

User Tracking


Aptean Ltd
Copyright © 2011-2026.

Contents

1 User Tracking.....1

1 User Tracking

This screen allows you to view all communications sent back by a driver from the *CALIDUS* ePOD/eServ mobile application.

 **Note:** If configured in the system, you may also be able to view communications back from TomTom WEBFLEET (or other external vehicle tracking systems).

If you have come to this screen from the menu, you are allowed to select data by:

- *Vehicle* - A drop-down list of all vehicles for the site.
- *User* - A drop-down list of all users for the site.
- *Date From* and *To* - providing a date pop-up for selection. If you are selecting *Device Messages* as the *Source*, the label will be *Device Date*. If you are selecting *Admin Actions*, the label will be *Audit Date*.
- *Load*.
- *Job*.
- *Source* - a drop-down list of "Device Messages" (the default, showing all messages from drivers using mobile devices) or "Admin Actions" (showing Admin user auditing).

Once you have entered the criteria, click **Search**. The screen will display a table of all the matching data. Any plain text boxes will match data that contains what you enter as the criterion.

Find

Vehicle: Select a Value User: Select a Value Device Date From: 24/02/2019 Device Date To: 18/04/2019

Load: Job: Source: Device Messages

Clear Search Create Excel Spreadsheet

User Audits

Select Columns

Records Per Page: 10


User	Vehicle	Load	Job	Job Type	Message Type	Content	GPS	Audit Date/Time	Device Date/Time
tw	YJ15 GXO				Logon	4.00.02.22	53.34910883,-2.85207444	29/03/2019 11:16	29/03/2019 11:16 Europe/London
tw	YJ15 GXO	JBGL03			Load Request		53.34910883,-2.85207444	29/03/2019 11:16	29/03/2019 11:16 Europe/London
tw	YJ15 GXO	JBGL03			Load Update		53.34910883,-2.85207444	29/03/2019 11:16	29/03/2019 11:16 Europe/London
tw	YJ15 GXO	JBGL03			Auto Update Request		53.34910883,-2.85207444	29/03/2019 11:17	29/03/2019 11:17 Europe/London
tw	YE08LJL				Logon	4.00.02.22	53.34910883,-2.85207444	29/03/2019 11:17	29/03/2019 11:17 Europe/London
tw	YE08LJL				Vehicle Check		53.34910883,-2.85207444	29/03/2019 11:17	29/03/2019 11:17 Europe/London
tw	YE08LJL	JBGL03			Load Request		53.34910883,-2.85207444	29/03/2019 11:17	29/03/2019 11:17 Europe/London
tw	YE08LJL	JBGL03			Load Update		53.34910883,-2.85207444	29/03/2019 11:18	29/03/2019 11:18 Europe/London
tw	YE08LJL	JBGL03			Auto Update Request		53.34909746,-2.85209089	29/03/2019 11:27	29/03/2019 11:27 Europe/London
tw	YB63 FOC				Logon	4.00.02.22	53.34909746,-2.85209089	29/03/2019 11:27	29/03/2019 11:27 Europe/London

1 2 3 4 5 ... >>

User Tracking Search Panel and Results table

Alternatively, if you click **Create Excel Spreadsheet**, the screen will export the audit data to a Microsoft Excel spreadsheet. The functionality differs per the browser you have used to access the Admin system, but the likely result is the spreadsheet file will be offered for download.

The results table will display a single line per audit message found.

 **Note:** If you have come to this screen from a link on another screen (for example, users, vehicles, loads), these filter options are not available - the screen will simply display the results as requested from the other screen, providing a **Back** button to return to the calling screen.

You can choose to hide or show almost all of the columns in the results table by using the **Select Columns** button on the header. The results table shows the following columns:

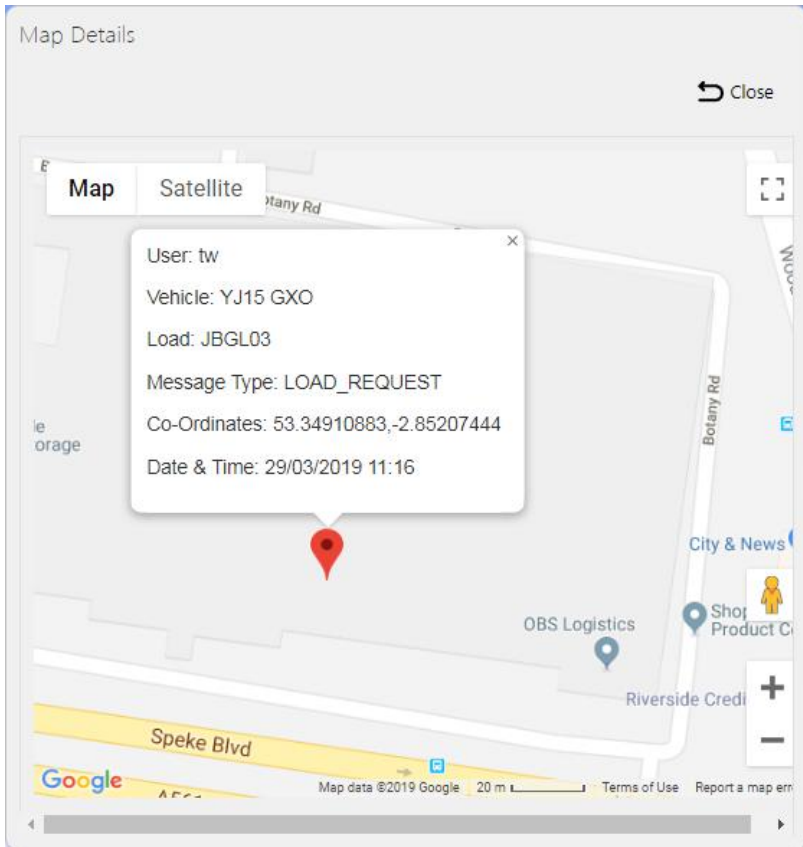
- *User* - the driver's user ID for the message.
- *Vehicle* - the driver's vehicle ID for the message.
- *Load* - the load ID to which the message pertains.
- *Job* - the job ID to which the message pertains.
- *Job Type* - the job type of the job to which the message pertains.
- *Message Type* - The activity being audited. The exact label shown here may be slightly changed from the below list, and are not not limited to:



- ◆ *Auto Update* - a message sent by the device periodically to check if there have been any changes to the load being processed.
- ◆ *GPS Status* - an optional message sent by the device periodically to capture the latest GPS co-ordinates.
- ◆ *Job Arrival* - a message to indicate that the user has arrived at a the address for a particular job.
- ◆ *Job Lock* - a message to indicate that the user is checking the job. Typically this indicates that the job is started, although there can be several Job Lock messages.
- ◆ *Job Submission* - a message to indicate that a job is submitted after completion. This message is used only when configured to do so.
- ◆ *Job Swap* - a message from the user requesting a swap of jobs with another user/load.
- ◆ *Job Update* - a message to indicate that the job is now complete or cancelled. This can update all aspects of a load, most importantly the completion date and time, the signatory, the signature and all container and product information.
- ◆ *Load Request* - a message sent only when requesting a load from the mobile device application when no load has yet been picked up. If a load has already been picked up, an Auto-Update Request is sent instead.
- ◆ *Load Update* - a message sent to request the load be updated. Typically this is used when starting, accepting or ending a load, and can update times, metrics, vehicle, trailer and status.
- ◆ *Logoff* - an optional message indicating that the driver has logged off the mobile device application.
- ◆ *Logon* - a message indicating that the user has logged on to the mobile device application.
- ◆ *Photo* - a message sent containing all the details of photos taken with a job. Typically there will be many of these messages, typically one per photo, typically sent at the same time as a Job Update message.
- ◆ *Vehicle Change* - a message indicating that the driver has changed vehicle.
- ◆ *Vehicle Check* - a message sent to update the system with details of a vehicle check performed. These messages are sent when the vehicle check is performed, which may be at log-on, completion of a load, when changing a vehicle during completion of a load, or after the specified duration of the check has expired.
- ◆ *Geofence Break* - a message sent to let the system know that this device has broken a geofence defined against a customer address.
- ◆ *WEBFLEET - End of Break*
- ◆ *WEBFLEET - Order Arrived*
- ◆ *WEBFLEET - Order Cancelled*
- ◆ *WEBFLEET - Order Complete*
- ◆ *WEBFLEET - Order Rejected*
- ◆ *WEBFLEET - Order Started*
- ◆ *WEBFLEET - Start of Break*
- *Content* - this differs per message type. For example, for a logon message, this shows the mobile device application version.
- *GPS* - the GPS co-ordinates from the mobile device when the message was generated. Note that the co-ordinates may not be populated if the device has not refreshed them within a few minutes, meaning that the co-ordinates shown here should be accurate.
- *Audit Date/Time* - the date/time that the system received and audited the action.
- *Device Date/Time* - the date/time that the device had when the message was sent, in the device's local time, with time zone.

If the message contains a GPS location, you can view the location by clicking the **Select** action button against that line in the table - a map pop-up will be shown.





Location Pop-up

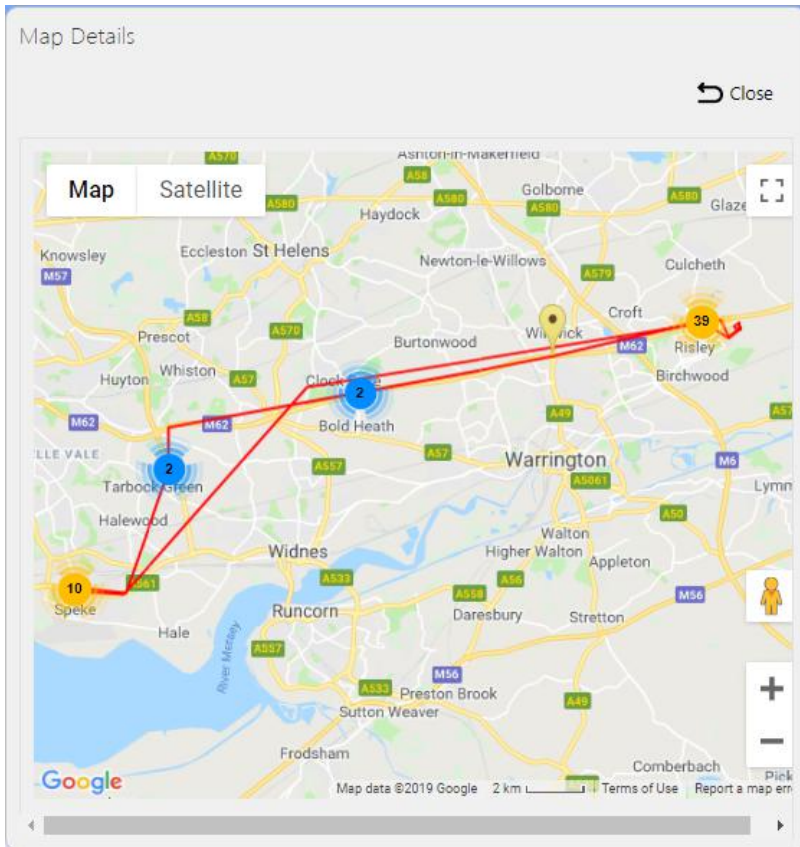
If you click the marker it will display some information about the message. You can close the marker with the "X" in the corner, and close the pop-up by clicking the **Close** button.

The screen may display a **Map** button on the header. This will happen if:

- you have come to this screen from a link on another screen, for example, when displaying tracking information for an entire load, job, vehicle or PDA user
- if you are searching for a specific load, job, user or vehicle.

You can click this to display all of the GPS-tagged locations as pointers on the map. These map points will indicate by colour and type what each pointer means. All points are connected by a line, to show linear progression.





Multiple Locations Pop-up

Icons indicate the type of task at this point:

- J - Job.
- L - Load.
- U - User.
- V - Vehicle.
- G - Geofence Break.
- Point - Map tracking point, not explicitly related to any of the above.
- * - Mixed types.



Note: Standard point markers can mix with other types and the point will retain its task type marker.

Colours indicate the progression of this task:

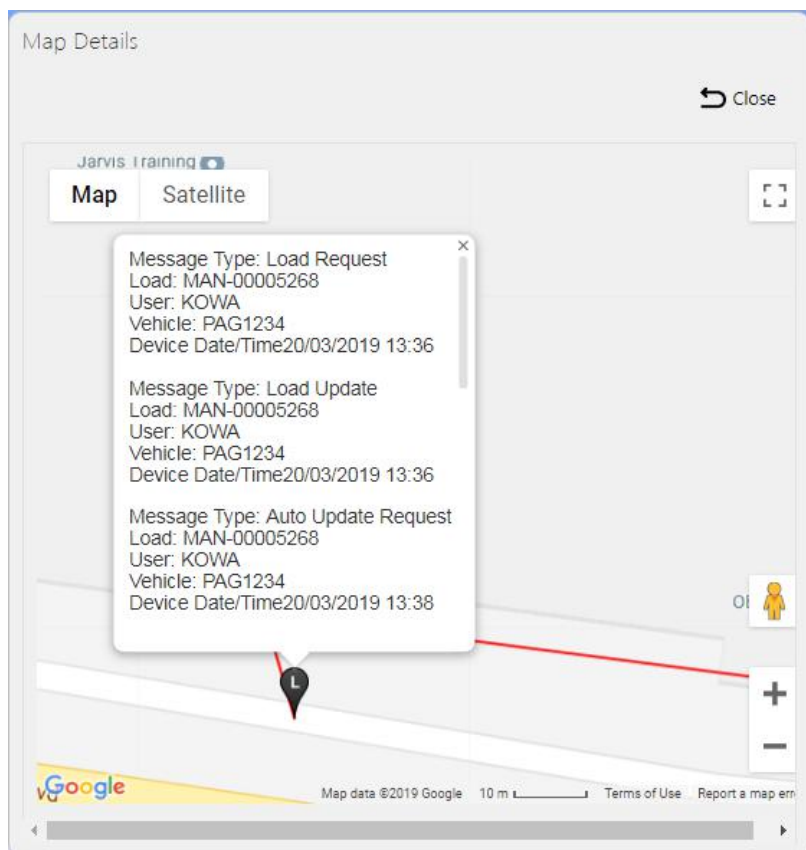
- Green - Start.
- Amber - Middle.
- Red - End.
- Black - mixed progression (for example if a task starts and ends at the same point).



Note: To keep the display clean, the map 'clusters' points together to display a hot-spot and the number of points in that spot. If you zoom in to the map, the map will start displaying the individual points.

If you click on a pointer you will see a popup of all of the details that have that GPS tag.





Multiple Locations Information

