

MCS Process Flows

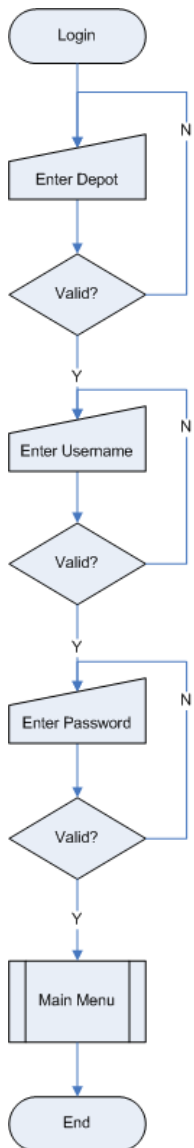
Aptean Ltd
Copyright © 2011-2026.

Contents

1 MCS Process Flows.....	1
1.1 Login.....	1
1.2 Menu.....	2
1.3 Receipt.....	3
1.4 Pallet Building.....	4
1.5 Despatch.....	5
1.6 Damages.....	7

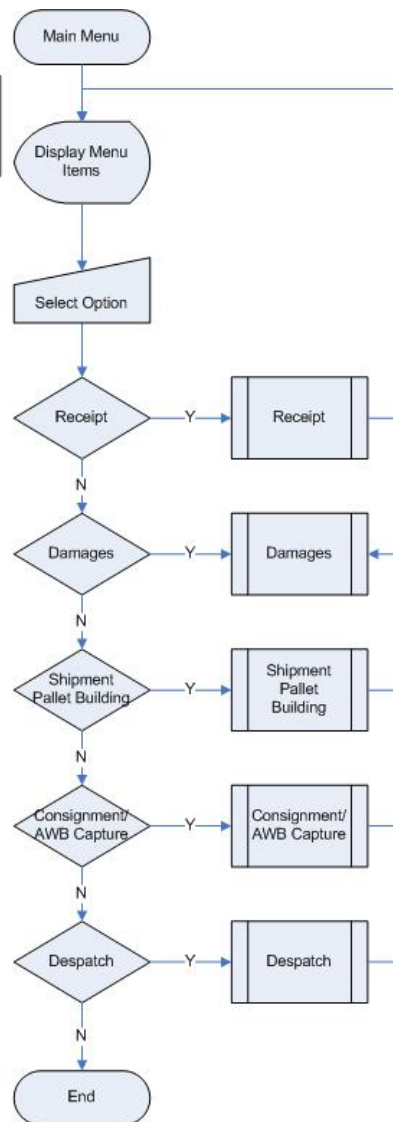
1 MCS Process Flows

1.1 Login

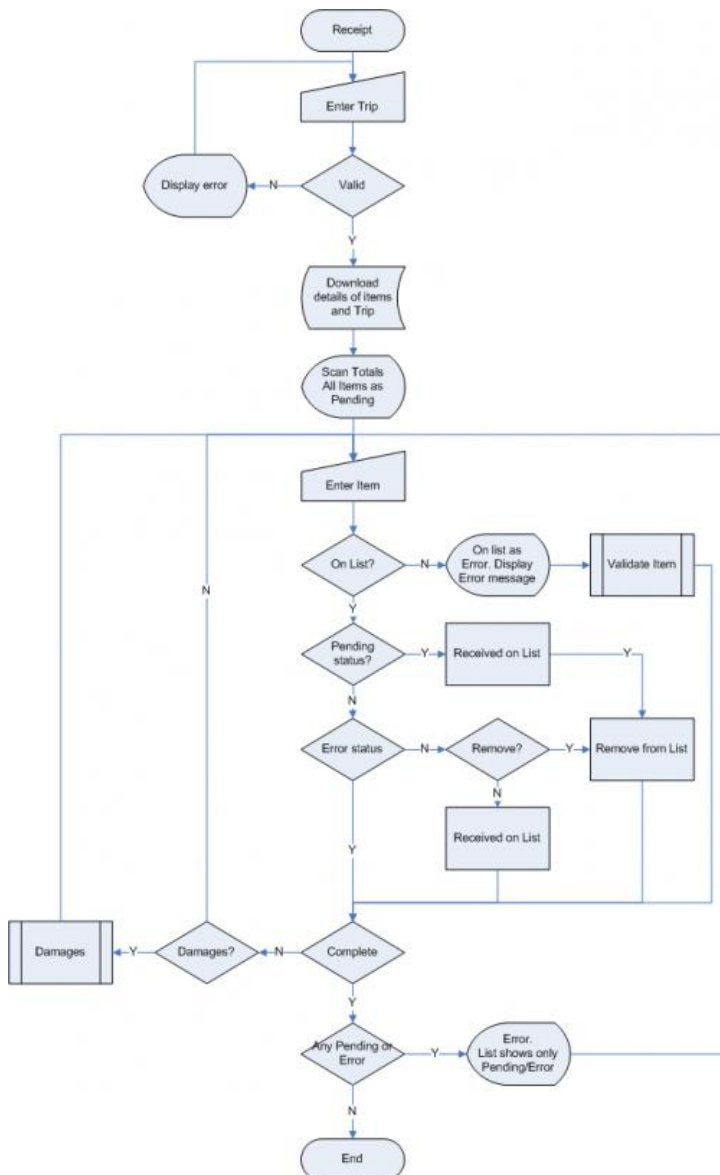


1.2 Menu

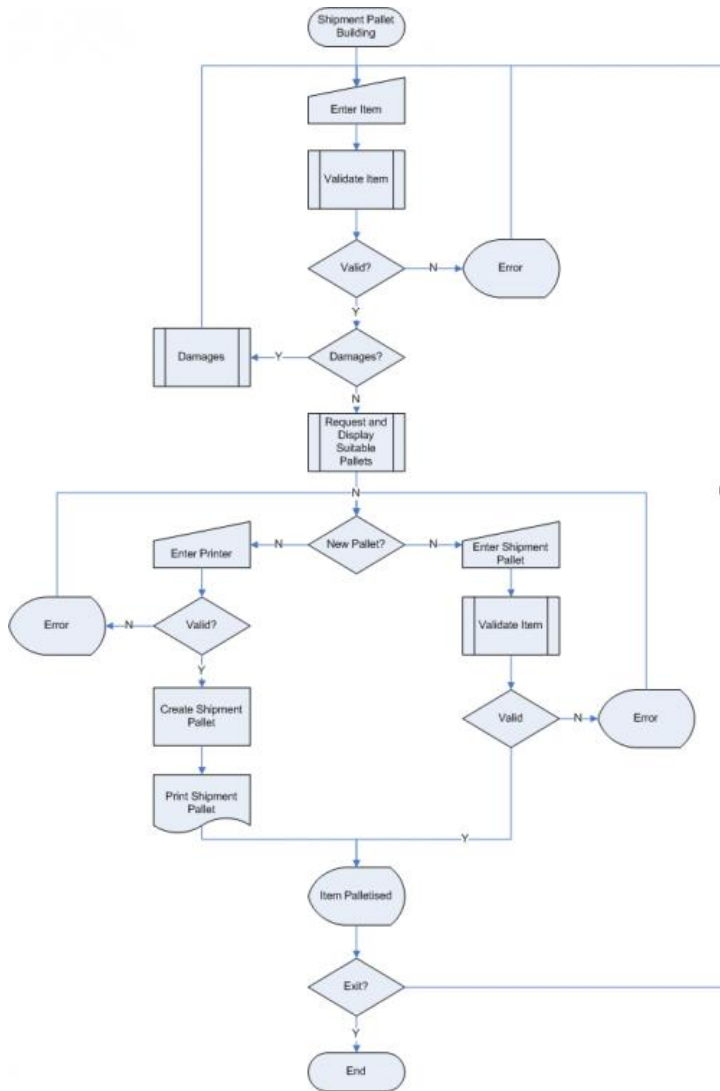
Other options available from the main menu:
* Error Log – List of errors returned by the server.
* Update Queue – List of pending messages to be sent
* Settings – Device configuration



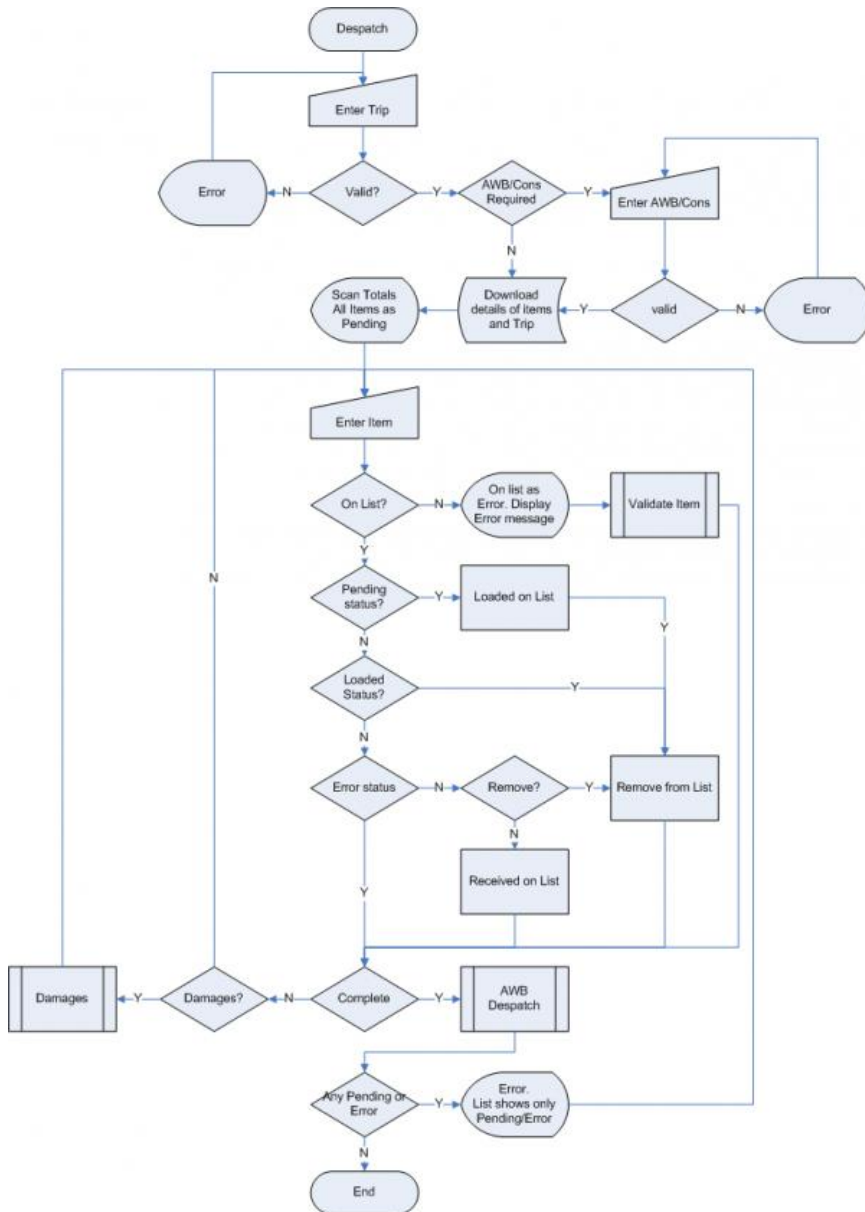
1.3 Receipt

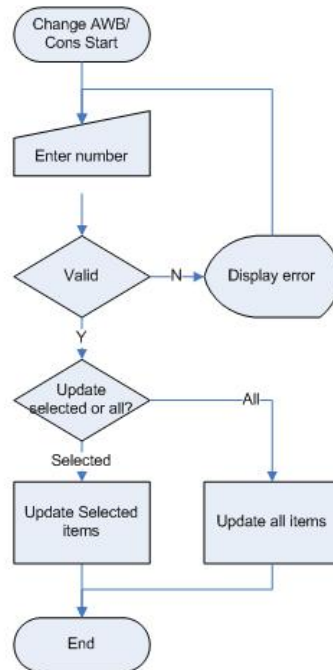
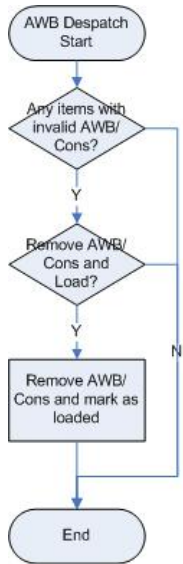


1.4 Pallet Building

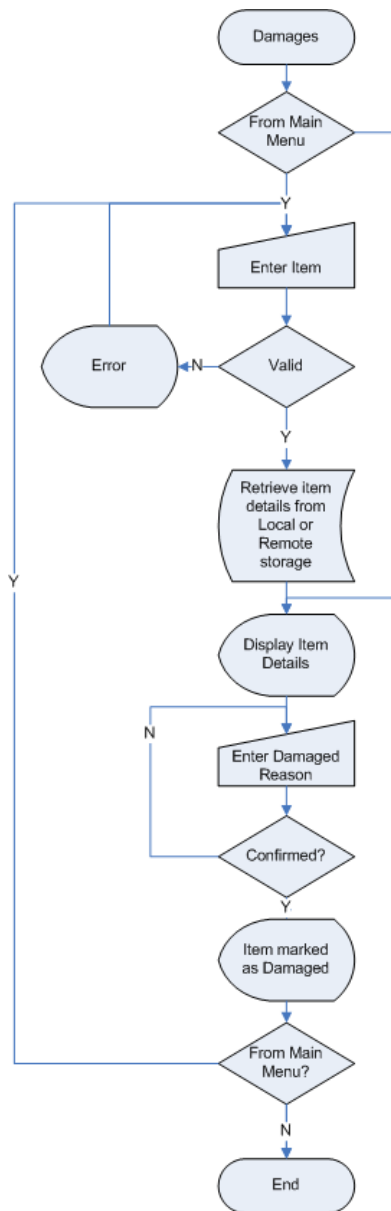


1.5 Despatch





1.6 Damages



The Damages screen can be called from the receipt or despatch process to process a single or multiple items, and from the main menu to process items one at a time.

When the damages process is called from receipt or despatch, the item will be marked as damaged and then processed by the calling screen. These are off-line processes. The device can be offline during this routine.

When the damages process is called from the main menu, the item is marked as damaged and updated in the database. This is in on-line process. If the device is off-line, the user will receive an error message.

