

Package Maintenance

Aptean Ltd
Copyright © 2011-2025.

Contents

1 Package Maintenance.....1

1 Package Maintenance

The package Maintenance screen contains a number of search parameters:

- Depot the package is based
- The schedule the package is on
- The package ID

Once you have entered your search parameters clicking 'Refresh' will load the details into the screen.

Package Maintenance

The details that can be viewed at the top section of the screen are:

Top Details

- Status (Status of the pallet Open/Closed)
- Decl Wgt (kg) - Declared weight of the pallet
- Act Wgt (kg) - The actual weight of the pallet
- Height, Length, Width - Dimensions of the pallet
- Label Printed - Tick box to show if a pallet label has been printed or not

The details in the bottom section of the screen contain:



Lower Details

- Pallet - Pallet the package is on
- Pallet Status - The pallet status
- Trip - Trip the package is on
- Depot

There are a number of buttons available on the package maintenance screen:

Buttons

Add to Pallet

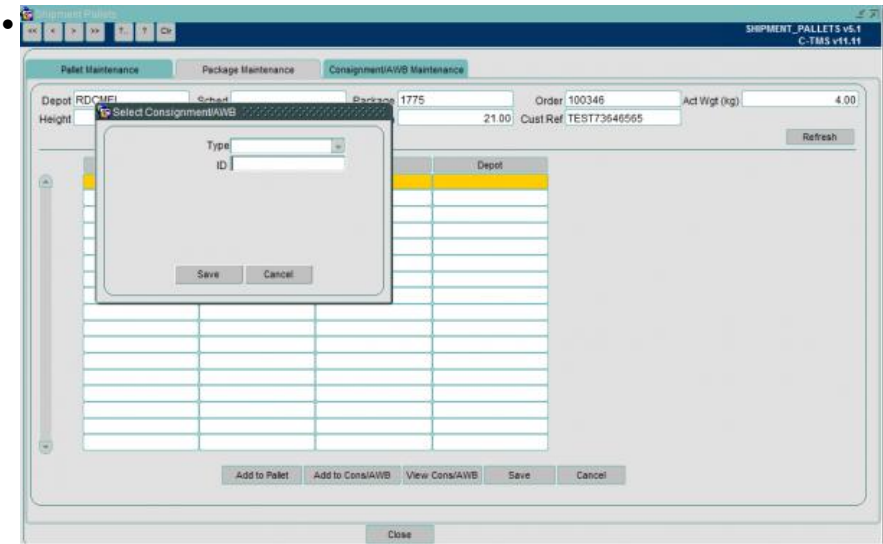
- Add to pallet opens a popup box that allows a pallet to be entered to add the package in the screen to be added to

Add to Pallet

Add to Cons/AWB

- Launches the popup screen to allow the package to be added to an Airway bill or consignment

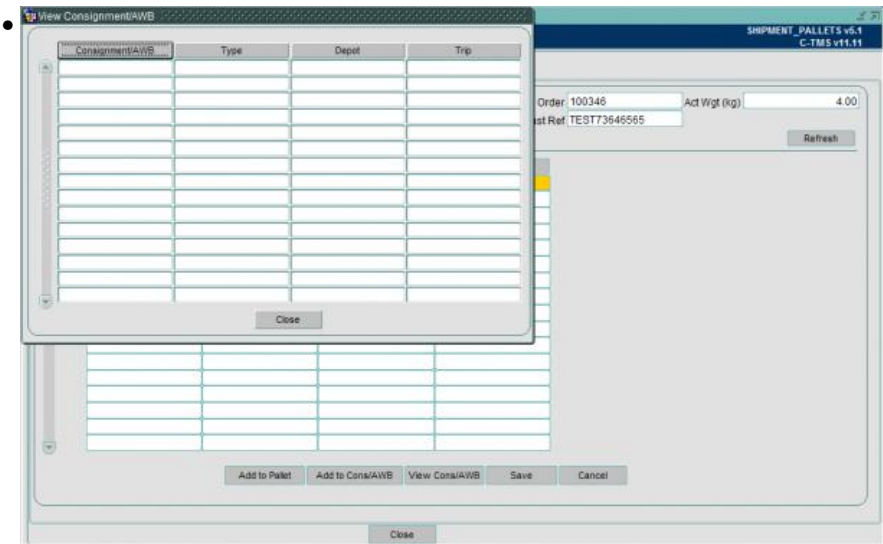




Add to Cons/AWB

View Cons/AWB

- Opens up a popup box to show the Consignment/AWB, Type, Depot and Trip the package is assigned



View Cons/AWBe

