

242102

Aptean Ltd
Copyright © 2011-2025.

Contents

- 1 242102.....1
 - 1.1 242102 (PA-72FJ2B)Upgrades to Waterfall Screen.....1
- 2 Functional Overview.....2
 - 2.1 Client Requirement.....2
 - 2.2 Solution.....2
- 3 Functional Description.....4
 - 3.1 References.....6
 - 3.2 Part of Release(s).....6

1 242102

1.1 242102 (PA-72FJ2B)Upgrades to Waterfall Screen

Copyright OBS Logistics © 2007

The information contained herein is the property of OBS Logistics and is supplied without liability for errors or omissions. No part may be reproduced or used except as authorised by contract or other written permission. The copyright and foregoing restriction on reproduction and use extend to all media in which the information may be embodied



2 Functional Overview

2.1 Client Requirement

Enlarge Form to fill Full Screen ViewChange Date selection Pull down Box to a 'Date Range' selection

- Added by NW: Retain the option to select a schedule but add the ability to select either Schedule OR Date Range.Delete 'Amend Trip' button on all 'Blocks.
- Added by NW: Also remove right click option "Amend Trip".Delete 'Delete Trip' button on 'Planned' and 'Accepted' Blocks.
- Added by NW: Also remove right click option "Delete Trip".Delete 'New Trip' Button from top of screen.
- Added by NW: Also remove right click option "New Trip".Delete 'Delete Trip', 'Amend Trip' and 'New Trip' from Right-Click drop-down box.Change 'Depot' Drop-down box to be List of RDC and Cross-Dock locations so that User visibility is bound by **MTS** User Access Control. Allow Visibility of all trips bound by 'Group name' i.e. include All carriers for Based at locations.Allow each Block to have a 'Configure Layout' option invoked by Right-Click - to allow re-configuring of visible fields within each block by user - to include 'Start Time', trip Id. Trip Stops, 1st Drop(Stop 2 Late Del Time), Driver, Tractor, Trailer ID, carrier, EFX Number, Trailer Type, Last trailer, POD (Tick Box), as minimum options. Include ability to resize fields to fit (as per Order Well 'Configure Layout' in Trip planning/Manipulation)Add 'Trailer ID', Driver and 'Tractor ID' to 'Search' box options and allow search on partial entry with % 'Wild Card' - not case sensitive.
- Added by NW - 02/05/07: The Access Control within this form will need to be the same as per the **TRIPSUM** and **TRIP_PLAN** forms regarding trip visibility and edit rights including tractor, trailer and driver allocation and drop down menus.
- Added by NW - 08/08/07: Re-label Trailer Field to be called Trailer ID.Amend "View Debrief" and "Debrief Driver" buttons from En-Route, Completed and Confirmed blocks to call the Trip Debrief form (**TRIPDTL**) and re-label buttons to be "Debrief".Amend "Search" to work in the same way as the "Find" button on the TRIPSUM form (and rename button to "Find").Link 'Allocate resources' button to **TRIP_RES** v1.4. (Amended)Previously mentioned "Right Click" options should be removed from all tabs (PLANNED, ACCEPTED etc), not just ALL.Amend dropdown fonts to be consistent with other forms i.e. **TRIPSUM**. Change DEBRIEFED/COMPLETED Block 'View Debrief' button to 'Go To POD' - link to **TRPDTL** v2.54(Include ability to Double Left Click to open highlighted Trip in **Trip Planning/Manipulation**)
- Added by NW 15/04/08: I suggest we exclude this option. Retain change of background colour of Start Time field if time is passed (as per current 'Preferences' option)

2.2 Solution

The screen size will be increased to maximise the viewing window. Also the screen will be changed to match the general appearance (Fonts, colours etc) of the other screens in **MTS**.

New fields will be added to the screen for selection. These will be for the date range. The current field for Schedule will remain so the user has the ability to pick either a schedule or a date range. The new fields will be alongside the current selection criteria at the top of the screen.

The ?Amend Trip? button will be removed from all blocks and all right click options on all Tabs.

The ?Delete Trip? button will be removed from the Planned and Accepted blocks, and also from the right click options.

The ?New Trip? button will be removed from the screen and also the right click options.

A new ?configure layouts? pop up window will be added. This will be accessible from the right click options. This window will allow the user to customise which fields are seen and also alter the size of the fields. The options on the window will be 'Start Time', trip Id. Trip Stops, 1st Drop(Stop 2 Late Del Time), Driver, Tractor, Trailer ID, carrier, EFX Number, Trailer Type, Last trailer, POD (Tick Box).

The labels for the "View Debrief" and "Debrief Driver" buttons on the En-Route, Completed and Confirmed, and Debriefed blocks will be changed to ?Debrief?. The functionality of these buttons will also change to call the Trip Debrief form (**TRIPDTL**). When the Trip debrief screen is called the current trip information will be passed as parameters and the relevant information displayed in the debrief screen.

The functionality of the ?Search? button will be changed to match the functionality of the ?Find? button on **Trip Manipulation**. New fields will be added to the drop down, these fields will be 'Trailer ID', Driver and 'Tractor ID'. The fields will not be case sensitive, and will allow a wildcard search using the %? symbol. The current find popup will be retained but will be altered to allow the same search options available in the trip manipulation screen.



The ?Allocate resources? on any tab or block will be linked to the [TRIP_RES](#) screen. When this screen is called the parameters for the current trip and schedule will be passed into the screen.

The access control for this screen will be changed to be in line with the other screens in [MTS](#). In particular the Depot drop-down will be a list of RDC and Cross-dock locations. This will allow the user visibility to be controlled by the [MTS](#) User Access control. Also the visibility of trips will be restricted based on the Group name. Finally the access control for edit and visibility will be changed to match the current control in the [Trip Manipulation](#) / planning screens.



3 Functional Description

The overall size of the screen will be increased to allow the extra fields to be added and also to maximise the space available to display the trips.

A number of fields will be added to the screen, and the general look will be changed to match the other screens in MTS. Firstly a date range will be added as selection criteria. This will be separate from the current schedule parameter and will allow the user to search on Schedule or date range. These new fields will be added alongside the current search criteria.

New Fields to be added.

The screenshot displays the 'Waterfall' application window titled 'TRIP_OVERVIEW v1.6 MTS v10.5.0'. The top bar includes a search field with '080605', a dropdown for 'All Depots', a count of '1', and buttons for 'Refresh', 'Auto Refresh Off', 'New Trip', 'Find Trip', 'Search', and 'Close'. The main content area is divided into five sections: 'PLANNED' (1 trip), 'ACCEPTED' (0 trips), 'EN-ROUTE' (0 trips), 'COMPLETED' (0 trips), and 'CONFIRMED' (0 trips). Each section contains a table with columns: Trip ID, Trip Stops, Trailer, Tractor, Driver, Start Time, and Finish Time. The 'PLANNED' section shows a trip with ID 'MAN-00455755' and stops '1. Thetford_DHL Thetford_IP24 1HB (SU)' and '2. Nottingh_DHL_NG10 1PR (CL)'. The 'ACCEPTED', 'EN-ROUTE', 'COMPLETED', and 'CONFIRMED' sections are currently empty. At the bottom, there are tabs for 'ALL', 'PLANNED', 'ACCEPTED', 'EN-ROUTE', 'COMPLETED', and 'CONFIRMED'.

The Amend Trip button will be removed from all blocks, tabs and right click options. The delete trip button will only be removed from the planned and accepted blocks and the corresponding right click options.

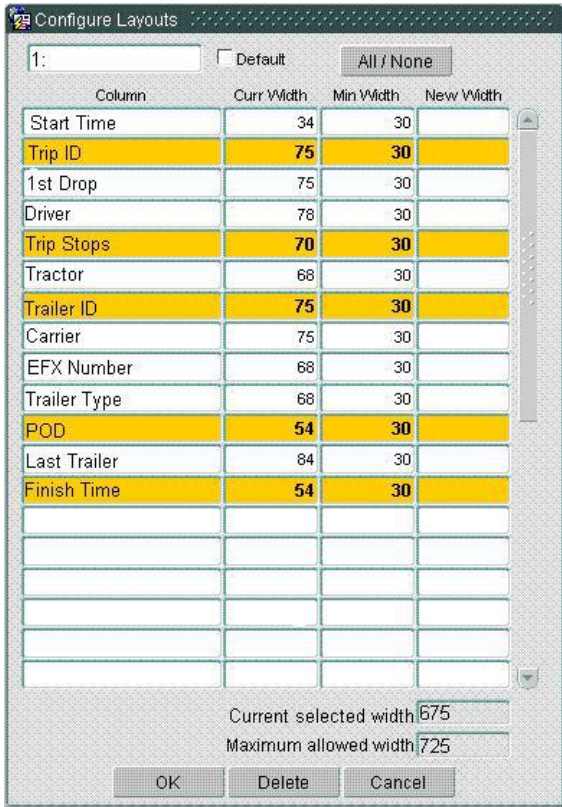
The ?New Trip? Button (highlighted above in blue) will be removed from the screen and will also be removed from the right click options.





The New trip and Amend Trip option will be removed completely. The Delete Trip button will be removed from the right click menu when accessed from the Planned and Accepted blocks.

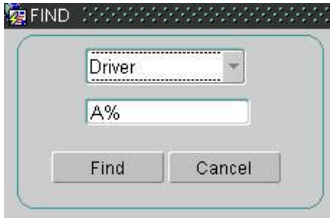
To allow the user to change the layout of the screen, a new pop up window will be created. This will be available via the right click options. The layout and functionality of this pop up will be similar to the popup used on the Trip Manipulation screen. The popup will allow the user to decide which fields are visible in the screen, and also to control the length of the fields.



The fields available for configuration will be 'Start Time', ?Trip Id?, ?Trip Stops?, ?1st Drop?,(Stop 2 Late Del Time), ?Driver?, ?Tractor?, ?Trailer ID?, ?Carrier?, ?EFX Number?, ?Trailer Type?, ?Last trailer?, ?POD? (Tick Box).

The ?Search? function will be amended to work in the same way as the ?Find? button on the Trip Manipulation screen. As part of this change new fields will be added to the drop down list in the Find pop up window.





The new fields available in the drop down will be ?Trailer ID?, ?Driver? and ?Tractor ID?. A wildcard entry will be allowed (using ?%?), and the search will not be case sensitive.

The View Debrief and Debrief Driver buttons on the En-route, completed and confirmed blocks will be renamed to ?Debrief?. The button will then be linked to the Trip debrief screen (**TRIPDTL**). The parameters used in the Waterfall screen will be passed to the Trip debrief screen and the corresponding information retrieved.

The ?Allocate Resources? button will be changed to call the **TRIP_RES** screen. The parameters used in the Waterfall screen will be passed to the Trip debrief screen and the corresponding information retrieved.

The access control for the screen will be changed to match the access control of other screens in the system. The Depot drop down box will be changed to be a list of RDC and cross dock locations so the user will only have visibility of locations that are relevant to them. The visibility of Trips will be restricted based on the Group Name. The ability to edit trips (including tractor, trailer, driver allocation and drop down menus) will be restricted.

3.1 References

Ref No	Document Title & ID	Version	Date
	Waterfall Screen.doc		
	Proposed Waterfall Screen.doc		
	EST-242102-PA-72FJB Waterfall Screen.doc		

3.1.1 Document History

Version	Date	Status	Reason	Initials
1a	18/07/08	Draft	Initial version	DNG
1	18/07/08	Issue	Review and Issue	JAT

3.1.2 Authorised By

Dave Meir	Development Manager
Suk Sandhu	TMSCC MTS Product Manager

3.2 Part of Release(s)

- **CONPRD Release - 9/12/2008**

