

278682

Aptean Ltd
Copyright © 2011-2026.

Contents

1 278682.....	1
2 278682 - AR-86YLA3/ Order Conf & Exceptions.....	2
3 FUNCTIONAL OVERVIEW.....	3
3.1 Client Requirement.....	3
3.2 Solution.....	3
3.3 Scope.....	4
3.4 Data.....	4
3.5 Pre-requisites.....	4
3.6 Menu Structure.....	4
3.7 Data.....	4
4 FUNCTIONAL DESCRIPTION.....	5
4.1 PROCESS FLOW.....	5
5 REFERENCES.....	6
6 DOCUMENT HISTORY.....	7
7 AUTHORISED BY.....	8

1 278682



2 278682 - AR-86YLA3/ Order Conf & Exceptions

Copyright OBS Logistics © 2010

The information contained herein is the property of OBS Logistics and is supplied without liability for errors or omissions. No part may be reproduced or used except as authorised by contract or other written permission. The copyright and foregoing restriction on reproduction and use extend to all media in which the information may be embodied



3 FUNCTIONAL OVERVIEW

3.1 Client Requirement

Allocate delivery units to orders and confirm from RDT scanning in marshal area of warehouse.

Exceptions process should orders not existing from Fixed Schedule

Label printing from WCS RDT application to mobile printer.

Closing loads and updating unused orders from fixed schedule.

3.2 Solution

C-TMS will create pre-advices of each of the planned trips to each of the destinations for each of the depots.

The RDT User will log on to the RF system, using the Depot Code, an assigned User ID and Password, and choose ?Order Creation? from the main menu. Potentially a login card with pre-printed barcodes for each field to be scanned when the user logs in will be used.

The user will scan or enter a printer ID that they will be using for this session.

The User will first scan the Cage ID or press F5 for loose item process. The user will then be prompted to enter a media type i.e. ?SCAGE?, ?LCAGE?, ?SMALL? ?MEDIUM? ?LARGE? ?GEARBOX? ?ENGINE?. If a valid media type is selected the user will then be prompted to scan or enter the destination id which is understood to be already labelled on the item. If no trip is planned or advised from the user?s Depot for that destination, on that day the RDT will display an error.

Once an item is scanned and confirmed, the RDT will print a consignment label to the user?s printer. This will include routing information for the item. Format TBC

The user will label the item with the consignment label.

C-TMS will be informed as each item is scanned to the destination, and the information from the item will be stored against the transport order. Regardless of the status of the trip on which the order is planned, the items will be added to the trip.

The RDT will request the user to continue to scan or enter items. To stop scanning items the user will press CLR/ESC or F10.

If a loose item is to be loaded, the user can press F5. This will generate a unique item ID and to be printed on the consignment label as a barcode.

The user will then be prompted to enter a media type i.e. ?SCAGE?, ?LCAGE?, ?SMALL? ?MEDIUM? ?LARGE? ?GEARBOX? ?ENGINE?. If a valid media type is selected the user will then be prompted to scan or enter the destination id which is understood to be already labelled on the item. If no trip is planned or advised from the user?s Depot for that destination, on that day the RDT will display an error.

The RDT will then print the consignment label for the item, and the user will label the item. The user will then place the label on the loose item and scan the label as confirmation that this has been completed.

If the item scanned (loose or cage) has already been scanned onto this trip before, the RDT will display this and ask whether the user wants to remove the item from the trip. The user will confirm with F1 or cancel using CLR.

Items will be added to the next available trip?s order(s) until the trip is set to ACCEPTED. Items will then be added to the subsequent trip?s order(s)



3.3 Scope

This change will be applied to system version 10.5

3.4 Data

3.5 Pre-requisites

None

3.6 Menu Structure

?Unchanged?

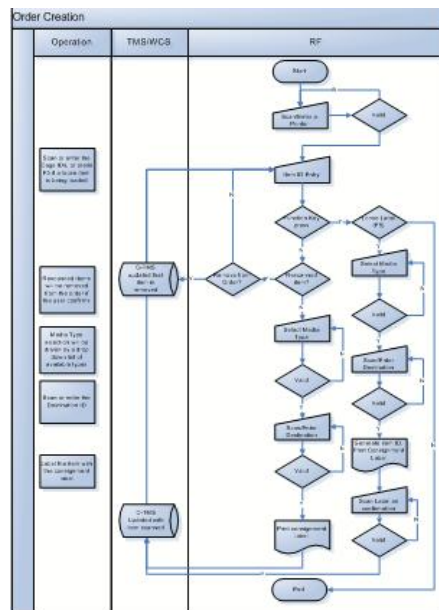
3.7 Data

N/A



4 FUNCTIONAL DESCRIPTION

4.1 PROCESS FLOW



5 REFERENCES

Ref No	Document Title & ID	Version	Date
1	EST- 278682 AR-86YLA3 Order Conf & Exceptions	1.0	09/07/10



6 DOCUMENT HISTORY

Version	Date	Status	Reason	Initials
0.1	22/07/10	Draft	Initial version	MJC
1.0	22/07/10	Issue	Reviewed and Issued	MJC
2.0	22/07/10	Re-Issue	Updated cost calculations	MJC
3.0	22/07/10	Re-Issue	Included costs associated with AR-86YLBG as both RIOs are included in this solution.	MJC



7 AUTHORISED BY

<i>Matt Crisford</i>	Development Manager
<i>Peter Greer</i>	TMSCC MTS Product Manager

