

278836 v1.0

Aptean Ltd
Copyright © 2011-2025.

Contents

1 278836.....1

 1.1 Client Requirement.....2

 1.2 Solution.....2

 1.3 Scope.....2

2 Set-up.....3

 2.1 Pre-requisites.....3

 2.2 Menu Structure.....3

 2.3 Data.....3

3 Functional Description.....4

4 AUTHORISED BY.....6

1 278836



DHL MTS

Add Additional Variable Field to Copy Contract

FUNCTIONAL SPECIFICATION - 10.6

06/01/2011 - 1.0

Reference: 278836 PA-86YC45



1.1 Client Requirement

When using the 'Copy Contract' function add an additional field to allow variable selection of 'Delivery Type' from standard drop-down box list as per Tariff list to replicate tariffs for alternative delivery type.

1.2 Solution

A new drop-down box that lists all the available delivery types will be added to the Copy Contract screen.

User will select alternative delivery type from drop-down box when replicating tariffs.

The screenshot shows a software interface for managing contracts. A 'Copy Contract' dialog box is open, allowing users to replicate contract details. The dialog includes fields for 'Cost Centre', 'Counter Party Name', 'Rate Type' (set to 'N/A'), 'Effective From', and 'Currency'. There is also a checkbox for 'Increment all charges by' and a 'Delivery Types' dropdown menu. The background window, titled 'CONTRACT v2.43 ALL', shows a form with fields for 'Cost Centre', 'Counter Party', 'Contract Type', 'Effective', 'Contract ID', and 'Currency', along with buttons for 'New Contract', 'Copy Contract', and 'Delivery Types'.

Delivery Type drop-down box will be added just after Rate Type.

1.3 Scope

This change will be applied to system version 10.6



2 Set-up

2.1 Pre-requisites

None

2.2 Menu Structure

?Unchanged?

2.3 Data



3 Functional Description

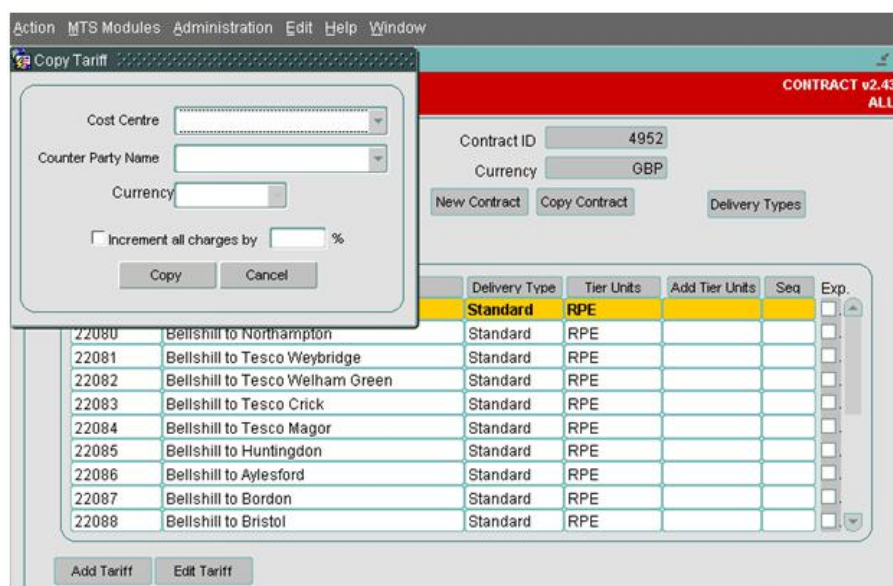
A new function will be created within the CNT package called Copy_Delivery_Tariff.. The function will be based on the existing Copy_Tariff function , with 2 additional parameters. From Delivery type and to delivery type.

Currently in the contract screen the user is able to select a tariff and right click to display a pop up menu including the option Copy Tariff. An additional menu item will be created called Copy Delivery Tariff.



Selecting the new menu item will launch a new pop up screen , called Copy Delivery Tariff Two new fields will be added to the Copy Delivery Tariff screen called From Delivery Type and To Delivery Type. The fields will be based on Lists, populated with the values currently available in the Delivery Type field on both the Order and Tariff screens.

The additional parameter will allow users to copy all the tariffs for a specific Delivery Type to another delivery type. The new pop up will be very similar to the existing Copy Tariff pop up (displayed below)



The user will select the menu item to display the pop up screen and enter values for the following fields:

Cost Centre (EXEL)

Counter Party (BIRDSEYE)

Currency (GBP)

From Delivery Type(STANDARD)

To Delivery Type(SAME DAY)

In the example above, the system will identify all tariffs for BIRDSEYE with a STANDARD delivery type. A cursor will loop



through the tariffs, copying all related records and changing the delivery type to SAME DAY in the new records.

Only one contract can exist between a Cost Centre and counter party, to have multiple delivery types we must use copy tariff rather than copy contract.

The existing Copy Tariff functionality and pop up screen will not be amended.

Table Updates Required

Not applicable

Document History

Version	Date	Status	Reason	Initials
0.1	22/10/10	Draft	Initial version	SEW
1.0	25/10/10	Issue	Reviewed & Issued	MJC



4 AUTHORISED BY

<i>Matt Crisford</i>	Development Manager
<i>Peter Greer</i>	TMSCC MTS Product Manager

