

294635 v1.0

Aptean Ltd
Copyright © 2011-2026.

Contents

1 294635.....1

2 FUNCTIONAL OVERVIEW.....3

 2.1 Client Requirement.....3

 2.2 Solution.....3

 2.3 Scope.....3

 2.4 Pre-Requisites.....3

 2.5 Data.....3

 2.6 Implementation Advice.....3

3 FUNCTIONAL DESCRIPTION.....4

 3.1 'ORD_TEMPLATE_EDIT_UPDATE' System Parameter.....4

 3.2 Order Template Screen.....4

 3.3 OMS Package.....8

4 REFERENCES.....9

5 DOCUMENT HISTORY.....10

6 AUTHORISED BY.....11

1 294635



DHL C-TMS

Template Modifications

FUNCTIONAL SPECIFICATION - 10.7

12/01/12 - 1.0

Reference: FS 294635 NW-8P9PHN





2 FUNCTIONAL OVERVIEW

2.1 Client Requirement

Modify the ?Order Templates? in C-TMS to allow the customer reference (external reference) and delivery point reference to be entered at the point of generation, this should also allow multiple orders, each with a different customer reference, delivery point reference and DU quantity/weight to be generated from a single template.

2.2 Solution

The ?Order Templates? screen will be modified to enable the user to specify a booking, customer and delivery point reference for all, or each, of the transport orders generated for the batch template; or separately for a single transport order created for the template itself.

The user will also have the opportunity to alter the DU quantity and weight for each transport order generated for the batch template (i.e. via the ?Generate? button) or for the template itself (i.e. via the ?Create Order? button).

The new functionality will be applicable based on a new system parameter.

2.3 Scope

2.4 Pre-Requisites

The new system parameter ?ORD_TEMPLATE_EDIT_UPDATE? has been created.

2.5 Data

The new system parameter ?ORD_TEMPLATE_EDIT_UPDATE? has been set to ?Y? for the ?HCRPRD? database.

2.6 Implementation Advice

The new system parameter ?ORD_TEMPLATE_EDIT_UPDATE? should be created and set prior to the new programs being released.



3 FUNCTIONAL DESCRIPTION

3.1 'ORD_TEMPLATE_EDIT_UPDATE' System Parameter

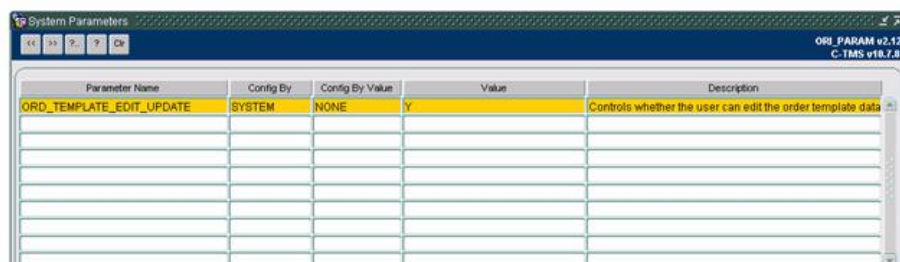
The new functionality will be applicable based on a new system parameter called ?ORD_TEMPLATE_EDIT_UPDATE?.

The description of the new system parameter will be:

?Controls whether the user can edit the order template data during generation (Y/N).?

The new system parameter will be set to ?Y? should the new functionality be required for the database; if the new system parameter does not exist, or is not set to ?Y?, then the existing functionality will apply.

For example:



Parameter Name	Config By	Config By Value	Value	Description
ORD_TEMPLATE_EDIT_UPDATE	SYSTEM	NONE	Y	Controls whether the user can edit the order template data

3.2 Order Template Screen

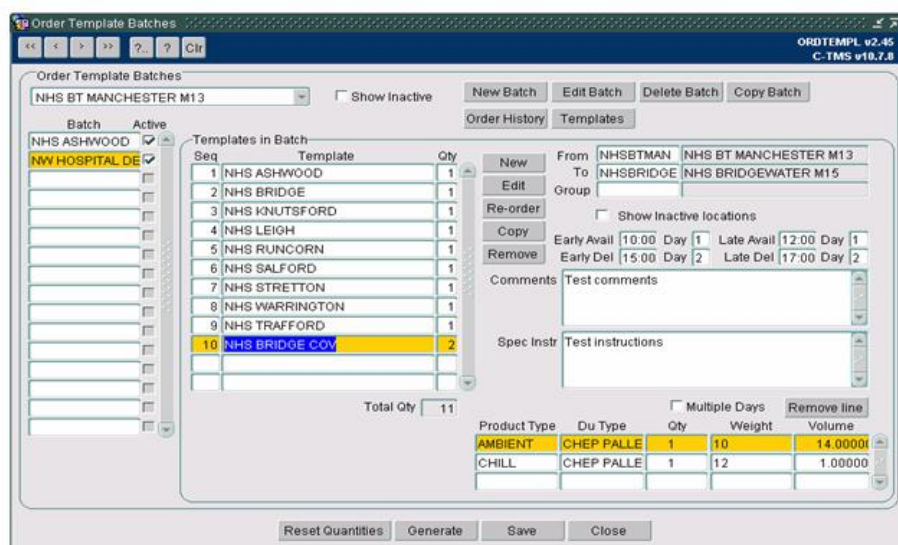
The ?Order Templates? screen (i.e. ?ORDTEMPL? form) will be modified to enable the user to specify a booking, customer and delivery point reference for all, or each, of the transport orders generated for the batch template.

N.B. The current method for a single transport order created for the template itself allows the user to enter the ?Booking Ref?, ?Customer Ref? and ?Del Point Ref? fields in the ?Order Details? screen when the new transport order has been generated.

The user will also have the opportunity to alter the DU quantity, weight and volume for each transport order generated for the templates in the batch (i.e. via the ?Generate? button) or for the template itself (i.e. via the ?Create Order? button).

The new functionality will be applicable based on the new system parameter ?ORD_TEMPLATE_EDIT_UPDATE? being set to ?Y?.

An example of an order template may be seen below:



Order Template Batches

Order Template Batches: NHS BT MANCHESTER M13

Batch: NHS ASHWOOD

Active: ☒ Show Inactive: ☐

Buttons: New Batch, Edit Batch, Delete Batch, Copy Batch

Order History: Templates

Templates in Batch:

Seq	Template	Qty
1	NHS ASHWOOD	1
2	NHS BRIDGE	1
3	NHS KNUTSFORD	1
4	NHS LEIGH	1
5	NHS RUNCORN	1
6	NHS SALFORD	1
7	NHS STRETTON	1
8	NHS WARRINGTON	1
9	NHS TRAFFORD	1
10	NHS BRIDGE COV	2

Total Qty: 11

From: NHSBTMAN NHS BT MANCHESTER M13

To: NHSBRIDGE NHS BRIDGEWATER M15

Group: ☐ Show Inactive locations

Buttons: New, Edit, Re-order, Copy, Remove

Early Avail: 10:00 Day 1 Late Avail: 12:00 Day 1

Early Del: 15:00 Day 2 Late Del: 17:00 Day 2

Comments: Test comments

Spec Instr: Test instructions

Multiple Days: ☐ Remove line

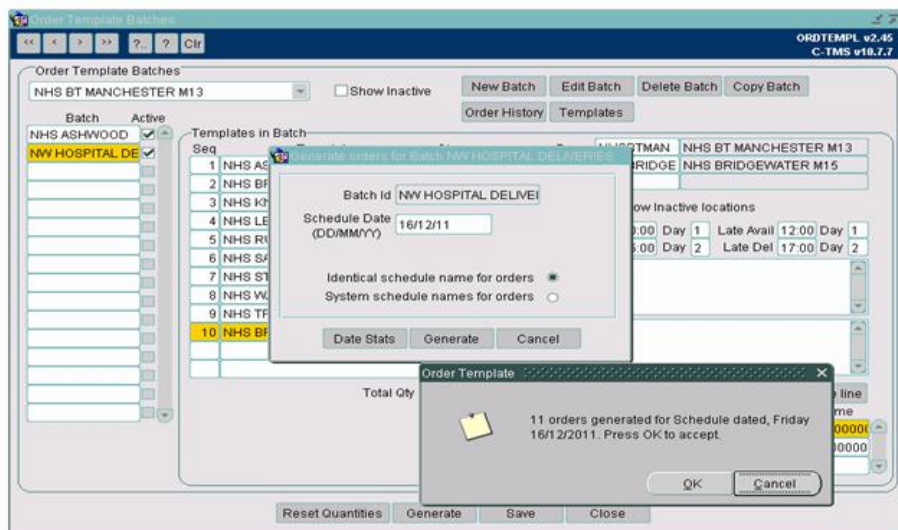
Product Type	Du Type	Qty	Weight	Volume
AMBIENT	CHEP PALLE	1	10	14.0000
CHILL	CHEP PALLE	1	12	1.00000

Buttons: Reset Quantities, Generate, Save, Close

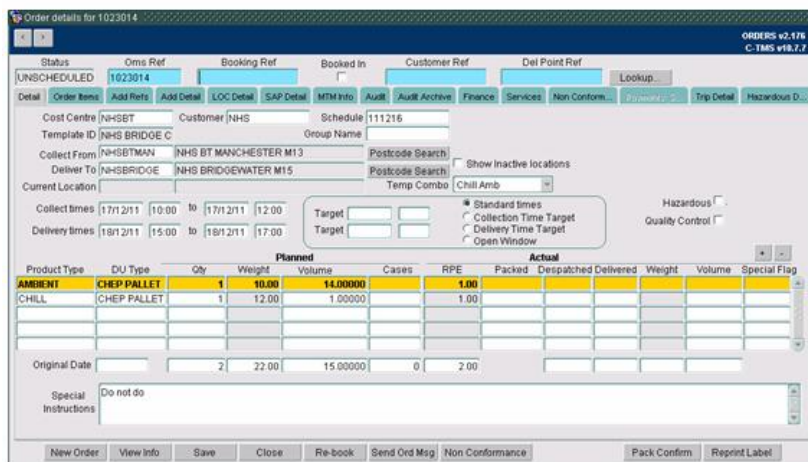
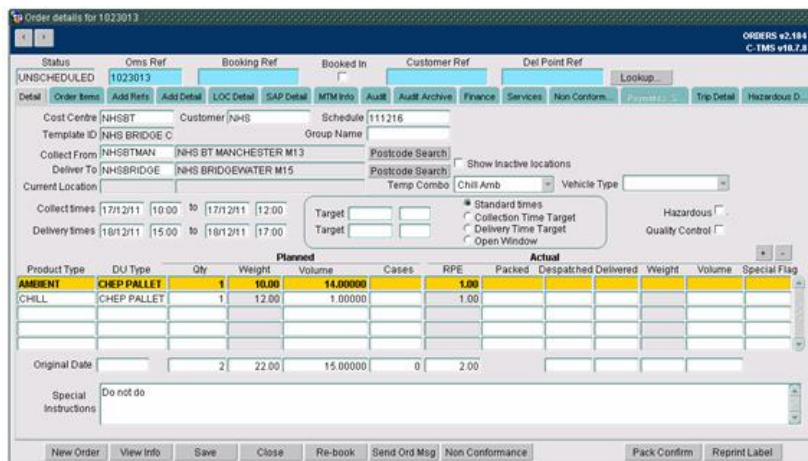


3.2.1 Generate

The order template can be used to create transport orders via the ?Generate? button (if the ?Multiple Days? box is ticked then the user can specify the number of successive days to generate the transport orders in an extra ?Days to Generate? field):



The two transport orders will have been created from the order template:



3.2.2 Create Order

The order template can also be used to create a transport order via the ?Create Order? button in the screen that is



displayed via the ?Templates? button:

Order Templates										
Template Id	Cost Centre	Customer	ECT	EDT	From Location	To Location	Group	Last Used	Del Type	First Batch
NHS TRAFFORD COV	NHSBT	NHS	10.00	15.00	NHSBTM NHS BT MANCHE	NHSBRID NHS BRIDGEWATE		15-12-2011	Standard	NW HOSP1
NHS TRAFFORD COV	NHSBT	NHS	08.00	11.30	NHSBTM NHS BT MANCHE	NHS TRAF NHS TRAFFORD M		15-12-2011	Standard	NW HOSP1
NHS WARRINGTON	NHSBT	NHS	08.00	09.30	NHSBTM NHS BT MANCHE	NHS HARN NHS HARRINGTON		15-12-2011	Standard	NW HOSP1
NHS WREKTON	NHSBT	NHS	08.00	10.00	NHSBTM NHS BT MANCHE	NHS SPP NHS SPIRE WAT		15-12-2011	Standard	NW HOSP1
NHS SALFORD	NHSBT	NHS	08.00	10.00	NHSBTM NHS BT MANCHE	NHS SALF NHS SALFORD MB		15-12-2011	Standard	NW HOSP1
NHS RUNCORN	NHSBT	NHS	08.00	09.30	NHSBTM NHS BT MANCHE	NHS RUNC NHS RUNC	NHS Log	15-12-2011	Standard	NW HOSP1
NHS LEIGH	NHSBT	NHS	08.00	11.00	NHSBTM NHS BT MANCHE	NHS LEIGH NHS LEIGH WAT		15-12-2011	Standard	NW HOSP1
NHS KNUTSFORD	NHSBT	NHS	08.00	11.00	NHSBTM NHS BT MANCHE	NHS KNUT NHS KNUTSFORD		15-12-2011	Standard	NW HOSP1
NHS BRIDGE	NHSBT	NHS	07.30	09.00	NHSBTM NHS BT MANCHE	NHS BRID NHS BRIDGEWATE		15-12-2011	Standard	NW HOSP1
NHS ASHWOOD	NHSBT	NHS	08.00	09.00	NHSBTM NHS BT MANCHE	NHS ASHW NHS ASHWOOD W		15-12-2011	Standard	NHS ASHW
NHS MAIDS COV		00.01	00.01	00.01	CHL COVE CHL Coventry Crat	NHS MAI Maidston, NHS Log		05-10-2007	OTHER DEI	
NHS ALFERT COV		00.01	00.01	00.01	CHL COVE CHL Coventry Crat	NHS ALF Alfreton, NHS Alfreto		04-10-2007	OTHER DEI	
NHS NORMA COV		00.01	00.01	00.01	CHL COVE CHL Coventry Crat	NHS NOR Normanto, NHS Lc		04-10-2007	OTHER DEI	
NHS RUNC COV		00.01	00.01	00.01	CHL COVE CHL Coventry Crat	NHS RUNC NHS RUNC	NHS Log	02-10-2007	OTHER DEI	
NHS BRIDE COV		00.01	00.01	00.01	CHL COVE CHL Coventry Crat	NHS BRID Bridgwat, NHS Log		01-10-2007	OTHER DEI	
NHS BURY ST COV		00.01	00.01	00.01	CHL COVE CHL Coventry Crat	NHS BUR Bury St, NHS Logist		05-10-2007	OTHER DEI	
NHS BURYST COV		00.01	00.01	00.01	EXELBAN Banbury, Banbury D	NHS BUR Bury St, NHS Logist			Other Deliv	
NHS RUNC BAN		00.01	00.01	00.01	EXELBAN Banbury, Banbury D	NHS RUNC NHS RUNC	NHS Log		Other Deliv	
NHS NORM BAN		00.01	00.01	00.01	EXELBAN Banbury, Banbury D	NHS NOR Normanto, NHS Lc			Other Deliv	
NHS MAID BAN		00.01	00.01	00.01	EXELBAN Banbury, Banbury D	NHS MAID Maidston, NHS Log			Other Deliv	

The single transport order will have been created from the order template:

[illegible]

The functionality for the ?Create Order? button will not be changed because the user is able to modify the order references and DU data once the transport order is created.

3.2.3 Modifications

When the user presses the ?Generate? button a popup screen is displayed, for example:

Generate orders for Batch NW HOSPITAL DELIVERIES

Batch Id NW HOSPITAL DELIVE

Schedule Date (DD/MM/YY) 12/01/12

Days to Generate 2

Identical schedule name for orders ☒

System schedule names for orders ☐

Date Stats Generate Cancel

This popup screen will be changed so that the user will be able to enter order references and specify that the transport order may be edited once created.

If the new system parameter ?ORD_TEMPLATE_EDIT_UPDATE? is set to ?Y? then the popup screen will display extra fields to ask the user whether the order template data will be changed during processing, for example:



The popup screen will include the following questions with tick boxes:

- ?Do you want to edit the transport order data during processing??
- ?Use the following references for all orders??

If the box is ticked then the item will have a value of ?Y? and when not ticked the item will have a value of ?N?.

The popup screen will also include the following fields for the order references:

- ?Booking Ref?
- ?Customer Ref?
- ?Del Point Ref?

The new tick boxes and order references will be stored in the ?GENERATE_ORDERS? data block.

If the ?Do you want to edit the transport order data during processing?? box is ticked then the ?Order details for X? screen will be displayed once the transport order has been created and the user will be able to edit the order data (i.e. the order references and DU data). The functionality for the ?Generate? button will then be similar to the ?Create Order? button.

If the ?Use the following references for all orders?? box is ticked then the same order references entered will be used for all of the transport orders that may be created.

N.B. No validation will be performed to ensure that an order reference has been entered should the user tick the ?Use the following references for all orders?? box. If an order reference of any type is entered then the transport order will be created with that order reference.

If the ?Use the following references for all orders?? box has not been ticked then the user will have to maintain the order references for each transport order that are created for the order template.

In summary:

Functionality Required	Do you want ...?	Use the ...?	References
Same references for all orders on the templates in the batch.	N/Y	Y	Y
Different references for all orders on the templates in the batch.	Y	N	N
Ability to modify the DU data.	Y	N/Y	N/Y

The processing will be changed to pass the order references to the ?OMS.CREATE_BATCH_ORDERS? function if the ?Use the following references for all orders?? box is ticked; if the box is not ticked then the order references will be passed as null values.

The order references will also be passed as null values to the ?OMS.CREATE_ORDER_FROM_TEMPLATE? function when transport orders are created via the ?Create Order? button: this is because the order references will be passed between the functions in the ?OMS? package as described in section 3.3.

If the ?Do you want to edit the transport order data during processing?? box is ticked then the internal ?F_EDIT_ORDER? function will be used to allow the user to edit the transport order after it has been created.



3.3 OMS Package

The ?OMS? package for the transport order processing will be modified to use the extra data that may be entered by the user in the ?Order Template? screen.

The new functionality will be applicable if the extra data has been provided by the call from the ?Order Template? screen, therefore the new system parameter ?ORD_TEMPLATE_EDIT_UPDATE? will not need to be checked within the package because it must be set to ?Y? for the extra data to be provided.

The ?CREATE_BATCH_ORDERS? function will be changed to receive the three extra parameters for the order references.

The ?CREATE_ORDER_FROM_TEMPLATE? function will also be changed to receive the three extra parameters for the order references.

The ?CREATE_ORDER_FROM_TEMPLATE? function will use the three extra parameters to update all of the transport orders created from the template with the order references provided.

The order references will be stored on the ?SCH_ORD? database table as follows:

Reference	Database Item
Booking Ref	BOOKING_REF
Customer Ref	EXTERNAL_REF
DelPointRef	DEL_POINT_REF



4 REFERENCES

Ref No	Document Title & ID	Version	Date
1	EST-294635 NW-8P9PHN Template Modifications v1.0.doc	1.0	16/12/11



5 DOCUMENT HISTORY

Version	Date	Status	Reason	Initials
0.1	11/01/12	Draft	Initial version	PDR
1.0	12/01/12	Issue	Reviewed and Issued	MJC



6 AUTHORISED BY

<i>Matt Crisford</i>	Development Manager
<i>Peter Greer</i>	TMSCC MTS Product Manager

