



Aptean

# Administration - Reports

Calidus TMS - 12.48

29th April 2025 - 2.0  
Reference: ADMINISTRATION

# Contents

- 1 Reports.....1
  - 1.1 Report Selection.....1
  - 1.2 Parameter Selection.....1
  - 1.3 Report Output.....2
  - 1.4 Available Reports.....3
- 2 Reports List.....8

# 1 Reports

C-TMS Reports provides the users with reports that are required for day to day operations, finance and management reporting.

C-TMS Reports can be accessed from the C-TMS Modules menu.

## 1.1 Report Selection

Once you click on the Reports option, the form as shown below will be displayed.

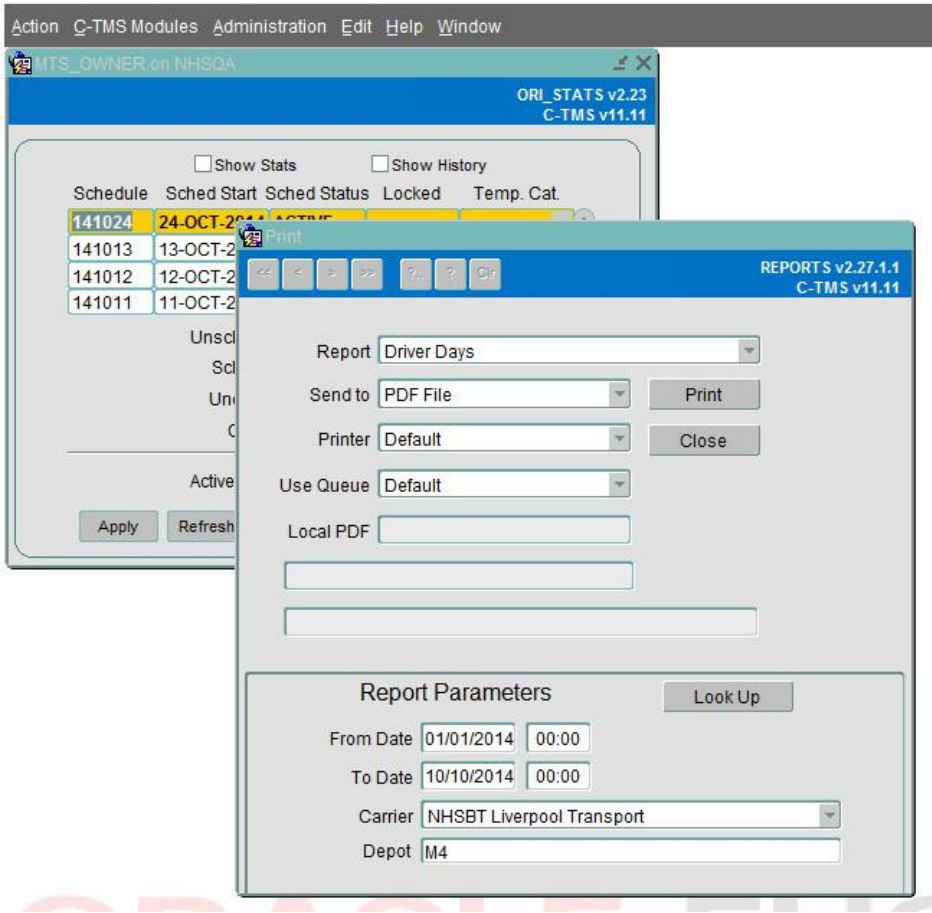
Select the required report from the Report drop down field. Based on the report that you are selecting a list of parameters for generating the report will be displayed as shown below.

## 1.2 Parameter Selection

In this example, we will look at generating the Driver Run Sheet Report. Once the Driver Run Sheet option is selected, the list of parameters for generating the driver sheet will be prompted as shown below. Based on the report that you are



selecting the report parameters will vary.



Enter the From Date, To Date, Carrier and the Depot details as specific selection criteria to narrow down the data selection for the reported information.

Where the selection is from a validated list of master data either a dropdown is available or the **Look Up** button can be used.

**Note:** If wide ranging parameter selections are chosen then this could take some time to generate the output, firstly to select all the necessary records and secondly to transfer the report file to your web browser.

### 1.3 Report Output

To generate the report click the **Print** button and this will open a detached new browser window with a specific report URL which will display the report output.



Date: 10/10/14

Time: 09:39

Page: 1 of 40

Driver Days

From Date 01/01/14 00:00

To Date 10/10/14 00:00

Trip ID

Status

Depot Liverpool Blood Centre

Carrier LIV\_TRSPT

TRIP\_ITINERARY v2.6

C-TMS v11.11

16/09/14 07:45									
RTE-00000518		Stop	Location	Arrive (Act)	Depart (Act)	Trailer Type	Trailer	RPE Weight	Vol
<div>Trip 140916 RTE-00000518</div> <div>BOL</div> <div>Status PLANNED</div> <div>Driver</div> <div>Carrier LIV_TRSPT</div> <div>Cost</div>		1 SU	Liverpool Blood Cent	07:45	08:15	BI			
		2 DL	Halton General	08:30	09:00	BI			
		3 DL	Whiston	09:05	09:35	BI			
		4 DL	Broadgreen	09:35	10:05	BI			
		5 DL	Alder Hey/Royal Live	09:55	10:25	BI			
		6 DL	Fazakerley / Uni Mos	10:30	11:00	BI			
		7 DL	Southport Hospital	11:30	12:00	BI			
		8 DL	Ormskirk & District	12:40	13:10	BI			
		9 CL	Warrington District	14:15	14:45	BI			
16/09/14 07:45									
RTE-00000369		Stop	Location	Arrive (Act)	Depart (Act)	Trailer Type	Trailer	RPE Weight	Vol
<div>Trip 140916 RTE-00000369</div> <div>BOL</div> <div>Status PLANNED</div> <div>Driver</div> <div>Carrier LIV_TRSPT</div> <div>Cost</div>		1 SU	Liverpool Blood Cent	07:45	08:15	BI			
		2 DL	Halton General	08:30	09:00	BI			
		3 DL	Whiston	09:05	09:35	BI			
		4 DL	Broadgreen	09:35	10:05	BI			
		5 DL	Alder Hey/Royal Live	09:55	10:25	BI			
		6 DL	Fazakerley / Uni Mos	10:30	11:00	BI			
		7 DL	Southport Hospital	11:30	12:00	BI			
		8 DL	Ormskirk & District	12:40	13:10	BI			
		9 CL	Warrington District	14:15	14:45	BI			
16/09/14 07:45									
RTE-00000667		Stop	Location	Arrive (Act)	Depart (Act)	Trailer Type	Trailer	RPE Weight	Vol
<div>Trip 140916 RTE-00000667</div> <div>BOL</div> <div>Status PLANNED</div> <div>Driver</div> <div>Carrier LIV_TRSPT</div> <div>Cost</div>		1 SU	Liverpool Blood Cent	07:45	08:15	BI			
		2 DL	Halton General	08:30	09:00	BI			
		3 DL	Whiston	09:05	09:35	BI			
		4 DL	Broadgreen	09:35	10:05	BI			
		5 DL	Alder Hey/Royal Live	09:55	10:25	BI			
		6 DL	Fazakerley / Uni Mos	10:30	11:00	BI			
		7 DL	Southport Hospital	11:30	12:00	BI			
		8 DL	Ormskirk & District	12:40	13:10	BI			
		9 CL	Warrington District	14:15	14:45	BI			

Note: All C-TMS Reports produced by Oracle Reports are in PDF (this is different functionality than the C-TMS Export which is in CSV format).

### 1.3.1 Send to

Reports can be created and accessed in a number of ways by send to: printer; preview; pdf file; file; and browser.

- 'Printer' option prints the report directly to a default or specified printer.
- 'Preview' option displays the report in a previewer window, from where it can be viewed and printed.
- 'PDF' option creates the report as a pdf file on the user's machine, where it can be viewed in the adobe acrobat reader application.
- 'File' option creates a print file.
- 'Browser' option produces a view of the report when accessing C-TMS via a web-browser.

#### 1.3.1.1 Printer


This allows the choice of a particular printer connected either on the C-TMS network, or, a default printer. The default printer is usually the default printer set up on the user's machine.

#### 1.3.1.2 Local PDF

This is used to define a path where the pdf file is to be created on the user's machine.

## 1.4 Available Reports

A variety of reports are available in the C-TMS system, and bespoke reports are developed when required by the business.

 **Note:** User access to particular reports is controlled by the Administration section of C-TMS and is maintained by administrator users of the system. See the [Administration](#) section for further information.

The main reports available in the system at present are described below:



Report	Description
Abnormal Product Volumes	The information for this report is collated from the Product Item file form, provided by uploaded product data from clients' third-party systems. Parameters to be supplied are: Minimum volume and maximum volume, both in cubic metres, and the number of days for the report to cover, working back from the present day. This report is typically used if a problem with the DU's arises, i.e. case sizes.
Abnormal Product Weights	The information for this is collated from the Product Item file, provided by uploaded product data from clients' third-party systems. Parameters to be supplied are: Minimum and maximum weight, both in kilograms, and the number of days for the report to cover, working back from the present day. This report is typically used if a problem with the DU's arises, i.e. case sizes.
Adjusted Invoice	This report is called from the Invoices form. It produces an Adjusted Invoice for those customers using Provisional Invoicing  Advance Orders This report is used by the planner to check what advances are in the system. Data can be displayed for all or a given schedule.
Backhaul Schedule	This provides a view of all collections and back-hauls, and is used to check what is planned against the supplier's requirements.  The data is displayed for a user-supplied depot.
Breach Driving Regulations	This prints the total driving time and the total trip time for all carriers/trips that have breached
Collections Deviation Distance	This report display trip details for depot and collection location.
Collections Excess Distance	This report prints trip details for those trips which have exceeded the specified distance for depot specified.
Customer Invoice	This report is called from the Invoices form, and produces invoices for the specified customer
Daily KPI by Schedule	This report displays various KPI information, such as no of Orders on a schedule , No of trips on a schedule, No of on-time deliveries on a schedule, etc
Driver Days	This report enables transport departments to monitor trips and changes to trips for a given time period. It provides information about the current status of trips, the drivers assigned to the trip and the volumes being transported. The parameters required are date range, depot and carrier.
Driver Itineraries	This report is used by the sites. It outlines the trips leaving from a site, the times, their destinations and the load in RPEs for each trip. The required parameters are date range and depot.
Early/Late Deliveries (MTM)	This shows all the early and late deliveries and shows order id, trip numbers, destination of orders, the type of produce, quantity and unloads start time. The parameters that can restrict the results for this report are as follows:  Product type, Before/After time, Schedule, Depot, Arrive Time.
Excess Waiting Time	This report display trips which have a waiting time greater than that specified for a specified carrier



Report	Description
Grid Closure	This report shows what products have been picked out side of Grid Closure (POR) The parameters used to restrict the results for this report are as follows: Schedule, Depot, Product type, Grid Closure Time.
Haulier Confirmation	This report displays carrier information along with trip details
Haulier Performance	This report display the performance of each haulier for a specific period of time
Inbound Schedule	This report shows all the trips scheduled to arrive at depots. The parameters used to restrict the results for this report are:  From and to dates, Trip Status, Depot
KPI by Lane	This report displays various KPI's for a specified period of time
KPI Summary	The report allows planners to analyse the quality of the plan against the KPI's to be achieved. The results are restricted by choice of schedule.
Loading Schedule	This report is typically used by a planning centre, and sites and is used quite frequently (2-3 times daily). It displays the state of the plan, and any updated changes made to trips on the plan. The parameters used to restrict the results for this report are as follows: Date range, Carrier, Inclusion of order number( yes/no), Depot, Date the information has changed since.
Location Delivery Pre-Warning	This report has been renamed to Location Pre-Warning
Location Pre-Warning	This report shows the Collection and/or Delivery activities for a given Depot. The parameters used to restrict the results for this report are as follows: Date Range, Trip Status: ALL or Accepted, Load Type: Collected, Delivered or Both, Depot: the list of locations available to the user is determined by whether the operation is using the Lane Based Order mechanism and whether the user is assigned the LBO_TRACKING user parameter. In this case, the list of locations will be based on which lanes the user is authorised to see. If the Lane Based mechanism is not being used by the operation, then the list of depots will be a combination of the Based-at user parameter and the locations set up by the Customer/Customer Group mechanism.
Multi Drops Excess Distance	This shows the trips in <b>C-TMS</b> for a chosen depot where the distance between 2 deliveries at Customer/Store locations is greater than a specified parameter. The results are restricted further by a date range.
Multiple Deliveries	This shows locations and order details where multiple deliveries are to be made for a particular date range. The parameters used to restrict the results for this report are as follows: Date range, Maximum time.
Non-Slot Deliveries	This shows all the deliveries to be delivered outside of a locations slot. The parameters used to restrict the results for this report are as follows: Schedule, Depot.
Order Variance Qty by Product	This report shows all the orders that have a variance against them, where the <b>Create TI's</b> process from <b>Bookings</b> Information has created the orders. The parameters used to restrict the results for this report are as follows: Schedule, Source location, Destination Location, <b>Product Type</b> , Minimum DU variance.
Order Variance Qty	This report shows the same as Order Variance Qty by Product but groups the result by store.



Report	Description
by Store	
Order Variance Qty by Trip	This report shows the same as Order Variance Qty by Product but shows the result by trip.
Pending Supplier Invoices	This report displays the pending supplier invoices, with total amount of all invoices, for a user-supplied date range
Plan Exceptions	<p>This report displays several sections of planning exceptions:</p> <ul style="list-style-type: none"> <li>• Non Slot Deliveries</li> <li>• Advance Breaches</li> <li>• Short Trips</li> <li>• Missing Trailer Types</li> <li>• Light Trips</li> <li>• Over Laden Trips</li> <li>• Missed Collection Windows</li> <li>• Incompatible Temperature Combinations</li> </ul>
Excessive Deviation Mileage	The report allows the planners to analyse and decide if changes to the schedule are required.. The parameters used to restrict the results for this report are as follows: Schedule, Maximum deviation miles, Light trip minimum RPEs, Over laden Trip Tol., Short trip minimum number of miles
Slot Usage	<p>The report displays which slots that have been used in the creation of Transport Instructions, and the RPEs being transported for that particular slot for a particular period of time. The parameters used to restrict the results for this report are as follows:</p> <p>Date range, Slot Usage( all or advances), Depot</p>
Slot Variance	The report displays all new slots that have been created in <b>C-TMS</b> since the last VAST file upload, or created manually in the system. The parameter used to restrict the results is Slot variance with a choice of ?manual? or ?new?.
Store Cage Collections	The report displays all the trips for stores and the associated RPE quantity of cages returned to an RDC with the query restricted by the number of stops on a trip that return to RDCs as a percentage of the overall trip. The parameters used to restrict the results for this report are as follows: Date range, RDC Return less percentage.
The Driver Sheet	The report displays the trip deliveries for a particular day for a chosen driver. This outlines the driver's day. The parameters used to restrict the results for this report are as follows: Date range, Depot, Trip Id.
The Front Desk Sheet	<p>This report shows all the departures from a particular depot and includes information such as destination of orders, driver, trailer type and total distance. The parameters used to restrict the results for this report are as follows: Date range,</p> <p>Depot.</p>
Trailer Shunting	This report is typically used by sites to track the shunting of the trailers. The parameters used to restrict the results for this report are as follows: Date range, Depot.
Trip Summary	This report provides summary information about trips for a specified time period such as start and departure times, total mileage of each trip, first





Report	Description
	collection and first delivery locations, carrier, and early and late delivery times.
Unplanned Quantity	<p>This report shows the underplanned and overplanned quantities of types goods, e.g. Perishable, Frozen etc. for each depot for a particular Schedule. The parameters used to restrict the results for this report are as follows: Schedule date, Show Store Detail,</p> <p>Depot, Underplanned RPEs, Overplanned RPEs.</p>

A full list of all reports is in section [Reports List](#).



## 2 Reports List

This page shows all reports and their filenames, which are required is scheduling reports through [EDI Maintenance](#).

You can click on the report name to be taken to the report details, listed here: [Reports Details](#).

Name	Filename
<a href="#">10.6 Booked Orders</a>	BOOKED_ORDERS.rep
<a href="#">10.6 Collection Note</a>	COLL_NOTE.rep
<a href="#">10.6 Daily Collections</a>	DAILY_COLLECTIONS.rep
<a href="#">10.6 Despatch Report By Carrier</a>	DESPATCH_BY_CARRIER.rep
<a href="#">10.6 Despatch Report By Start Time</a>	DESPATCH_BY_STARTTIME.rep
<a href="#">10.6 Drivers Run Sheet</a>	RUN_SHEET_DSG.rep
<a href="#">10.6 Drivers Run Sheet UKS</a>	RUN_SHEET_UKS.rep
<a href="#">10.6 Failed Locations Report</a>	FAILED_LOCATIONS.rep
<a href="#">10.6 Front Desk Sheet</a>	FRONT_DESK_SHEET.rep
<a href="#">10.6 Front Desk Sheet DSG</a>	FRONT_DESK_SHEET_DSG.rep
<a href="#">10.6 Haulier Confirmation</a>	HAULIER_CONFIRMATION.rep
<a href="#">10.6 Haulier Trip Sheet</a>	HAULIER_TRIP_SHEET.rep
<a href="#">10.6 Load Manifest</a>	LOAD_MANIFEST.rep
<a href="#">10.6 Load Planning</a>	LOAD_PLAN.rep
<a href="#">10.6 Loading Schedule</a>	LOADING_SCHED.rep
<a href="#">10.6 Loading Schedule Summary</a>	LOADING_SCHED_SUMM.rep
<a href="#">10.6 Missing Load Ref Report</a>	MISSING_LOAD_REF.rep
<a href="#">10.6 Pick Control Sheet</a>	PICK_CONTROL_SHEET.rep
<a href="#">10.6 Store Delivery Note</a>	STORE_DEL_NOTE_UKS.rep
<a href="#">10.6 Sub-Contractor Summary Sheet</a>	SUB_CONTRACT_SUMM.rep
<a href="#">10.6 Traffic Sheet</a>	TRAFFIC_SHEET.rep
<a href="#">10.6 Trailer Tracking</a>	TRAILER_TRACKING.rep
<a href="#">10.6 Trip Sheet</a>	TRIP_SHEET.rep
<a href="#">10.6 Trip Sheet Barcode</a>	TRIP_SHEET_BARCODE.rep
<a href="#">10.6 Trip Stops</a>	TRIP_STOP.rep
<a href="#">10.6 Trip Stops DSG</a>	TRIP_STOP_DSG.rep
<a href="#">10.6 Trip Stops UKS</a>	TRIP_STOP_UKS.rep
<a href="#">10.6 Unbooked Orders</a>	UNBOOKED_ORDERS.rep
<a href="#">10.6 Unscheduled Orders</a>	UNSCHEDULED_ORDERS.rep
<a href="#">10.6 Warehouse Loading Sheet</a>	WAREHOUSE_LOADING_SHEET_UKS.rep
<a href="#">AA Delivery Status Report External</a>	AA_DEL_STAT
<a href="#">AA Delivery Status Report Internal</a>	AA_DEL_STAT
<a href="#">AA Trip Sheet</a>	AA_TRIP_SHEET.rep
<a href="#">Abnormal Product Volumes</a>	ABNORMAL_PRODUCT_VOLUMES.rep
<a href="#">Abnormal Product Weights</a>	ABNORMAL_PRODUCT_WEIGHTS.rep
<a href="#">Adjusted Invoice</a>	INVOICE_ADJUST1.rep
<a href="#">Advance Orders</a>	ADVANCE_ORDERS.rep
<a href="#">Asset Inventory</a>	ASSET_INVENTORY.rep
<a href="#">BG Load Manifest</a>	BG_LOAD_MANIFEST.rep
<a href="#">BG HC Trip Sheet</a>	BG_HC_TRIP_SHEET.rep
<a href="#">BG Loading Schedule Summary</a>	BG_LOADING_SCHED_SUMM.rep
<a href="#">BG Trip Sheet</a>	BG_TRIP_SHEET.rep
<a href="#">BNL Delivery Report</a>	BNL_DELIVERY.rep
<a href="#">Backhaul Schedule</a>	BACKHAUL_SCHEDULE.rep
<a href="#">Bathstore Return To Base</a>	BATHSTORE_RET_TO_BASE.rep
<a href="#">Bathstore Trip Sheet/Manifest</a>	BATHSTORE_MANIFEST.rep
<a href="#">Baxter Delivery Note</a>	RIGEL_DELIVERY_NOTE.rep
<a href="#">Baxter Load Summary Report</a>	RIGEL_LOAD_SUMMARY_REPORT.rep



Baxter Loading Schedule	RIGEL_BAX_LD_SCHED.rep
Breach Driving Regulations	DRIVING_REGS_BREACH.rep
British Gas Waste Manifest	BGW_MANF.rep
Buf Loading Schedule	BUF_LOADING_SCHEDULE.rep
CMR	CMR.rep
CMR BNL Report	CMR_NL.rep
CMR BNL Report1	CMR_BNL.rep
CN Load Manifest for Consol Centres	LOAD_MANIFEST_XDOCK.rep
CN Order Status	ORDER_STATUS.rep
CN Trip Sheet	TRIP_SHEET.rep
CN Warehouse Loading Report	WAREHOUSE_LOADING_REPORT.rep
Carrier Invoice	INVOICE_CARR.rep
Carrier Manifest (DHL Express)	CARRIER_MANIFEST_DHLEXP
Carrier Manifest (Movianto)	CARRIER_MANIFEST_MOV
Carrier Manifest (Standard1)	CARRIER_MANIFEST_STD1.rep
Carrier Manifest (Standard2)	CARRIER_MANIFEST_STD2.rep
Carrier Manifest (UKMail)	CARRIER_MANIFEST_UKMAIL.rep
Carrier Manifest (Yodel)	CARRIER_MANIFEST_YODEL
Carrier Work Confirmation	CARRIER_WORK.rep
Collections Deviation Distance	COLLECTIONS_DEVIATION_DISTANCE.rep
Collections Excess Distance	COLLECTIONS_EXCESS_DISTANCE.rep
Combined Documents BNL	COMBINED_DOCUMENTS_BNL.rep
Control Tower Traffic Plan	tripSheet
Countries	COUNTRIES.rep
Customer Delivery Note	AKW_DELIVERY_NOTE.rep
Customer Dunelm	INVOICE_CUST_DUN.rep
Customer Invoice	INVOICE_CUST1.rep
DG TEST	DNG_TEST.rep
Daily KPI by Schedule	KPI_SCHED.rep
Daily Store ASN	DAILY_STORE_ASN.rep
Delivery Docs	DELIVERY_DOCS.rep
Delivery Note HCR	DELIVERY_NOTE_HCR.rep
Distribution	DISTRIBUTION.rep
Dng Test	UNSCHED_ORDERS.rep
Dom Manifest	DOM_MANIFEST_POD.rep
Domestic Order Confirmation	DOM_ORD_CONF.rep
Driver Days	TRIP_ITINERARY.rep
Driver Itineraries	DRIVER_ITINERARIES.rep
Driver Manifest	DRVR_MAN.rep
Driver Run Sheet	driverRunSheet
Dunelm Coll Manifest Recon	DUNELM_COLL_MANF_RECON
Dunelm Collection Arrivals	DUNELM_COLLECTION_ARRIVALS
Dunelm Daily Store	DUNELM_DAILY_STORE_ASN.rep
Dunelm PO Reconciliation	DUNELM_PO_RECON
Dunelm Unloading Variance	DUNELM_UNLOAD_VARIANCE
Dunelm Vehicle Despatch	DUNELM_VEHICLE_DESPATCH
EMAIL_NOTIFICATION	EMAIL_NOTIFICATION.rep
Early/Late Deliveries	EARLY_OR_LATE_DELIVERIES.rep
Early/Late Deliveries (MTM)	MTM_EARLY_OR_LATE_DELIVERIES.rep
Excess Waiting Time	EXCESS_WAITING_TIME.rep
Generic Portal Label	PORTAL_LABEL.rep
Grid Closure	GRID_CLOSURE.rep
HC Booking In Form	HC_BOOKING_IN_FORM.rep
HC Haulier Trip Sheet	HC_HAULIER_TRIP_SHEET.rep



HC Load Summary Report	Load_Summary_Report.rep
HC Loading Schedule	HC_LOADING_SCHEDULE.rep
HC Marshalling Exception Report	HC_MARSHALLING_EXCEPTION.rep
HC Shunt Sheet	HC_SHUNT_SHEET.rep
HC Trip Sheet	HC_TRIP_SHEET.rep
HC Van Delivery Note	HCR_VAN_DELIVERY_NOTE.rep
HCR Delivery Note	HCR_DELIVERY_NOTE.rep
HCR Loading Sheet	HCR_LOADING_SHEET.rep
Haulier Confirmation	HAULIER_CONFIRM_FAX.rep
Haulier Invoice	HAULIER_INVOICE.rep
Haulier Performance	HAULIER_PERFORMANCE.rep
ISC Road Ops Trip Control Form	ROAD_OPS_TRIP_CTRL_FRM.rep
Inbound Schedule	INBOUND_SCHEDULE.rep
Incomplete Volumetric	INCOMPLETE_VOLUMETRIC.rep
Item Labels (DOM)	ITEM_LABELS_DOM.rep
Item Labels by Schedule (DOM)	ITEM_LABELS_DOM_SCHED.rep
JP Dummy	MS_RDC_INTAKE.rep
Job Details	Job_Details.rep
KPI By Lane	KPI_BY_LANE.rep
KPI Summary	KPI_A.rep
LFS Despatch Note	LFS_DESPATCH_NOTE.rep
LFS Label	LFS_LABEL.rep
LFS Label Multi	LFS_LABEL_MULTI.rep
LFS Label Sched	LFS_LABEL_SCHED.rep
LFS Pallet Label	LFS_PALLET_LABEL.rep
LFS Trip Sheet POD POC	LFS_TRIP_SHEET_POD_POC.rep
Loading List	LOADING_LIST.rep
Loading Schedule	LOADING_SCHEDULE.rep
Location Pre-Warning	LOC_DEL_PRE_WARNING.rep
Low Vehicle Fill	LOW_VEHICLE_FILL.rep
MDD Code 03 Exception Report	MDD_CODE03_EXCEPTION.rep
MS RDC Intake Report	MS_RDC_INTAKE.rep
MS Slot Utilisation	MS_SLOT_UTIL.rep
Moran Trip Sheet	TRIP_SHEET_MORAN.rep
Multi Drops Excess Distance	MULTI_DROPS_EXCESS_DISTANCE.rep
Multiple Deliveries	MULTIPLE_DELIVERIES.rep
NHSBT Manifest	NHSBT_MANIFEST.rep
NR Driver Manifest	NR_DRIVER_MAN.rep
NR Order Conf	NR_ORD_CONF.rep
NR Supplier Manifest	NR_SUPP_MANF.rep
Non Slot Deliveries	NON_SLOT_DELIVERIES.rep
Non-Slot Deliveries (MTM)	MTM_NON_SLOT_DELIVERIES.rep
Openfield Drivers Manifest	OPENFIELD_DRVR_MAN.rep
Operational Value Detail	OPERATIONAL_DTL.rep
Operational Value Summary	OPERATIONAL_SUM.rep
Order Conf	ORD_CONF.rep
Order Variance Qty by Product	ORD_VAR_QTY_BY_PROD.rep
Order Variance Qty by Store	ORD_VAR_QTY_BY_STORE.rep
Order Variance Qty by Trip	ORD_VAR_QTY_BY_TRIP.rep
PL Pallets Ticket	PL_PALLETS_TICKET.rep
PL Transport Order	PL_TRANSPORT_ORDER.rep
PL Trip Sheet	PL_TRIP_SHEET.rep
Pending Supplier Invoices	PENDSUPPINV.rep
Plan Exceptions	PLAN_EXCEPTIONS.rep



Poland Pallet Label	POLAND_PALLET_LABEL.rep
Polarspeed Label	PSD_LABEL.rep
Prov Booking Exception Report	PROV_BOOKING_EXCEPTION.rep
Rigel Delivery Note	RIGEL_DELIVERY_NOTE.rep
SCALE Drivers Manifest	SCALE_DRVR_MAN.rep
STL Driver Manifest	STL_DRVR_MAN.rep
Service Self Bill Invoice	SERVICE_SELFBILL.rep
Shipments Invoice	SHIPMENT_INVOICE.rep
Short Trips	SHORT_TRIPS.rep
Slot Usage	SLOT_USAGE.rep
Slot Variance	SLOT_VARIANCE.rep
Stapletons Load Sheet	STAP_LOAD_SHEET.rep
Store Cage Collections	STORE_CAGE_COLLECTIONS.rep
Supplier Invoice	SUPPLIER_INVOICE.rep
The Driver Sheet	TRANSPORT_DRIVER_SHEET.rep
The Front Desk Sheet	DEPARTURE_ITINERARIES.rep
Trailer Shunting	TRAILER_SHUNTING.rep
Trip Sheet (Generic Barcode)	TRIP_SHEET_GENERIC_BARCODE.rep
Trip Sheet (Generic Detail)	TRIP_SHEET_GENERIC_DETAIL.rep
Trip Sheet (Generic New)	TRIP_SHEET_GENERIC_NEW.rep
Trip Sheet (Generic)	TRIP_SHEET_GENERIC.rep
Trip Sheet BNL	TRIP_SHEET_BNL.rep
Trip Sheet Dunelm	TRIP_SHEET_DUNELM.rep
Trip Sheet Dunelm (Detail)	TRIP_SHEET_DUNELM_DETAIL.rep
Trip Sheet Dunelm (New)	TRIP_SHEET_DUNELM_NEW.rep
Trip Sheet TDL	TRIP_SHEET_TDL.rep
Trip Summary	TRIP_SUMMARY.rep
Unplanned Product	UNPLANNED_PRODUCT.rep
Unplanned Quantity	UNPLANNED_QUANTITY.rep
Unscheduled Order Report	UNSCHED_ORDERS.rep
Vehicle Despatch	VEHICLE_DESPATCH.rep
Vehicle Utilisation	VEHICLE_UTILISATION_REPORT.rep

