

Fixed Templates

Aptean Ltd
Copyright © 2011-2026.

Contents

1 Fixed Templates.....	1
1.1 CREATE TEMPLATE.....	1
1.2 IMPORT SCHEDULE.....	2
1.3 Further Configuration.....	2

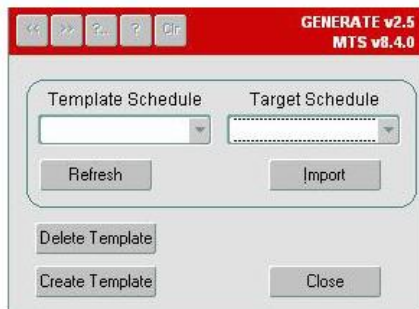
1 Fixed Templates

Fixed Templates provides functionality to copy an entire Schedule of Trips, Orders and their associated Haulage Activities for a specific Depot in to a named Template. The Template can then be generated into another Schedule to effectively copy a Depot based Schedule from one Schedule Date to another.

Fixed Schedules allow users to create a template based on orders and trips which can be used to generate future schedules. The template will generate new orders and plan them on the new trips, eliminating the need to create orders or perform planning.

The Fixed Schedule screen is accessed from the Administration menu in C-TMS.

Selecting the menu item will display the following screen. Within the screen, users may create templates and generate schedules from the templates. There is a list of available templates and a list of target schedules.

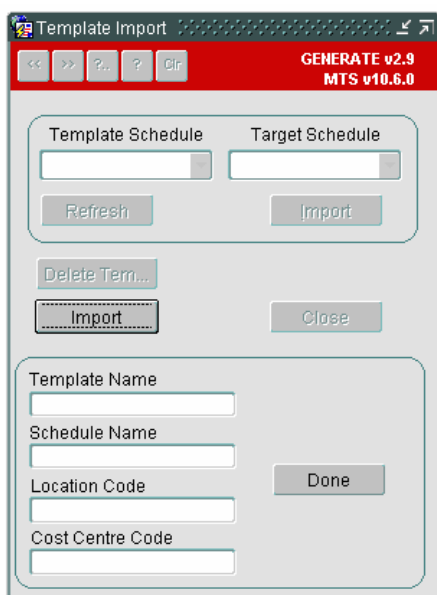


The target schedule will be required to be created, so that it is available to select from the drop down menu

1.1 CREATE TEMPLATE

Allows you to specify a Schedule of Trips, Orders and the Haulage Activities that associate the Loading and Unloading of Orders on Trip Stops for a user specified Depot to be copied into a Fixed Template. The Fixed Template can be named with an appropriately descriptive name such as TUE_SWI_NP for a typical Tuesday Non-Perishable Schedule for the Swindon Depot. This function effectively takes snapshot of a Depot Schedule so that it can be reused on an alternative Schedule in the future.

Selecting Create Template displays the following screen.



You will specify a name for the template, this should be named so it is easily identified in the drop down list. A suggested naming convention would be "MON-SUMMER", "MON-WINTER", "TUES-SUMMER" etc.

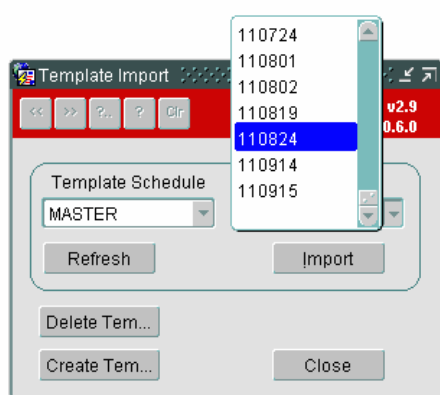
You will then specify the source schedule to be copied for the template. Where there are orders and trips for more than one cost centre or location, you may specify to base the template on orders for a specific location or cost centre.

Once the data is populated, select **Import** to create the template.

When the import is complete, the system will confirm the number of orders and trips created for the template. Select **OK** to confirm the creation of the template.

1.2 IMPORT SCHEDULE

This provides the facility to generate a new Schedule of Trip, Order and Haulage Activities for a specific Depot from a previously created Fixed Template. A stored fixed Template can be selected along with a target Schedule date and then the Template generated into the target Schedule creating all the Trips, Orders and associated Haulage Activities that were stored in the Fixed Template.



This functionality is typically used to generate Depot Schedules for particular days of the week where the deliveries made on the day do not vary greatly from week to week.

You first select a schedule you wish to copy, all orders and trips on the schedule will be copied. Any unscheduled orders on the schedule will also be copied.

The schedule will include orders being collected today for delivery tomorrow and orders which were collected yesterday for delivery today. The schedule will be based on a day of the week - eg MONDAY and will show the orders collected on a Monday and the orders delivered on a Monday.

1.3 Further Configuration

The following System Parameters affect this functionality:

Parameter	Description	Level
FIX_NULL_BOOKING_REF	Set booking Ref to Null for fixed schedules	COST CENTRE
ORD_FIXED_SCHEDULE_CHECK	Check for existing fixed schedule generated orders	CUSTOMER
SCH_DEFAULT_FIXED_TEMPLATE	Default Fixed Template Name for Auto Generation	SYSTEM
TRM_FIXED_TRIP_STATUS	Determines status of trips created via Fixed Schedules. P for PLANNED or A for ACCEPTED.	SYSTEM

