

Load Rates

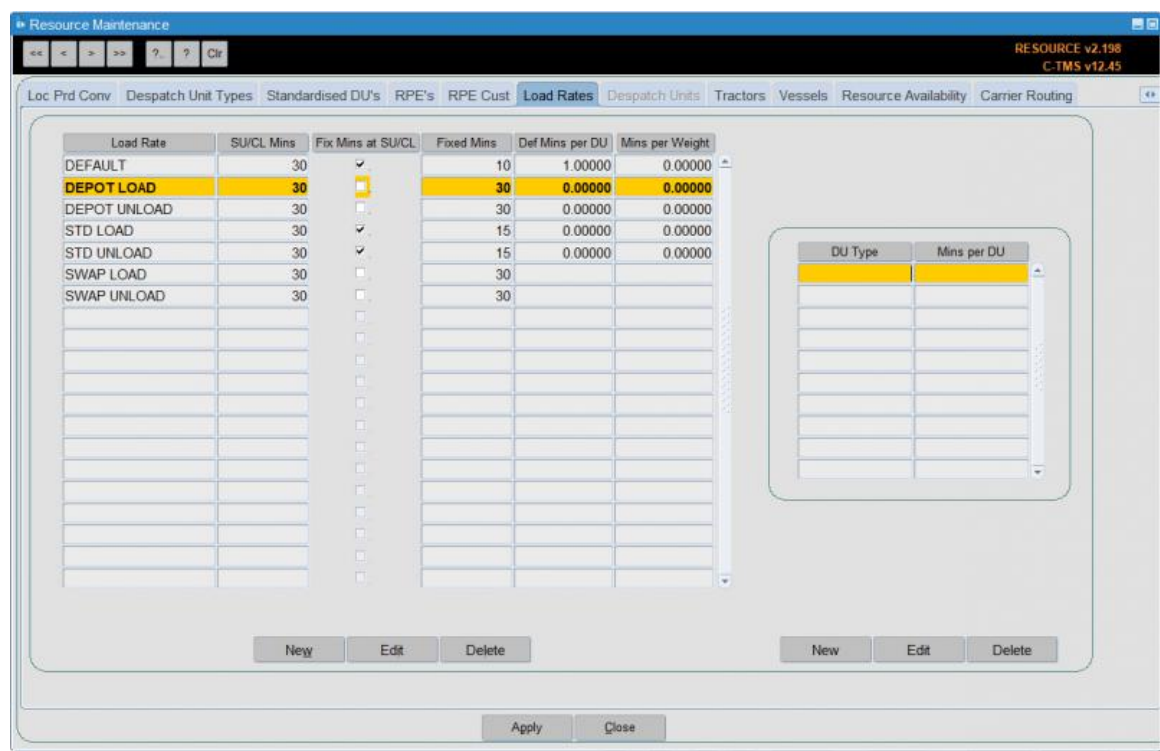
Aptean Ltd
Copyright © 2011-2026.

Contents

1 Load Rates.....1

1 Load Rates

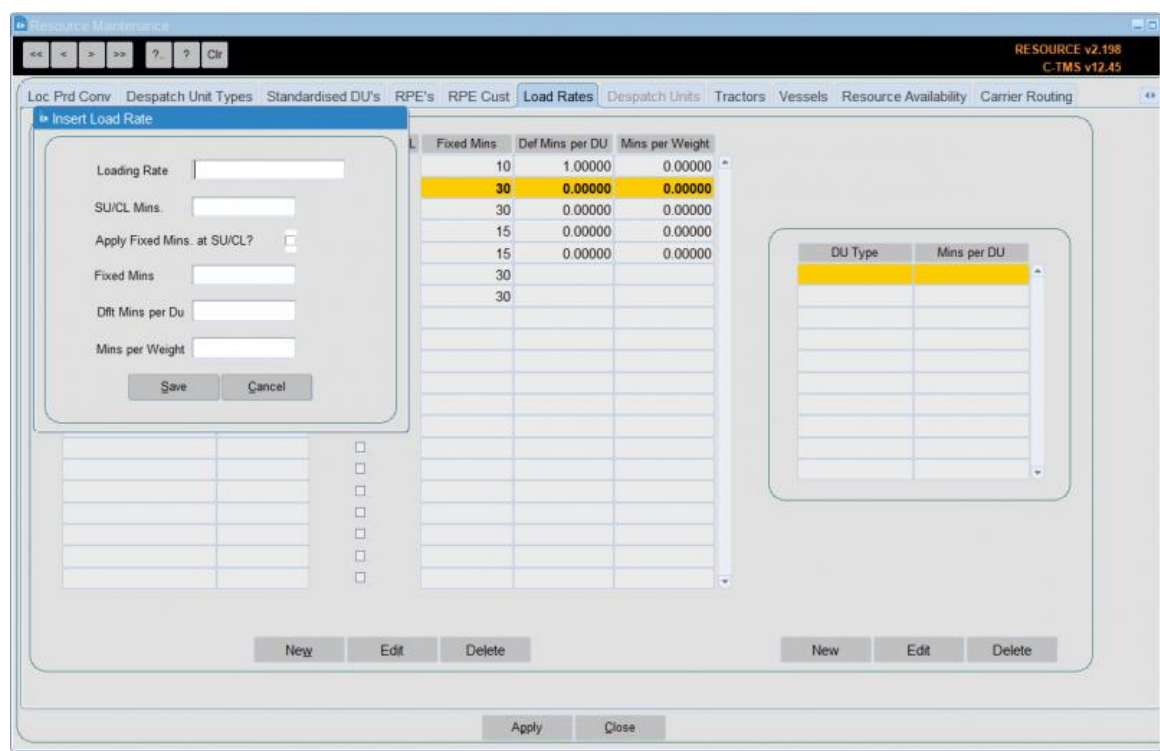
Configuration of the rates taken to load different DU types is provided in this section.



Typically, this is used to represent the particular dispatch units onto Trailers and also includes categories such as default start-up and close-down times.

Load Rates can be configured to fix time at locations where product is either loaded or unloaded; a fixed value can also be applied to the start up and close down of a trip as detailed below.

To create a new load rate, click **New**:



- Loading Rate - Enter the name for the Loading Rate,
- SU/CL Mins - any time to be applied at start up or close down
- Apply Fixed Mins at SU/CL - select whether or not the fixed minutes below is also applied at SU/CL stops on top of the fixed minutes above.
- Fixed Mins - define any fixed time to be applied at stops which can then be added to a value per despatch unit:
- Dfit Mins per Du
- Mins per Weight

Clicking **Save** and **Cancel** will return you to the main form.

You can also assign different DU types to a load rate with varying default mins for loading/unloading,

To do this, select the rate and then click **New** on the right-hand panel - the "Insert Load Rate Detail" will be shown.

The screenshot shows the 'Resource Maintenance' application with the 'Load Rates' tab selected. A table on the left lists load rates and their SU/CL Mins. The 'DEPOT LOAD' row is highlighted. An 'Insert Load Rate Detail' dialog box is open, prompting for 'DU Type' and 'Mins per DU'. The dialog has 'Look Up', 'Save', and 'Cancel' buttons. The background table has columns for Load Rate, SU/CL Mins, and a checkbox. The right panel has a 'New' button and a table for DU Type and Mins per DU.

Load Rate	SU/CL Mins	Fix
DEFAULT	30	
DEPOT LOAD	30	
DEPOT UNLOAD	30	
STD LOAD	30	
STD UNLOAD	30	
SWAP LOAD	30	
SWAP UNLOAD	30	

Enter the DU Type (using the supplied look up) and rate in mins.

Click **Save** and the form is updated with the new entry. You can continue and enter another DU type or click **Cancel** to return to the main form.

