

Loading Management

Aptean Ltd
Copyright © 2011-2026.

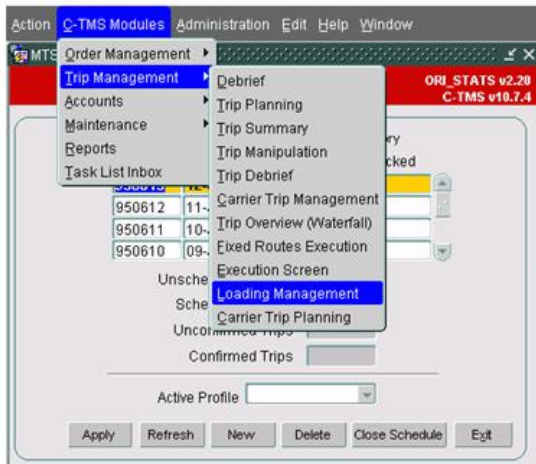
Contents

1 Loading Management.....	1
1.1 Searching.....	1
1.2 Display.....	1
1.3 Processing.....	2

1 Loading Management

The ?Loading Management? screen is a module within C-TMS that allows the users to assign despatch bays, carriers and trailers to outbound trips, and to send a release loading message to WCS.

Access from the menu is shown below:



The screenshot below shows an example of the outbound trips present on a schedule in the loading depot:

 A screenshot of the 'Loading Management' screen. The top bar shows 'Schedule: 110621', 'Loading Depot: DHLMER', and 'Trip ID:'. Below this are checkboxes for 'Set Despatch Bay for all Trips' and 'Release Loading for all Trips', and a 'Despatch Bay' field. The main area contains two tables. The left table lists trips with columns: Start Time, Trip ID, Trip Status, Carrier, Trailer, Despatch Lane, and Set Release Bay Loading. The right table lists transport orders with columns: Order, Drop, DU Type, RPEs, DUs, and DUs. The bottom of the screen has 'Save', 'Close', and 'Refresh' buttons.

Start Time	Trip ID	Trip Status	Carrier	Trailer	Despatch Lane	Set Release Bay Loading
12:06	RTE-00002096	PENDING	DHLMER			
03:00	MAN-00002207	LOADED	DHLMER	101		
05:00	MAN-00001914	PENDING	DHLMER	180		
05:30	MAN-00001915	PENDING	DHLMER	107		
05:49	PAR-00002208	PENDING	DHLMER			
06:00	MAN-00001917	PENDING	DHLMER	105		
06:03	PAR-00002209	PENDING	DHLMER			
06:07	PAR-00002210	PENDING	DHLMER			
06:11	MAN-00001924	PENDING	DHLMER	109		
06:30	MAN-00001803	PENDING	DHLMER	106	DESP12	
06:30	MAN-00001805	PENDING	DHLMER	102	DESP07	
07:15	MAN-00001916	PENDING	DHLMER	107		
07:30	MAN-00001925	PENDING	DHLMER	RO99XYP	DESP31	
08:04	MAN-00002205	LOADED	DHLMER	202029		
08:04	MAN-00002206	LOADED	DHLMER	108		
08:06	PAR-00002211	PENDING	DHLMER			
10:00	MAN-00001918	PENDING	DHLMER	107		

Order	Drop	DU Type	RPEs	DUs	DUs
3001325533	0830	Trafford	CTN		
3001325993	0620	Warrington	CTN		
3001326248	0510	Walsall	CTN		

1.1 Searching

The ?Schedule? and the ?Loading Depot?, plus the optional ?Trip ID?, may be used as search parameters and the search may be performed via the ?Refresh? button.

A list of values is available in the ?Loading Depot?, ?Trip ID?, ?Despatch Bay?, ?Carrier?, ?Trailer? and ?Despatch lane? fields.

1.2 Display

The first line displayed contains the search parameters ?Schedule?, ?Loading Depot? and ?Trip ID?, plus 2 tick boxes ?Set Despatch Bay for all Trips? and ?Release Loading for all Trips?, plus the ?Despatch Bay?: the tick boxes and the ?Despatch Bay? field are used to update the trips and not as search parameters (see the ?Processing? section below).

The screen is designed to display the active trips being loaded at the owning depot in a table on the left-hand side and the trip's transport orders in a separate table on the right-hand side.



In the example above trip ?RTE-00002096? is on schedule ?110621? for loading at depot ?DHLMER? and it has 3 transport orders ?3001325533?, ?3001325993? and ?300132648?.

The trips are displayed in the ascending sequence of ?Start Time? and ?Trip ID? so that the earliest scheduled trips are displayed first; the transport orders assigned to the trips are displayed in the sequence of their customer references (i.e. in the ?Order? column).

Each trip will display the following data:

Heading	Description
Start Time	The start time of the trip on the schedule
Trip ID	The trip ID
Trip Status	The description of the calculated trip status based on the progress of the loading of the items onto the trailer (see notes below for a full description of the calculation)
Trailer	The trailer ID assigned to the first stop of the trip
Despatch Lane	The despatch lane in which the trailer is being loaded
Set Bay	A tick box to indicate if the despatch lane has been added, changed or deleted within the current session
Release Loading	A tick box to indicate whether the trip will generate its 'Release Loading' message when the user presses 'Save'

Each order will display the following data:

Heading	Description
Order	The customer reference of the transport order
Drop	The destination location code and name of the transport order
DU Type	The DU type of the items being loaded
RPEs Planned	The RPE quantity of items scanned for despatch
DUs Planned	The quantity of items scanned for despatch (using reason code SU, LN, ON, EN, LP, OP, EP or IA)
DUs Loaded	The quantity of items scanned as loaded (using reason code SL, XL, OL or UL)
Totals	A subtotal of the quantities per trip

The ?Trip Status? is calculated based as the situation of the scanned items:

Trip Status	Description
PENDING	The items on the trip have not been scanned for despatch and a 442 release loading message has not been sent to WCS
LOADING	An item on the trip has been scanned for despatch and a 442 release loading message has been sent to WCS
LOADED	All of the items on the trip have been scanned as loaded and a 841 loading confirmation message has been received from WCS

1.3 Processing

The screen allows the user to assign a despatch lane to the trip and thus move the items to that despatch lane, and to send the 442 release loading message to WCS.

1.3.1 Despatch Lane Assignment

There are 3 methods to assign trips to a despatch lane:

1. Enter the ?Despatch Bay? in the field of that name and tick the ?Set Despatch Bay for all Trips? box: this will then assign the despatch bay selected as the despatch lane of each trip that fulfils the following criteria:

- a) A despatch lane has not been assigned already to the trip.
- b) The trip has a status of ?PLANNED?, ?ACCEPTED? or ?EN-ROUTE?.

2. Tick the ?Set Despatch Bay for all Trips? box without selecting a ?Despatch Bay? in the field of that name: this will then assign a default despatch lane setup for the first drop of the trip as the despatch lane of each trip that fulfils the following criteria:



- a) A despatch lane has not been assigned already to the trip.
 - b) The trip has a status of 'PLANNED', 'ACCEPTED' or 'EN-ROUTE'.
 - c) A default despatch lane exists for the first drop of the trip.
3. Enter the 'Despatch Lane' of the trip.

Once the 'Despatch Lane' of the trip has been changed then its 'Set Bay' box will be ticked to indicate that the change has happened.

1.3.2 Despatch Lane De-assignment

If the 'Set Bay' box is ticked and the 'Set Despatch Bay for all Trips' box is unticked then the 'Despatch Lane' of the trip may be removed if it matches the 'Despatch Bay' set: this functionality allows the user to reverse the despatch lane assignment performed. Carrier Assignment The carrier may be assigned to the trip in the 'Carrier' field if the following conditions are met:

- The status of the trip is not one of 'CONFIRMED', 'ARCHIVE', 'DELETED', 'TENDERED', 'ACCEPTED', 'REJECTED' or 'EN-ROUTE'.
- The carrier is compatible with the tractor, driver and crew members.
- The current currency of the trip would not be changed.

1.3.3 Trailer Assignment

The trailer may be assigned to the trip in the 'Trailer' field if the following conditions are met:

- A carrier has been assigned to the trip.
- A compatible trailer type has been assigned to the trip.
- An incompatible tractor has not been assigned to the trip.

1.3.4 Release Loading

There are 2 methods to send a release loading message to WCS:

1. Tick the 'Release Loading for all Trips' box: this will then tick all of the 'Release Loading' boxes for the trips. If the box is unticked then all of the 'Release Loading' boxes for the trips will be unticked.
2. Tick the 'Release Loading' box for the trip.

1.3.5 Updating

If the 'Despatch Lane' has been changed then the current location of the order items will be moved to the despatch lane set if they are present in the grid or quality checked in a quarantine location.

If the 'Release Loading' box is ticked when the 'Save' button is pressed then a release loading 442 message will be sent to WCS.

