

Aptean

Maintenance - Network Table Guide

Calidus TMS - 12.45

14th October 2014 - 2.0
Reference: Maintenance

Contents

1 Network.....	1
1.1 Query Existing Points To Points.....	1
1.2 Create New Point To Point.....	2

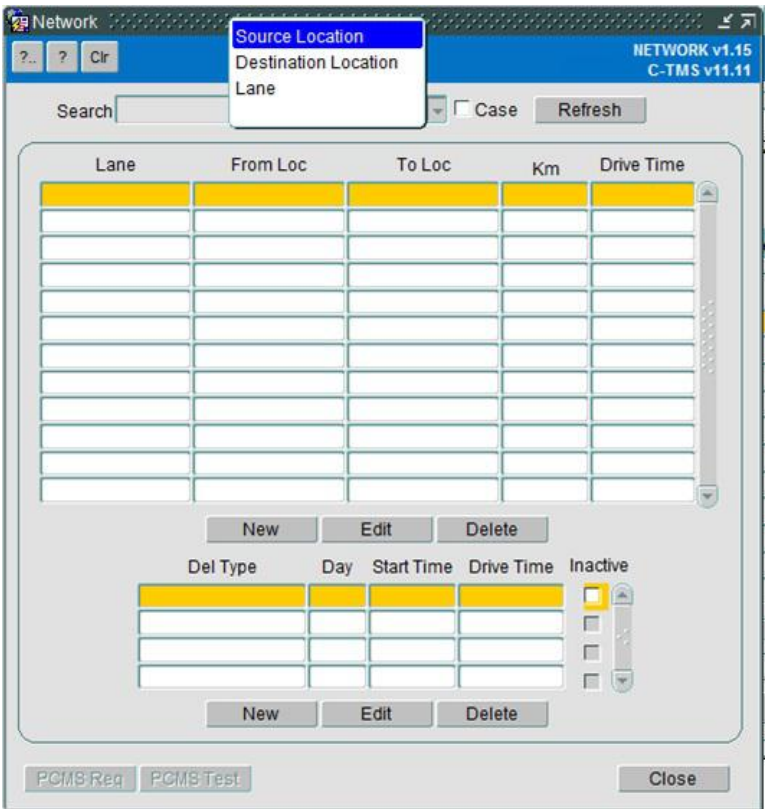
1 Network

Network Tables are used to maintain the Distance and Time between two locations in C-TMS.
Network Tables are accessed from Maintenance Menu.



1.1 Query Existing Points To Points

The Network Table can be queried based on the Source Location or the Destination Location. To query on the Source Location, just select the 'Source Location' from the search criteria drop down box and enter the source location in the 'From Loc' and click on the query button as shown below:



Search Source Location ☐ Case Refresh

Lane	From Loc	To Loc	Km	Drive Time
	C1			

New Edit Delete

Del Type	Day	Start Time	Drive Time	Inactive
				<input type="checkbox"/>
				<input type="checkbox"/>
				<input type="checkbox"/>

New Edit Delete

PCMS Req PCMS Test Close

The same steps needs to be followed to query on the Destination Locations, except that the search value should be entered in the 'To Loc' field.

1.2 Create New Point To Point

To create a new Point to Point network table, click on the **New** button and enter the details. Once you have entered the details, click **OK** to save the new point to point details of distance and time.

From Loc C1 Leeds Blood Centre

To Loc C138 Leeds Nuffield

Distance 35 Driving Time: Days Hours 1 Mins 5

OK Cancel

Lane	From Loc	To Loc	Km	Drive Time
	C1	C048	88	01:09
	C1	D1	58	00:55
	C1	M1	90	01:11

New Edit Delete

Del Type	Day	Start Time	Drive Time	Inactive
				<input type="checkbox"/>
				<input type="checkbox"/>
				<input type="checkbox"/>

New Edit Delete

PCMS Req PCMS Test Close

The newly created network table details are shown

