



Aptean

Maintenance - WCS Maintenance Guide

Calidus TMS - 12.45

7th May 2024 - 1.0
Reference: MAINTENANCE

Contents

1	WCS Maintenance.....	1
1.1	Main Functions.....	1

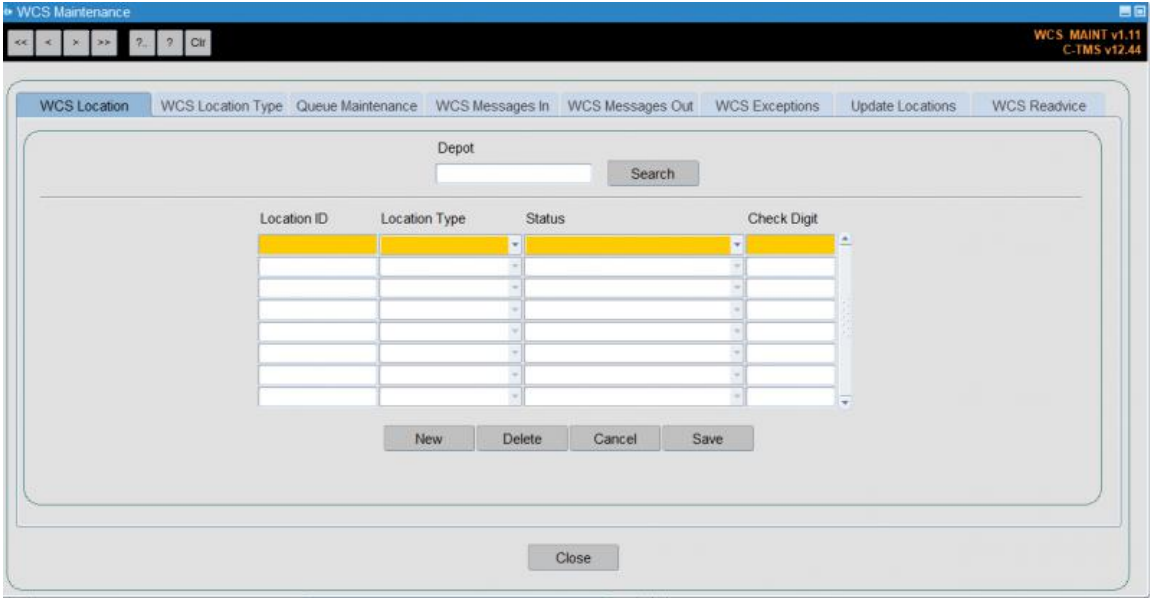
1 WCS Maintenance

The WCS Maintenance screen is used predominantly for the control of the WCS RF scanning system and the interface to that system.

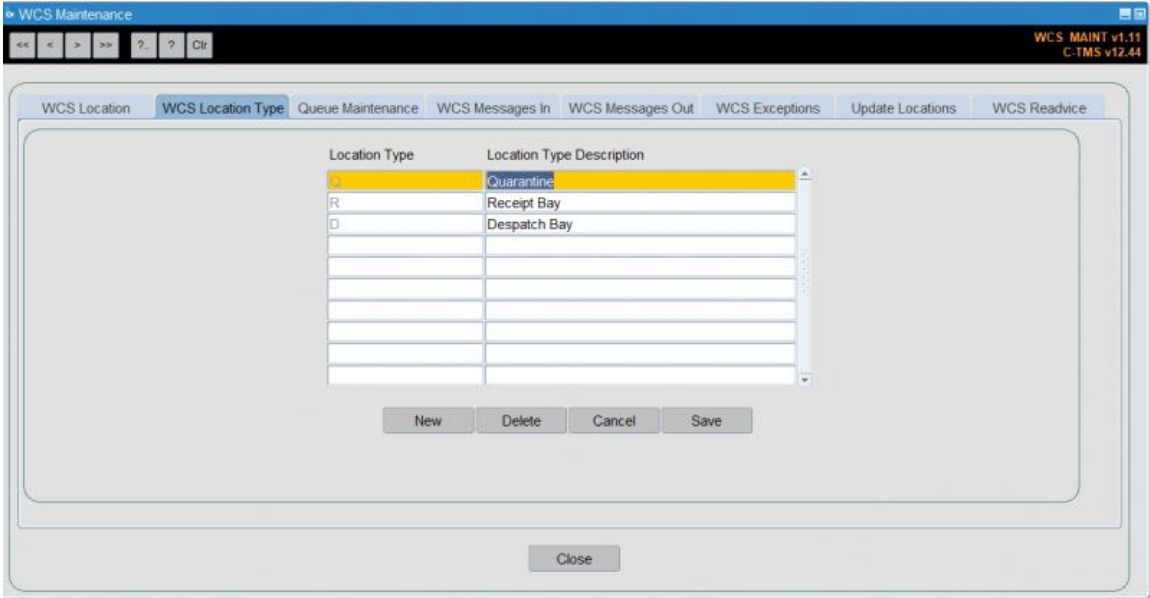
1.1 Main Functions

1.1.1 WCS Location

On this tab you can maintain the locations of each type for each depot.



1.1.2 WCS Location Type




These define the locations in the depots for storage of the different products, for example:

- Quarantine Locations
- Inbound Locations
- Outbound Locations



1.1.3 Queue Maintenance

 **Warning:** This system configuration will be preconfigured. If changed without appropriate knowledge, this will make the WCS system inaccessible.

Here, you can see the queues created for communication with the WCS. These can be configured per depot. You can start or stop the interface with the provided buttons.

1.1.4 WCS Messages In

On this tab you can view any messages coming in from WCS, plus the success.

1.1.5 WCS Messages Out

On this tab you can view any messages going out to WCS, plus the success.

1.1.6 WCS Exception

On this tab you can view any exceptions, debug messages, warnings, information or errors when processing messages coming in from WCS.

1.1.7 Update Locations

Here, you can remove the current location of all DUs in the Sin Bin.

1.1.8 WCS Readvice

Here, you can resend a manifest preadvice to WCS.

