

# **Package Maintenance**

Aptean Ltd  
Copyright © 2011-2026.

# Contents

1 Package Maintenance.....1

# 1 Package Maintenance

The package Maintenance screen contains a number of search parameters:

- Depot the package is based
- The schedule the package is on
- The package ID

Once you have entered your search parameters clicking 'Refresh' will load the details into the screen.

*Package Maintenance*

The details that can be viewed at the top section of the screen are:

*Top Details*

- Status (Status of the pallet Open/Closed)
- Decl Wgt (kg) - Declared weight of the pallet
- Act Wgt (kg) - The actual weight of the pallet
- Height, Length, Width - Dimensions of the pallet
- Label Printed - Tick box to show if a pallet label has been printed or not

The details in the bottom section of the screen contain:



*Lower Details*

- Pallet - Pallet the package is on
- Pallet Status - The pallet status
- Trip - Trip the package is on
- Depot

There are a number of buttons available on the package maintenance screen:

*Buttons*

#### Add to Pallet

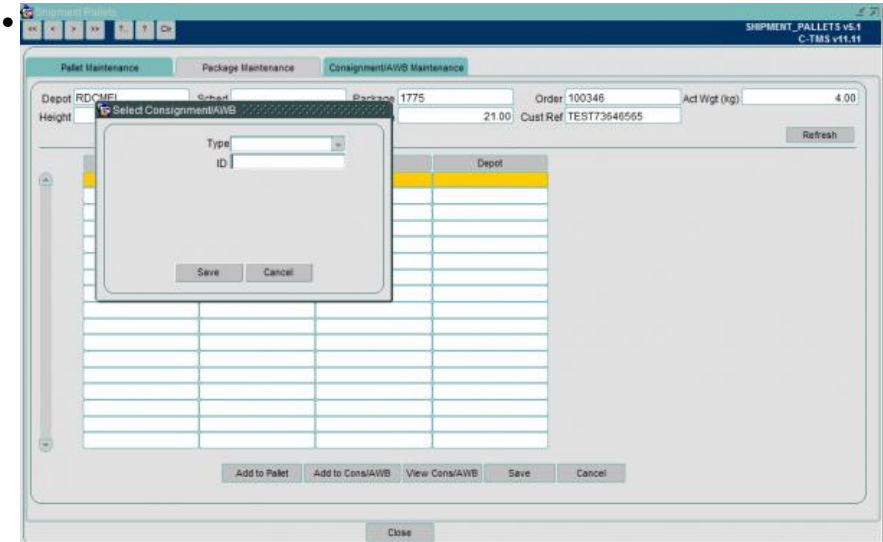
- Add to pallet opens a popup box that allows a pallet to be entered to add the package in the screen to be added to

*Add to Pallet*

#### Add to Cons/AWB

- Launches the popup screen to allow the package to be added to an Airway bill or consignment

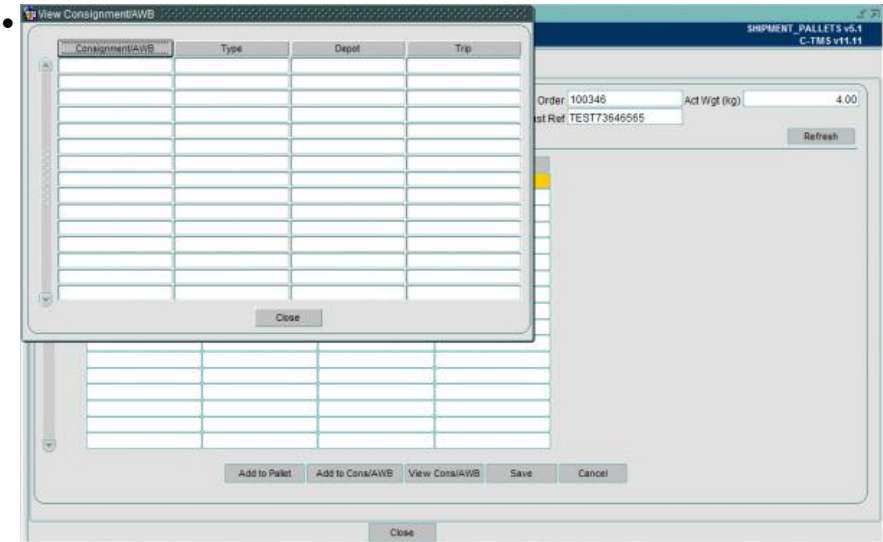




Add to Cons/AWB

View Cons/AWB

- Opens up a popup box to show the Consignment/AWB, Type, Depot and Trip the package is assigned



View Cons/AWBe

