

# **Shipment Pallets**

Aptean Ltd  
Copyright © 2011-2025.

# Contents

1 Shipment Pallets.....1

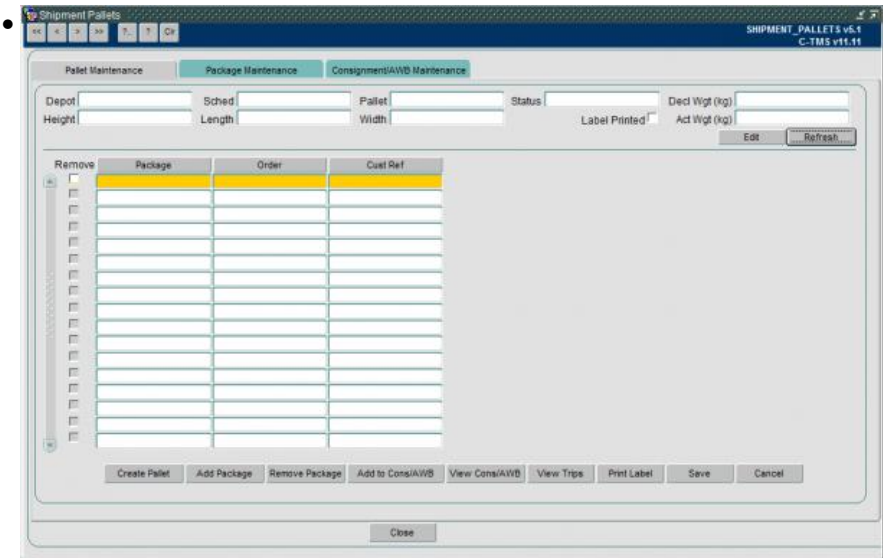
1.1 Shipment Pallets Maintenance.....1

# 1 Shipment Pallets

The Shipment Pallets screen allows you to see and maintain package, pallet and Waybill information created in Calidus MCS when scanning items through the network.

The screen has tabs that allow you to see all 3 elements.

## 1.1 Shipment Pallets Maintenance

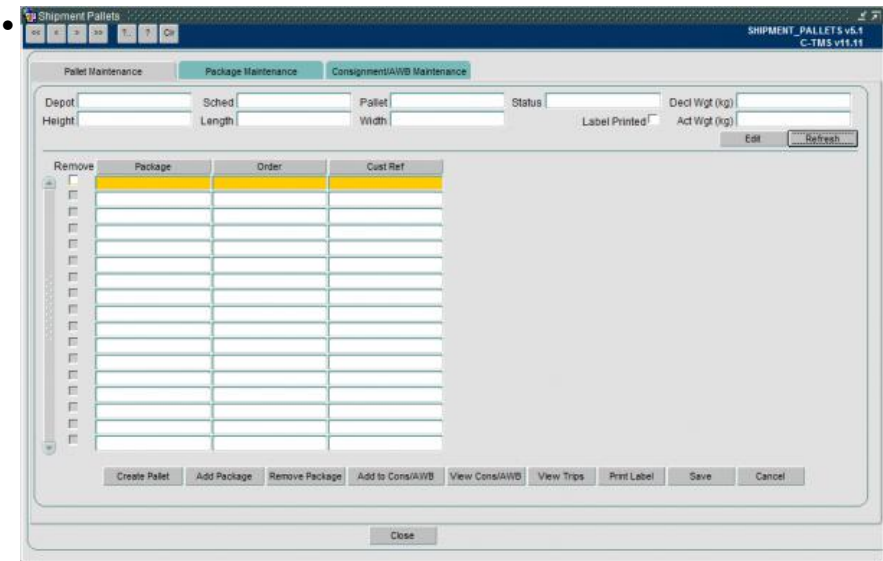


Pallet Maintenance

The pallet Maintenance screen contains a number of search parameters:

- Depot at which the pallet was built
- The schedule the pallet is on
- The pallet ID

Once you have entered your search parameters clicking 'Refresh' will load the details into the screen.



Top Details

The details that can be viewed at the top section of the screen are:



- Status (Status of the pallet Open/Closed)
- Decl Wgt (kg) - Declared weight of the pallet
- Act Wgt (kg) - The actual weight of the pallet
- Height, Length, Width - Dimensions of the pallet
- Label Printed - Tick box to show if a pallet label has been printed or not

#### Lower Details

The details in the bottom section of the screen contain:

- Package - The package present on the pallet
- Order - The order the package is on
- Cust Ref - Customer reference for the package

There are a number of buttons available on shipment pallet screen:

- 

#### Buttons

##### Create Pallet

- Clicking the create pallet button generates a new pallet ID in the Pallet field

##### Add Package

- Clicking add package opens up a popup box where a package ID is entered once saved this then populates the package fields in the main screen

#### Add Package


##### Remove Package

- Clicking remove package will remove a package from a pallet. Note a package cannot be removed from a closed pallet. If a package is to be removed from a closed pallet the pallet must be reopened



### Add to Cons/AWB

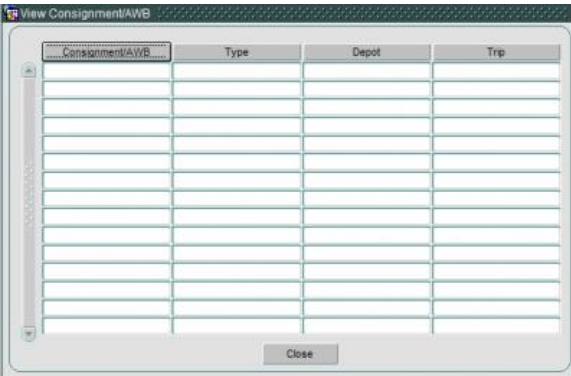
- Clicking the add to CONS/AWB button will open the Consignment and AWB entry popup box where the type is entered 'A' = Airway bill, 'C' = Consignment. The consignment or airway bill is also entered

• 

*Add to Cons/AWB*

### View Cons/AWB

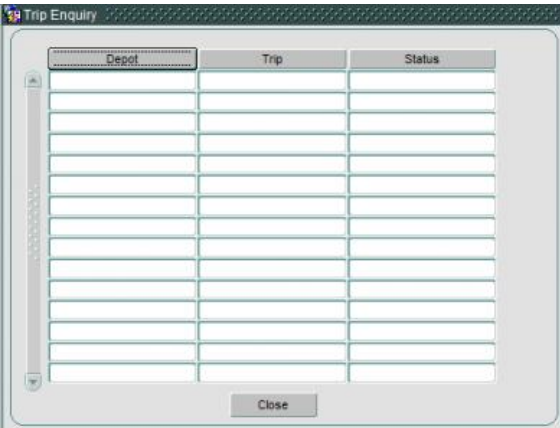
- Clicking View Cons/AWB opens up a popup box which shows the Consignment/AWB number, the type, the depot and the Trip the consignment was assigned

• 

*View Cons/AWB*

### View Trips

- Clicking view trips opens up the trips popup box which shows the depot the trip started, the trip ID and the Status of the trip

• 

*View Trips*

### Print Label

- Clicking 'Print Label' allows the pallet label to be printed if it has already not been printed or reprinted if it has already been printed

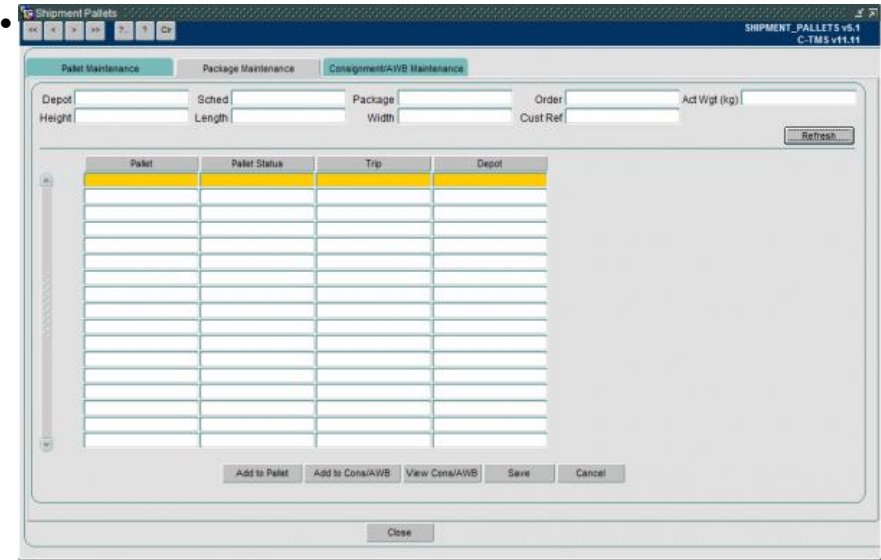


1.1.1 Packages Maintenance

The package Maintenance screen contains a number of search parameters:

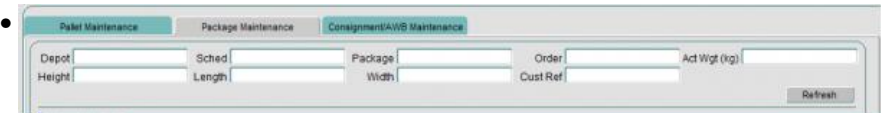
- Depot the package is based
- The schedule the package is on
- The package ID

Once you have entered your search parameters clicking 'Refresh' will load the details into the screen.



Package Maintenance

The details that can be viewed at the top section of the screen are:



Top Details

- Status (Status of the pallet Open/Closed)
- Decl Wgt (kg) - Declared weight of the pallet
- Act Wgt (kg) - The actual weight of the pallet
- Height, Length, Width - Dimensions of the pallet
- Label Printed - Tick box to show if a pallet label has been printed or not

The details in the bottom section of the screen contain:



### Lower Details

- Pallet - Pallet the package is on
- Pallet Status - The pallet status
- Trip - Trip the package is on
- Depot

There are a number of buttons available on the package maintenance screen:

### Buttons

### Add to Pallet

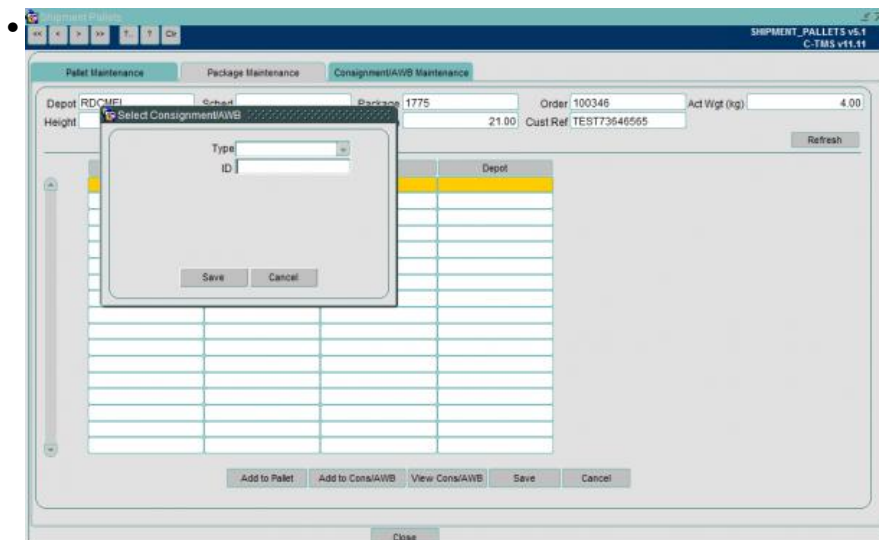
- Add to pallet opens a popup box that allows a pallet to be entered to add the package in the screen to be added to

### Add to Pallet

### Add to Cons/AWB

- Launches the popup screen to allow the package to be added to an Airway bill or consignment

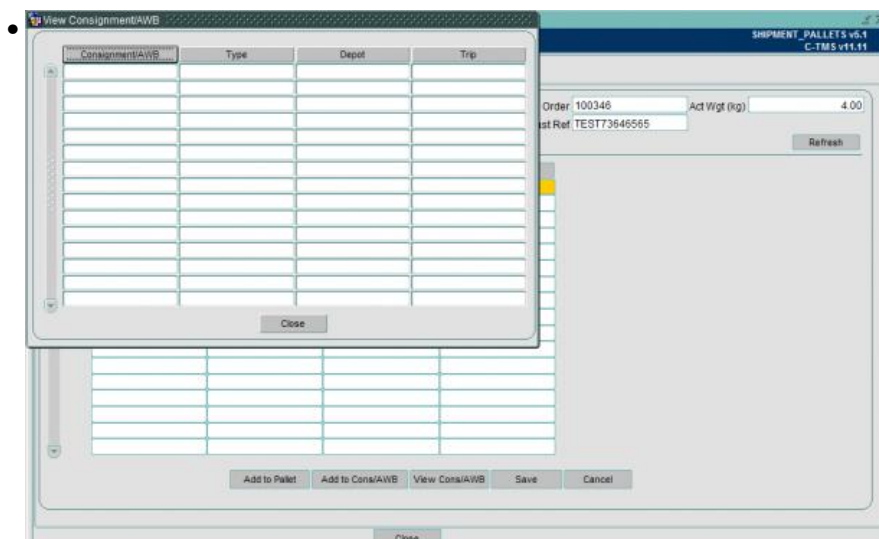




Add to Cons/AWB

## View Cons/AWB

- Opens up a popup box to show the Consignment/AWB, Type, Depot and Trip the package is assigned



View Cons/AWB

### 1.1.2 Consignment/AWB Maintenance

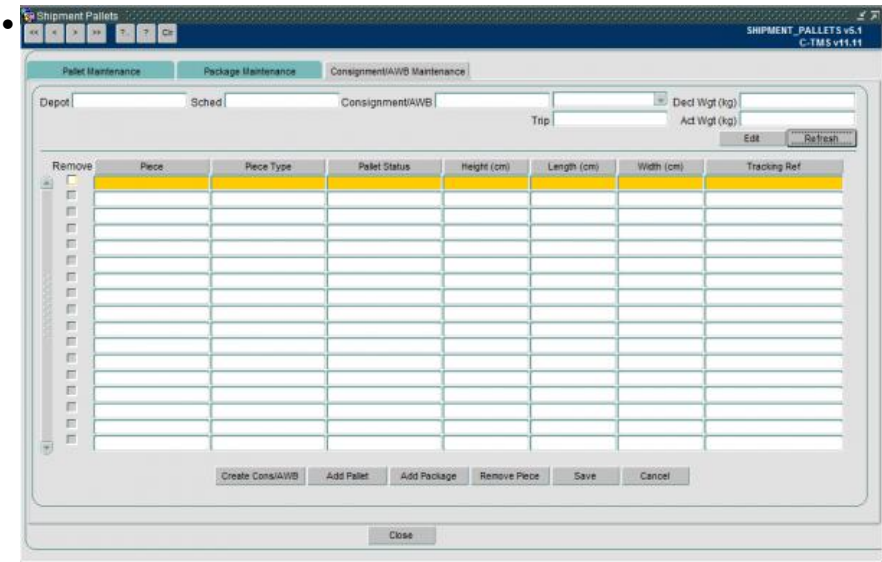
The Consignment/AWB Maintenance screen contains a number of search parameters:

- Depot the package is based
- The schedule the package is on
- Consignment/AWB number

Once you have entered your search parameters clicking 'Refresh' will load the details into the screen







Consignment/AWB Maintenance

Details include:

- Piece - ID of the item on the AWB/Cons
- Piece Type - Whether it is a Pallet or loose freight
- Pallet Status - (Open or Closed) Only if it is a piece type pallet
- Height, Length, Width (cm)
- Tracking Ref - 3rd Party label reference

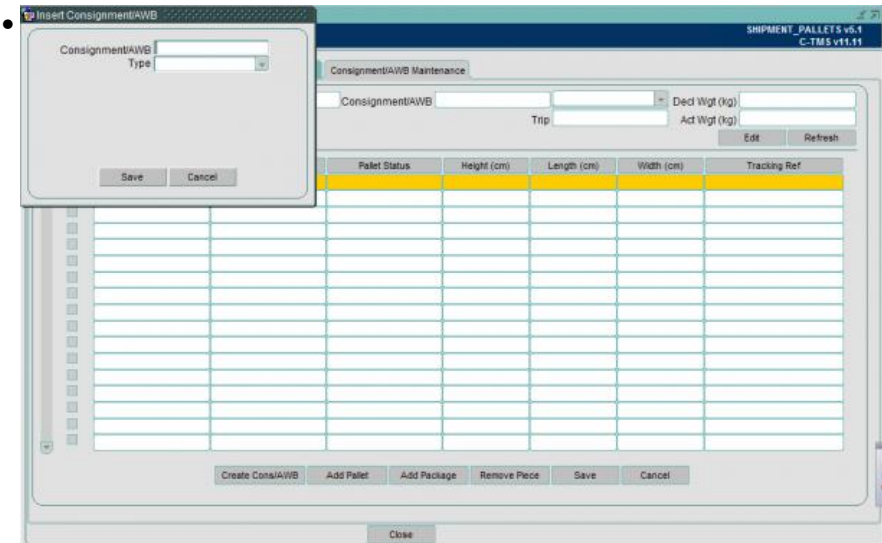
There are a number of functions available in the Consignment/AWB Maintenance screen:



Buttons

Create Cons/AWB

- This button opens up a popup box where a Consignment or AWB can be entered. With a type 'A' or 'C' as to whether it is a consignment or AWB

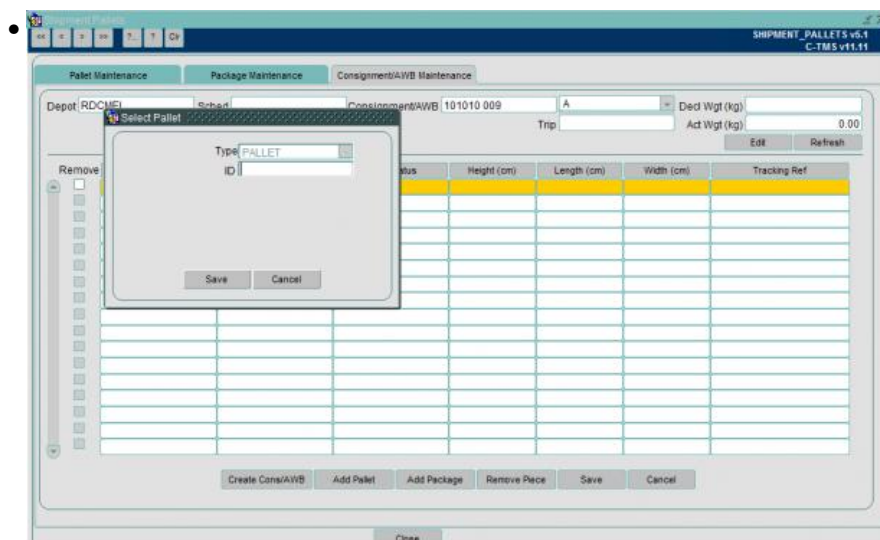


Create Cons/AWB

Add Pallet



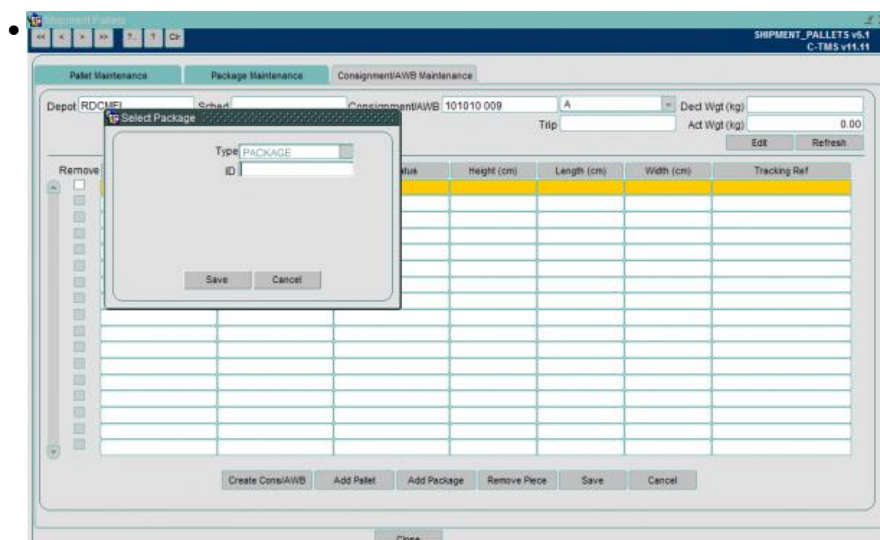
- Opens a popup box to search for a pallet ID to add to the consignment



*Add Pallet*

### Add Package

- This opens a popup box to add a package ID to the Consignment or Airway bill



*Add Package*

### Remove Piece

- Removes a highlighted piece from the Consignment or AWB

