

Oak Furnitureland

JB Global POD Note Changes

Functional Specification

26th February 2019 - 1.0
Reference: FS 354567

Contents

1 Appendix A: TEST PLAN.....	1
2 Appendix B: Quote & Document References.....	2
2.1 Scope.....	2
3 Set-up.....	4
3.1 Pre-requisites.....	4
3.2 Menu Structure.....	4
3.3 Data.....	4
4 Functional Description.....	5
4.1 UDF Admin Screen.....	5
4.2 Device.....	5
5 Appendix A: TEST PLAN.....	6
6 Appendix B: Quote & Document References.....	8
6.1 Scope.....	9
7 Set-up.....	10
7.1 Pre-requisites.....	10
7.2 Menu Structure.....	10
7.3 Data.....	10
8 Functional Description.....	11
8.1 Admin UDF Configuration Screen.....	11
8.2 Mobile Device Changes.....	12
9 Appendix A: TEST PLAN.....	14
10 Appendix B: Quote & Document References.....	16
10.1 Scope.....	17
11 Set-up.....	18
11.1 Pre-requisites.....	18
11.2 Menu Structure.....	18
11.3 Data.....	18
12 Functional Description.....	19
12.1 Admin UDF Configuration Screen.....	19
12.2 Mobile Device Changes.....	19
13 Appendix A: TEST PLAN.....	21
14 Appendix B: Quote & Document References.....	23

1 Appendix A: TEST PLAN

Test Script / Scenario Reference	Custom Mobile Device Styling	Call Number(s): 344082 SCR-344060-02
Test Script / Scenario Description	Testing the new Oak Furniture Land mobile device style	PASS / ISSUES / FAIL
Menu Access	N/A	
Pre-requisites	A system configured as Oak Furniture Land.	Tested By:
Test Objective	To test the new Oak Furniture Land style.	Date:

Step	Action	Result	Remarks	P/F
1	Mobile Device			
	Ensure there are "Oak Furniture Land"-type jobs available for execution on the device.			
1.01	Configure to the "Oak Furniture Land" style. Load the mobile device app on a device and complete a job.	The login screen should show the correct logo. The Job list should be configured as expected. The "Deliver Checked" check box should not be present. The Containers (Item) list should be as expected. The word "Container" should be replaced with "Item" in all screens, messages and pop-ups. The Products list should be as expected. No Signatory should be present on customer signature.		



2 Appendix B: Quote & Document References

Cost Details				
Activity	Estimate No. of Days	No. of Days	Rate per Day (?)	Cost (? Exc. VAT)
Requirements	0.00	0.00	750	?0.00
Change Request Evaluation	0.00	0.00	750	?0.00
Functional Specification	0.25	0.50	750	?375.00
Technical Specification	0.00	0.00	750	?0.00
Development	0.25	0.75	750	?562.50
Testing and Release	0.25	0.25	750	?187.50
Implementation	0.25	0.25	750	?187.50
Project Management	0.00	0.00	750	?0.00
TOTAL	1.00	1.75		?1,312.50

Estimate excludes training, release to live and go live support.

B.1 References

Ref No	Document Title & ID	Version	Date
1	REQ 344060 Oak Furniture Land Solution Design	0.6	17/07/2017

B.2 Glossary

Term	Definition
EPOD	Electronic Proof of Delivery. The OBS EPOD system is <i>CALIDUS</i> ePOD.
<i>CALIDUS</i> eSERV	The OBS mobile system to complete Service functionality in the field. This is part of the <i>CALIDUS</i> ePOD system.
PDA	The mobile device on which the C-ePOD system will run in the field. This can be a Phone, EDA or industrial PDA, running Android.
DAL	Data Access Layer. A mechanism for accessing data by the system that is removed from the application, allowing for simplified access and providing protection to the data, as only approved DAL methods can be used to modify it.
GPS	Global Positioning System. A mechanism of retrieving accurate positioning information in the form of Latitude and Longitude (Lat-Long) co-ordinates from a device.
GPRS, 3G, HSDPA, Data Service	All terms referring to mobile device network connectivity, and the speed at which the device connects to the internet.

B.3 Authorised By

Matt Turner OBSL Account Manager _____

Louis Merrett Customer Representative _____

Failed Delivery Check List and Complete

2.1 Scope

This change will be applied to system version 3.X.

 **Note:** Clausing a deliverable item (container) or commenting a product without changing the quantity will *not* set the job to amended, and therefore will not require the Failed Delivery Checklist to be entered.





3 Set-up

3.1 Pre-requisites

3.2 Menu Structure

3.3 Data

The Job Groups required will be agreed as part of the interface meetings. It is expected that there will be job groups as follows:

- Trunk Jobs e.g. "TRUNK" or "UNLOAD"
- Loading Jobs e.g. "LOAD"
- Delivery Jobs e.g. "DEL"
- Collection Jobs e.g. "COL"

The Failed Delivery Checklist will be configured against as a User-Defined Form (UDF) against the Job Groups that require it (i.e. Collection and Delivery jobs).

The screenshot shows the 'UDF Configuration Details' window. The 'UDF Loading Settings' section shows 'Description: JBG Failed Delivery', 'Key Type: Job Group', 'Config Type: Job Details', and 'Key Value: JBGDEL'. The 'Form Settings' section shows 'Name: Failed Delivery Checklist', 'Required: When Amended', and 'When Amended' dropdown set to 'Yes'. The 'Field List' table contains the following fields:

ID	Label
DELIVERY_ATTEMPTED	Have the delivery team tried to get the item into the room of your choice?
FIT_UNPACKED	Is it likely that the item will fit unpacked?
ALT_SOLUTION	Is there another solution that we can identify?
CUST_AWARE	Is the customer aware of the reason this cannot be delivered?

The 'Field Details' section for 'DELIVERY_ATTEMPTED' shows: ID: DELIVERY_ATTEMPTED, Type: Drop-down List, Label: Have the delivery team tried to get the item into the room of your choice?, Sub-Label: (empty), Group: (empty), Post-Test: (empty), Required: (checked), Action: None. The 'Form Preview' on the right shows the checklist questions and response options (Yes/No) for each field.

UDF Maintenance Screen




4 Functional Description

4.1 UDF Admin Screen

The Admin UDF Configuration screen (udf_config.aspx) will be amended when editing details of Job Details UDF only.

In this case only, the Required check box will be replaced with a drop-down list with the following values:

- Value "Y" displayed as "Yes"
- "A" - "When Amended"
- "N" - "No"


 **Note:** The values for this list will be controlled using the List Items functionality used for all other lists in the Admin system.

The select value for this drop-down list will be saved in the REQUIRED attribute of the FORM tag for the Job Details UDF configuration.

4.2 Device

The general UDF object (part of the styling code) will be modified to check this new value of the Required attribute.

The Job Details screen (JobDetails.js) will be modified to check the value of the REQUIRED attribute when validating the UDF in Job Details only. If set to "A", the required fields in the form will only be validated that they have been entered if the job is amended (i.e. any item or product has been cancelled, or product quantity changed. The Amended flag of the Job (EPL_AMENDED_FLAG of the PDAJOB object) will be checked.

 **Note:** This will require evaluating whether the job has any amendments before completing, *or* validating the UDF after completion. In either case this will require changes to the completion process to check this.

 **Note:** Clousing a container or commenting a product without changing the quantity will *not* set the job to amended, and therefore will not require the Job Details UDF (the Failed Delivery Checklist) to be entered.



5 Appendix A: TEST PLAN

Test Script / Scenario Reference	<i>Job UDF Required dependent on Job Amended</i>	Call Number(s): 344083 SCR-344060-04
Test Script / Scenario Description	<i>Testing that Job Amended status affects Job Details UDF</i>	PASS / ISSUES / FAIL
Menu Access	<i>N/A</i>	
Pre-requisites	<i>A system configured as Oak Furniture Land.</i>	Tested By:
Test Objective	<i>To test that: Job Details UDF can be entered with the new Required flag and; the Job Details UDF fields are only required if the job is amended.</i>	Date:

Step	Action	Result	Remarks	P/F
1	Admin Tests			
1.01	In the UDF Configuration screen, add a UDF configuration for anything except Job Details (for example, Container UDF).	The screen should operate as now, and allow the entry of a check box only for the <i>Required</i> element.		
1.02	Save that configuration. Add a UDF configuration for Job Details.	The screen should allow the entry of a drop-down list for the <i>Required</i> element, allowing the specified values..		
1.03	Save that configuration. Reload the two configurations created, using the Select button against the lines.	The values for the Required element should be displayed as set.		
1.04	Edit the configurations.	The required element should be able to be changed and save, for Job Details as a drop-down list, for others as a check box.		

Step	Action	Result	Remarks	P/F
2	Mobile Device Tests			
	<i>Ensure 2 job groups are created, one with a job details UDF set to Not Required and one with it set to "Amended Only". Both should have required fields. Ensure multiple jobs are created for the two Job Groups, with containers and products.</i>			
2.01	Start a job without required job details UDF. Complete all products and containers normally. Click the Complete button if required.	The Job should require the entry of the Job Details UDF.		



2.02	Start a job with job details UDF required when amended. Complete all products and containers normally. Click the Complete button if required.	The job may be completed and signature is requested.		
2.03	Start a job with job details UDF required when amended. Cancel some products and containers. Change a product quantity. Click the Complete button if required.	The Job should require the entry of the Job Details UDF.		
2.04	Start a job with job details UDF required when amended. Clause a single container. Complete all other products and containers normally. Click the Complete button if required.	The job may be completed and signature is requested.		



6 Appendix B: Quote & Document References

Cost Details				
Activity	Estimate No. of Days	No. of Days	Rate per Day (?)	Cost (? Exc. VAT)
Requirements	0.00	0.00	750	?0.00
Change Request Evaluation	0.00	0.00	750	?0.00
Functional Specification	0.50	0.50	750	?375.00
Technical Specification	0.00	0.00	750	?0.00
Development	1.25	1.75	750	?1,312.50
Testing and Release	0.25	0.25	750	?187.50
Implementation	0.25	0.25	750	?187.50
Project Management	0.25	0.25	750	?187.50
TOTAL	2.50	3.00		?2,250.00

Estimate excludes training, release to live and go live support.

B.1 References

Ref No	Document Title & ID	Version	Date
1	REQ 344060 Oak Furniture Land Solution Design	0.6	17/07/2017

B.2 Glossary

Term	Definition
EPOD	Electronic Proof of Delivery. The OBS EPOD system is <i>CALIDUS</i> ePOD.
<i>CALIDUS</i> eSERV	The OBS mobile system to complete Service functionality in the field. This is part of the <i>CALIDUS</i> ePOD system.
PDA	The mobile device on which the C-ePOD system will run in the field. This can be a Phone, EDA or industrial PDA, running Android.
DAL	Data Access Layer. A mechanism for accessing data by the system that is removed from the application, allowing for simplified access and providing protection to the data, as only approved DAL methods can be used to modify it.
GPS	Global Positioning System. A mechanism of retrieving accurate positioning information in the form of Latitude and Longitude (Lat-Long) co-ordinates from a device.
GPRS, 3G, HSDPA, Data Service	All terms referring to mobile device network connectivity, and the speed at which the device connects to the internet.

B.3 Authorised By

Matt Turner OBSL Account Manager _____

Louis Merrett Customer Representative _____

Lot Number Entry

This will be prompted as "Product Barcode" on the form. The driver will scan the Product Barcode in this field. The form will store the lot extracted from the barcode scanned (with validation).

The product barcode is in GS1 format, and contains:

- 91 - Agreed between suppliers - in this case this is confirmed to be the numeric Product ID, representative of the product code. This is up to 30 characters, but will predominantly be 4 numeric characters.
- 10 - Batch or Lot Number. This is up to 20 characters, but will predominantly be 5 numeric characters.



The photo will be present, labelled as "Missing Barcode" and allow as many photos as the driver requires.

Both of these items will be optional entry by the driver, and may be skipped.

The application will require changes to this UDF functionality for the following purposes:

- Recognise GS1 (UCC/EAN-128) barcodes
- Extract the correct AI (Application Identifier) for the Lot number from the barcode scanned

The driver can select to start this UDF page at any time against any Item by pressing the item in the list and selecting *Product Barcode'*

6.1 Scope

This change will be applied to system version 3.X.



7 Set-up

7.1 Pre-requisites

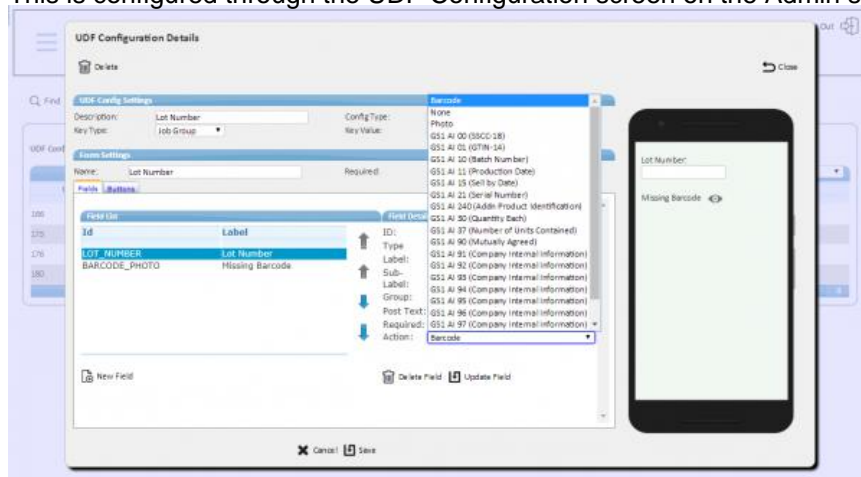
7.2 Menu Structure

7.3 Data

All items (containers) for the site will be configured to require a Lot number scan and a Photo, through the configuration of Container UDF for all items scanned for the Site, as follows:

```
<FORM NAME="Lot Number" REQUIRED="Y">
  <FIELD ID="LOT_NUMBER">
    <TEXT>Lot Number</TEXT>
    <FORMAT>N</FORMAT>
    <REQUIRED>N</REQUIRED>
    <ACTION>GS1:10</ACTION>
    <REGEXP>[0-9]{1-20}</REGEXP>
  </FIELD>
  <FIELD ID="BARCODE_PHOTO">
    <TEXT>Missing Barcode</TEXT>
    <FORMAT>P</FORMAT>
    <REQUIRED>N</REQUIRED>
    <ACTION>N</ACTION>
  </FIELD>
</FORM>
```

This is configured through the UDF Configuration screen on the Admin system:



Admin UDF Configuration, showing GS1 Barcode types



8 Functional Description

8.1 Admin UDF Configuration Screen

The UDF Configuration screen (udf_config.aspx) will be modified for this change.

A Validation field (labelled as such) will be added to this screen when entering fields, under the existing fields. This will allow entry of technical regular expressions for validation. These are valid for Text, Text Area and Numeric fields only. When saved, these will be saved into a REGEXP tag against the field.


The Barcode drop-down list will be modified to allow barcode scanning for Text, Text Area and Numeric field types only. The list will be extended to add the supported AI types.

For example: This should be defined in the List Items list, so that new AIs can be added as required. The value of this will be sent in the existing ACTION tag:

- "P" - "Photo"
- "B" - "Barcode (Whole Value)"
- "N" - "None"
- "GS1:10" - "GS1 AI 10 (Batch Number)"
- "GS1:91" - "GS1 AI 91 (Company Internal Information)"
- "GS1:3701" - GS1 AI 00 (SSCC-18)"
- etc

The list of GS1 barcode types to support in this list (on top of the 3 existing values) is as follows:

Key	Description
GS1:00	GS1 AI 00 (SSCC-18)
GS1:01	GS1 AI 01 (GTIN-14)
GS1:10	GS1 AI 10 (Batch Number)
GS1:11	GS1 AI 11 (Production Date)
GS1:15	GS1 AI 15 (Sell by Date)
GS1:21	GS1 AI 21 (Serial Number)
GS1:240	GS1 AI 240 (Addn Product Identification)
GS1:37	GS1 AI 37 (Number of Units Contained)
GS1:90	GS1 AI 90 (Mutually Agreed)
GS1:91	GS1 AI 91 (Company Internal Information)
GS1:92	GS1 AI 92 (Company Internal Information)
GS1:93	GS1 AI 93 (Company Internal Information)
GS1:94	GS1 AI 94 (Company Internal Information)
GS1:95	GS1 AI 95 (Company Internal Information)
GS1:96	GS1 AI 96 (Company Internal Information)
GS1:97	GS1 AI 97 (Company Internal Information)
GS1:98	GS1 AI 98 (Company Internal Information)
GS1:99	GS1 AI 99 (Company Internal Information)

 **Note:** Although all of these types are supported, for this change only 10 (Lot) and 91 (Company-agreed, in this case the product barcode) will be used. However, adding these will accrue no additional development charge, as this list will




simply be stored as a list in the database, for reference.

8.2 Mobile Device Changes

The existing UDF functionality (styling.js, method CreateUDFields2) will be modified to support this change.

The following AIs will be supported by this extraction:

AI	Description	Data Format
00	Serial Shipping Container Code(SSCC-18)	18 digits - numeric
01	GTIN-14	14 digits - numeric
10	Batch Number	1-20 alphanumeric
11	Production Date	6 digits: YYMMDD
15	Sell by Date (Quality Control)	6 digits: YYMMDD
21	Serial Number	1-20 alphanumeric
240	Additional Product Identification	1-30 alphanumeric
37	Number of Units Contained	1-8 digits
90	Mutually Agreed Between Trading Partners	1-30 alphanumeric
91	Company Internal Information	1-30 alphanumeric
92	Company Internal Information	1-30 alphanumeric
93	Company Internal Information	1-30 alphanumeric
94	Company Internal Information	1-30 alphanumeric
95	Company Internal Information	1-30 alphanumeric
96	Company Internal Information	1-30 alphanumeric
97	Company Internal Information	1-30 alphanumeric
98	Company Internal Information	1-30 alphanumeric
99	Company Internal Information	1-30 alphanumeric

 **Note:** Although these types are supported, for this change only 10 (Lot) and 91 (Company Internal Information, in this case the product barcode) will be used. However, adding these will accrue no additional development charge, as this list will simply be stored as a list in the database, for reference.

These will be added as an object in the code, as follows:

- AI - the AI, a string ID.
- Min - the minimum length
- Max - the maximum Length
- Type - the type, values "A" - alphanumeric, "N" - numeric, "D" - date

This object will be used to look up the minimum and maximum lengths based on the AI provided.

The device will extract the required AI from the UDF field parameters and compare to this list to determine the length required and then create a pattern to extract the data. The pattern will be worked from the following example:

- `.*(?:?:^\\(|\\))`
- The AI, extracted from the UDF Field parameters.
- `\\)?(`
- The type, which will be based on the type of the AI. For "A" - alphanumeric - use "." (period). For any other ("N" - numeric, "D" - date) use "\\d"
- The length, which will be built from the min and max length values, separated by a comma if the max length property is populated and different to the min length property, surrounded in curly brackets, for example {1,20}, {6}, etc.
- `)).*`

For example

- ID "GS1:10" will extract 10 as the AI and lookup the length in a fixed array keyed on the AI, which will result in the pattern `.*(?:?:^\\(|\\))10\\)?(\\{1,20\\}).*` on the device.



- ID "GS1:91" will extract 91 as the AI and lookup the length in a fixed array keyed on the AI, which will result in the pattern `.*(?:^(?:\|)91)?(\{1,30\}).*` on the device.
- ID "GS1:15" will extract 15 as the AI and lookup the length in a fixed array keyed on the AI, which will result in the pattern `.*(?:^(?:\|)15)?(\d{6}).*` on the device.

The device will use the replace function to return just the matched data.

Therefore scanning the following (where "|" is the FNC1 character) and requesting 10 AI (the lot) will all result in the Lot number being extracted:

- 911408|1016274
- 1016274|911408
- 1016274

Scanning the following will not extract the lot number, as it is not contained in the data:

- 9114108

Keying in the following and requesting 10 AI (the lot) will all result in the Lot number being extracted:

- (10)16274
- (91)1408(10)16274
- (10)16274(91)1408

Keying in the following will not extract the lot number as it is not contained in the data:

- (91)1408

UDF Fields created by this function add a Barcode button (and are considered barcode-enabled) if the ACTION tag value is "B". This will be extended if the value is not "P" or "N".

For barcode-enabled fields (i.e. not ACTION "P" or "N"), data in the field will be cleared on entry and the device will move to the next field to enter, whether the value is keyed or scanned through the application scanner or an integrated physical barcode scanner.

On entry of a GS1-barcode-enabled field (i.e. not ACTION "P", "B" or "N"), the barcode value will be extracted immediately and replace the data in the field, using the pattern generated from the AI.

Validation of the field entered in this way (in this case, the Lot Number) need not be affected - no additional validation is required. However, it is recommended when setting up this specific Lot number field for this UDF configuration that this be set to a numeric only field, validating as numeric only.

So the process on the device will be as follows:

- The user is prompted to enter the product barcode.
- They use the scanner to scan "911408|1016274" (where "|" is the FNC1 character).
- When entered, the Lot data is extracted and the data in the field on the screen is changed to "16274".
- Clicking on the field again or the barcode button will blank the data entered, ready for another keyed or scanned entry.
- Scanning (or keying) a barcode without the data required (in this case lot, AI 10, for example (91)1408) will result in no value being extracted into the field on the screen, leaving it blank.
- Scanning (or keying) a barcode that extracts a non-numeric value in this field will result in an error when the user confirms entry of the field.



9 Appendix A: TEST PLAN

Test Script / Scenario Reference	<i>UDF GS1 Barcode Extraction</i>	Call Number(s): 344085 SCR-344060-05
Test Script / Scenario Description	<i>Testing GS1 barcode scanning.</i>	PASS / ISSUES / FAIL
Menu Access	<i>N/A</i>	
Pre-requisites	<i>A system configured as Oak Furniture Land.</i>	Tested By:
Test Objective	<i>To test that: GS1-barcode AIs may be configured against UDF and; GS1 barcodes may be scanned and extracted as required by the mobile device application.</i>	Date:

Step	Action	Result	Remarks	P/F
1	Admin			
1.01	Add a new UDF configuration (suggesting name "Product Barcode", type Container UDF, for the Site). Create a new field.	Text, Text Area and Numeric fields may be configured with a GS1 Barcode type. All others may not.		
1.02	Create a Numeric field with a GS1 barcode type (suggesting id LOT_NUMBER, action GS1:10 - Batch). Set the Validation field (to .*{5}). Save the field and the form.	No errors.		
1.03	Open the new configuration. Select the new field.	The field is configured as it was originally set.		

Step	Action	Result	Remarks	P/F
2	Mobile Device			
	<i>Configure Container UDF for the site in the format required by the customer. Create a job with several containers (items). Create GS1 barcodes in the format as required by the customer, and some that do not contain a batch (AI 10). Complete these tests with a device that has an integrated barcode scanner.</i>			
2.01	Log on to the device, start and arrive to the job, and long-press against a container.	The option for Product Barcode is present.		
2.02	Complete a container (with the <i>Deliver</i> option).	The Product Barcode UDF screen is displayed, asking for a Product Barcode and a Photo. The product		



		barcode has a barcode button. The Product Barcode is highlighted immediately.		
2.03	Scan a correct product barcode.	The lot number is extracted and placed in the field.		
2.04	Click the field again.	The barcode value is removed		
2.05	Key in a valid product barcode	The lot number is extracted and placed in the field.		
2.06	Click the Barcode button	The app displays a camera window for scanning a barcode.		
2.07	Scan a correct product barcode.	The lot number is extracted and placed in the field.		
2.08	Repeat the test, scanning a Product Barcode without a Batch number.	The scan is accepted, but no Lot number is extracted.		
2.09	Scan a correct product barcode and click Save .	The container list is displayed, and this item is removed.		
2.10	Complete another container. On the Product Barcode screen, do not scan a lot number, but instead take a photo.	The photo is taken and a new Photo bar is present for another photo if required.		
2.11	Click Save .	The container list is displayed, and this item is removed.		
2.12	Complete another container. On the Product Barcode screen, do not scan a lot number, or take a photo. Click Save .	The container list is displayed, and this item is removed.		
2.13	Complete the job. Check Admin.	All photos and UDF are displayed as expected.		



10 Appendix B: Quote & Document References

Cost Details				
Activity	Estimate No. of Days	No. of Days	Rate per Day (?)	Cost (? Exc. VAT)
Requirements	0.00	0.00	750	?0.00
Change Request Evaluation	0.00	0.00	750	?0.00
Functional Specification	1.00	1.00	750	?750.00
Technical Specification	0.00	0.00	750	?0.00
Development	4.00	4.00	750	?3,000.00
Testing and Release	0.50	0.50	750	?375.00
Implementation	0.25	0.25	750	?187.50
Project Management	0.25	0.25	750	?187.50
TOTAL	6.00	6.00		?4,500.00

Estimate excludes training, release to live and go live support.

B.1 References

Ref No	Document Title & ID	Version	Date
1	REQ 344060 Oak Furniture Land Solution Design	0.8	24/07/2017

B.2 Glossary


Term	Definition
EPOD	Electronic Proof of Delivery. The OBS EPOD system is <i>CALIDUS</i> ePOD.
<i>CALIDUS</i> eSERV	The OBS mobile system to complete Service functionality in the field. This is part of the <i>CALIDUS</i> ePOD system.
PDA	The mobile device on which the C-ePOD system will run in the field. This can be a Phone, EDA or industrial PDA, running Android.
DAL	Data Access Layer. A mechanism for accessing data by the system that is removed from the application, allowing for simplified access and providing protection to the data, as only approved DAL methods can be used to modify it.
GPS	Global Positioning System. A mechanism of retrieving accurate positioning information in the form of Latitude and Longitude (Lat-Long) co-ordinates from a device.
GPRS, 3G, HSDPA, Data Service	All terms referring to mobile device network connectivity, and the speed at which the device connects to the internet.

B.3 Authorised By

Matt Turner OBSL Account Manager _____

Louis Merrett Customer Representative _____

Sample Screen

 **Note:** The pop-up screen displayed will be functionally identical to the Container (Item) UDF pop-up screen (displayed for this customer when entering a lot number for each item scanned. The sample screen above shows this screen configured for Lot Number entry. For this change, the configuration is expected to show:

- Reason for failure - a drop-down list
- Return # - a numeric entry box
- Card # - a numeric entry box

However, any fields may be configured on this form.



If a job is confirmed cancelled and all additional details are entered (or none are required), the device will show the Job List again with the cancelled job removed from the list.

10.1 Scope

This change will be applied to system version 3.X.



11 Set-up

11.1 Pre-requisites

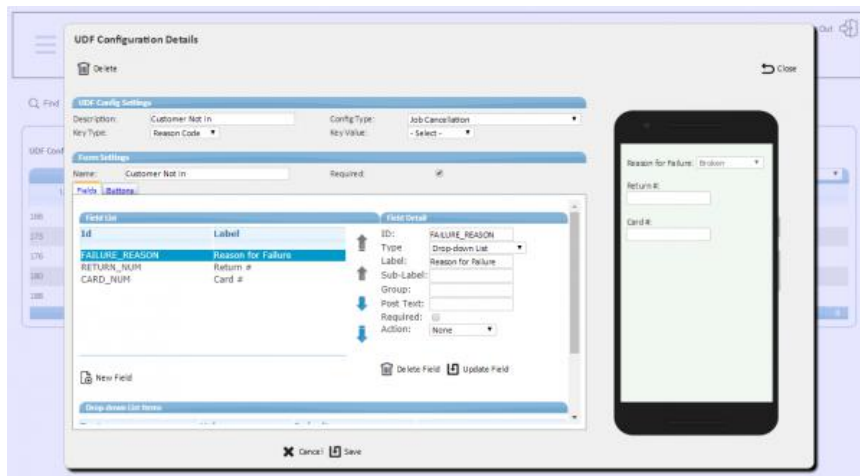
11.2 Menu Structure

11.3 Data

All cancelled jobs for the Site (or for a specific reason code) will be configured to require entry of failure reasons, return and card numbers, through the configuration of Job Cancellation UDF, as follows:

```
<FORM NAME="Customer Not In" REQUIRED="N">
  <FIELD ID="FAILURE_REASON">
    <TEXT>Reason for Failure</TEXT>
    <FORMAT>DDL</FORMAT>
    <REQUIRED>N</REQUIRED>
    <ACTION>N</ACTION>
    <ITEMS>
      <ITEM CODE="BR" DEFAULT="N" PHOTO_COUNT="0">Broken</ITEM>
      <ITEM CODE="RF" DEFAULT="N" PHOTO_COUNT="0">Refused</ITEM>
    </ITEMS>
  </FIELD>
  <FIELD ID="RETURN_NUM">
    <TEXT>Return #</TEXT>
    <FORMAT>N</FORMAT>
    <REQUIRED>N</REQUIRED>
    <ACTION>N</ACTION>
  </FIELD>
  <FIELD ID="CARD_NUM">
    <TEXT>Card #</TEXT>
    <FORMAT>N</FORMAT>
    <REQUIRED>N</REQUIRED>
    <ACTION>N</ACTION>
  </FIELD>
</FORM>
```

This is configured through the UDF Configuration screen on the Admin system:



Admin UDF Configuration, showing Job Cancellation reasons



12 Functional Description

12.1 Admin UDF Configuration Screen

The UDF Configuration screen (udf_config.aspx) will be modified for this change.

The drop-down list of Config Types will be extended (through the database List Items) to add the following values:

Key	Description
JOBCANC	Job Cancellation
CONTCANC	Container Cancellation
CONTCLAUSE	Container Clause
PRODCANC	Product Cancellation
PRODQTY	Product Quantity Change
SERVCANC	Service Cancellation
SERVITEMCANC	Service Item Cancellation

Note: Although all of these types are supported, for this change only Job Cancellation will be used. However, adding these will accrue no additional development charge, as this list will simply be stored as a list in the database, for reference.

In the instance where one of these Config Types are selected, the Key Types allowed are:

- "S" - Site
- "J" - Job Group
- "R" - Reason Code - available only for these config types.

In the instance where Reason Code is selected, a key value drop-down list will be provided, showing the reason codes available for this configuration. This drop-down list will show the reason code and description in the drop-down list selection, and will store the value of the selection as the reason code itself. Different reason code types will be selected based on the Config Type:

- Job-level reason codes (type JOB) will be selected for JOBCANC and SERVCANC config types.
- Detail-level reason codes (type DET) will be selected for SERVITEMCANC, CONTCANC, PRODCANC and PRODQTY config types.
- Clause codes (type CLA) will be selected for the CONTCLAUSE config type.

When Reason Code key values are saved to the table, the key value will be set to the Site ID and the Reason Code selected, delimited by a vertical bar character ("|"). A Reason Code must be selected - if not, an error should be displayed when attempting to save the UDF configuration being edited/added.

12.2 Mobile Device Changes

The Exception screen (Cancellation.js) will be modified to handle the new UDF configurations.

When performing an exception of any type, the Cancellation process is called with a parameter (pType) indicating the type (for example, Job Cancellation, Container Clausuring, etc). This will be used to determine the UDF configuration to obtain.

The types are:

- Job Cancellation - JOB or JOBS
- Service Cancellation - SERVICE_JOB
- Service Item Cancellation - SERVICE_ITEM
- Product Cancellation - PRODUCT
- Container Cancellation - CONTAINER



- Container Clause - CLAUSE_CONTAINER
- Product Quantity Change - CHANGE_QTY

The PDA_UDF_CONFIG class will be modified to allow selecting by reason code, in preference to Site and Job Group.

On confirming an exception, the process will check if there is a UDF configuration for this cancellation type, Site, Job Group and Reason Code selected. If configurations are found, one will be selected in a hierarchy as follows:

- If a configuration is found for the selected reason code, this will be used.
- If a configuration is found for the job group, this will be used.
- If a configuration is found for the site, this will be used.

If no UDF configuration is found, then the exception process will confirm as now.

If a UDF configuration is found, a pop-up screen (functionally identical to the Container and Product UDF entry screens) will be displayed, requesting the entry of the UDF configuration found.

Save and **Back** buttons will be provided.

The **Back** button will return the user to the cancellation screen - nothing will be saved or cancelled.


The **Save** button will validate the form entry using the standard validation criteria, in the following conditions:

- If the UDF configuration is marked as required, then all required fields in the UDF must be entered.
- If the UDF configuration is not marked as required, then the user may skip entry of the fields.

If the validation fails, the standard functionality will display the errors and force the user to enter all required fields, while highlighting them. The UDF screen will not close.

If the validation passes, the UDF entered will be saved in the following fields, based on the exception type:

- For Job Cancellation, the UDF is saved in the Job UDF field (EPOD_JOB.EPL_UDF_JOBDETS)
- For Container Cancellation, the UDF is saved in the Container UDF field (EPOD_CONTAINER.EPL_UDF)
- For Container Clause, the UDF is saved in the Container UDF field (EPOD_CONTAINER.EPL_UDF)
- For Product Cancellation, the UDF is saved in the Product UDF field (EPOD_PRODUCT.EPL_UDF)
- For Product Quantity Change, the UDF is saved in the Product UDF field (EPOD_PRODUCT.EPL_UDF)
- For Service Cancellation, the UDF is saved in the Job UDF field (EPOD_JOB.EPL_UDF_JOBDETS)
- For Service Item Cancellation, the UDF is saved in the Service Diagnosis UDF field (EPOD_SERVICE.EPL_UDF_DIAGNOSIS)

 **Note:** Although all of these types are supported, for this change only Job Cancellation will be used. However, adding these will accrue no additional development charge.




13 Appendix A: TEST PLAN

Test Script / Scenario Reference	<i>UDF for Cancelled Jobs</i>	Call Number(s): 344088 SCR-344060-03
Test Script / Scenario Description	<i>Testing UDF is prompted for at Exceptions</i>	PASS / ISSUES / FAIL
Menu Access	<i>N/A</i>	
Pre-requisites	<i>A system configured as Oak Furniture Land.</i>	Tested By:
Test Objective	<i>To test that: UDF can be configured for Exceptions and; the mobile device prompts for and validates this as required.</i>	Date:

Step	Action	Result	Remarks	P/F
1	Admin			
1.01	Add a new UDF configuration.	The config type can be sent to one of the new types specified here.		
1.02	Select the new config types and check the key type.	Each of the new config types allow a key type value of Reason Code.		
1.03	Select the config types not added by this change and check the key type.	The existing config types do not allow a key type value of Reason Code.		
1.04	For each of the new config types, select key type Reason Code and check the Reason Codes displayed.	Job-level reason codes are displayed for Job and Service Cancellation config types. Detail-level reason codes are displayed for Service Item, Container and Product Cancellation, and Product Quantity Change config types. Clause codes are displayed for the Container Clause config type.		
1.05	Save a UDF configuration for Job Cancellation, for a specific reason code. Select it from the table.	The saved values are displayed as entered.		
1.06	Change the saved configuration to each config type and key level and value. Select it from the table.	The saved values are displayed as entered.		

Step	Action	Result	Remarks	P/F
2	Mobile Device			



	 Note: This test is for the functionality required by the customer for this change, namely Job Cancellation. Ensure that 3 jobs for a job group are created on a load ready for completion. Ensure that the system has a Job Cancellation configuration for the Site and this Job Group (not required entry) and a specific Reason Code (required entry). Create another job on the load with a different job group without Job Cancellation UDF configured.			
2.01	Select the first of the jobs for the Job Group configured for Job Cancellation UDF. Select to Cancel the job, from the Job List or Job Details screens.	The Job Cancellation screen is shown.		
2.02	Select the configured reason code and click OK .	The Job Cancellation UDF configuration for the Reason Code will be displayed.		
2.03	Without entering any details, click Save .	The screen should warn that the details are required to be entered.		
2.04	Click Back .	The Job Cancellation screen is shown.		
2.05	Click OK and enter the required details. Click Save . Check Admin.	The job should be cancelled. The UDF entered should be present on the job.		
2.06	Select the second of the jobs for the Job Group configured for Job Cancellation UDF. Select to Cancel the job, from the Job List or Job Details screens. Select a reason code not configured for Job Cancellation UDF and click OK .	The Job Cancellation UDF configuration for the Job Group will be displayed.		
2.07	Without entering any details, click Save . Check Admin.	The job should be cancelled. The UDF should be present on the job with no details.		
2.08	Select the third of the jobs for the Job Group configured for Job Cancellation UDF. Select to Cancel the job, from the Job List or Job Details screens. Select a reason code not configured for Job Cancellation UDF and click OK .	The Job Cancellation UDF configuration for the Job Group will be displayed.		
2.09	Enter details, click Save . Check Admin.	The job should be cancelled. The UDF should be present on the job with the details entered.		
2.10	Select the fourth job. Select to Cancel the job, from the Job List or Job Details screens. Select a reason code not configured for Job Cancellation UDF and click OK .	The Job Cancellation UDF configuration for the Site will be displayed.		
2.11	Enter details, click Save . Check Admin.	The job should be cancelled. The UDF should be present on the job with the details entered.		



14 Appendix B: Quote & Document References

Cost Details				
Activity	Estimate No. of Days	No. of Days	Rate per Day (?)	Cost (? Exc. VAT)
Requirements	0.00	0.00	750	?0.00
Change Request Evaluation	0.00	0.00	750	?0.00
Functional Specification	0.75	0.50	750	?375.00
Technical Specification	0.00	0.00	750	?0.00
Development	3.25	3.25	750	?2,437.50
Testing and Release	0.50	0.50	750	?375.00
Implementation	0.25	0.25	750	?187.50
Project Management	0.25	0.25	750	?187.50
TOTAL	5.00	4.75		?3,562.50

Estimate excludes training, release to live and go live support.

B.1 References

Ref No	Document Title & ID	Version	Date
1	REQ 344060 Oak Furniture Land Solution Design	1.0	24/07/2017

B.2 Glossary

Term	Definition
EPOD	Electronic Proof of Delivery. The OBS EPOD system is <i>CALIDUS</i> ePOD.
<i>CALIDUS</i> eSERV	The OBS mobile system to complete Service functionality in the field. This is part of the <i>CALIDUS</i> ePOD system.
PDA	The mobile device on which the C-ePOD system will run in the field. This can be a Phone, EDA or industrial PDA, running Android.
DAL	Data Access Layer. A mechanism for accessing data by the system that is removed from the application, allowing for simplified access and providing protection to the data, as only approved DAL methods can be used to modify it.
GPS	Global Positioning System. A mechanism of retrieving accurate positioning information in the form of Latitude and Longitude (Lat-Long) co-ordinates from a device.
GPRS, 3G, HSDPA, Data Service	All terms referring to mobile device network connectivity, and the speed at which the device connects to the internet.

B.3 Authorised By

Matt Turner	OBSL Account Manager	_____
Louis Merrett	Customer Representative	_____

