


This guide covers creating a new WCS Patch, using the automated facilities available through the new page creation utilities, the WCS PATCH template and variables to pre-set titles and categories.

## Creating a new WCS PATCH

 **Note:** you must be logged in.

Go to the main page and click on [Create New Pages from Templates](#)

Enter your WCS PATCH ID in the correct area of the screen e.g. UP250715

Click **Create New WCS PATCH**

The system will take you to the page with everything you need for creating a WCS PATCH, editing in source mode.

You can edit in source mode, or you can flip to visual editing. Either:

- Click *Create* instead of *Create Source* at the top
- Click the pencil icon and select *Visual Editing*.

You will then be editing in Visual Editor.

### Source Editing

Change the following at the top of the page

- `#vardefine:SystemVersion` - the system and version e.g. WCS 3.4
- `#vardefine:BuildNo` - the patch ID e.g. UP250715
- `#vardefine:ConnectedTo` - the system that the WCS is connected to e.g. WMS, CTMS

This will set the title, system, version, and Build number automatically from what was entered. If you have Preview turned on, it will change a few seconds after you make the changes.

You can then continue editing, adding rows to the different sections, adding or removing unwanted sections, etc.

When complete, enter an editing summary at the bottom of the page and click **Save Changes**.

### Visual Editing

Under the header, greyed out, there are 3 variables, used by the page for the titles, version and (importantly) the categorisation of the page.

- `#vardefine:SystemVersion`
- `#vardefine:BuildNo`
- `#vardefine:ConnectedTo`

Click on the variable to change and click the **Edit** button - an edit popup will show. Enter the value you want here:

- `#vardefine:SystemVersion` - the system and version e.g. WCS 3.4
- `#vardefine:BuildNo` - the patch ID e.g. UP250715
- `#vardefine:ConnectedTo` - the system that the WCS is connected to e.g. WMS, CTMS

This will set the title, system, version, and Build number automatically from what was entered. It won't change immediately - it will change when you save the page.

You can then continue editing, adding rows to the different sections, adding or removing unwanted sections, etc.

When complete, you can click **Save Page**. You will be prompted to enter an editing summary - enter one and click **Save Page**.

### Sections

The programs included in the patch should be added to the Release Components section.

- Ensure that the version numbers of each program are added.
- Any programs not included can be removed from the section (the row deleted).
- If there is a database script, add the ID of the script here (no version is required).
- If there are multiple scripts, add them here.

The cases resolved in this release should be added to the Issues/Changes section.

- Internal Ref is DevOps reference
- External Ref is Salesforce reference
- Description should be the description of what is resolved.

Any WCS database changes or additional rules should be added here:

- For database changes, this is optional. You can add the table and field name, the default value and a description of what this is for in the notes. You may reference the Internal Reference above.
- For Rule changes, list the rule level (system, Warehouse, User Group, etc), the rule name, the default value, and the description of the rule.

The Installation Instructions section does not necessarily need changes. However, if your release includes WMS or CTMS releases, and the ER/PATCH number is known, please enter it here for cross reference. If you have release notes created for this ER or PATCH, then include them as a link e.g. `[[ER CTMS 047-001]]` in source editing or `CTRL-K ER CTMS 047-001` in visual editing.

## Result

Your page will be created. The categories will be set from the variables entered as well. Assuming we entered the following

- #vardefine:SystemVersion - WCS 3.4
- #vardefine:BuildNo - UP250715
- #vardefine:ConnectedTo - WMS

The title will default to:

- **Software Release - WCS 3.4 for WMS**
- BUILD NUMBER UP250715

The categories will default to:

- WCS WMS PATCH

Now, if you go to category "WCS", you will see the sub categories

- WCS WMS PATCH
- WCS CTMS PATCH

In this example UP250715 will exist in WCS WMS PATCH. Example below:

WCS? (2 C, 4 P)

WCS CTMS PATCH? (2 P)

WCS WMS PATCH? (6 P)

Note that these patch categories also exist under the parent system's categories:

- WCS WMS PATCH -
  - WMS? (3 C, 9 P)
  - WCS WMS PATCH? (6 P)
  - WMS ER? (14 C, 1,683 P)
  - WMS PATCH? (36 P)
- WCS CTMS PATCH -
  - CTMS? (4 C, 27 P)
  - CTMS ER? (23 C, 2,557 P)
  - CTMS PATCH? (36 P)
  - CTMS SAR ER? (2 P)
  - WCS CTMS PATCH? (2 P)

# Contents

- 1 Setting up WCS for CTMS.....1**
  - 1.1 APP\_QUEUE.....1
  - 1.2 APP\_REC.....1
  - 1.3 APP\_AGENT.....1
  
- 2 WCS Build and Release Process.....2**
  - 2.1 Scope.....2
  - 2.2 Building the programs.....2
  - 2.3 Building the Release.....5
  - 2.4 Releasing.....6
  - 2.5 Sample Release Note.....7
  
- 3 Category:WCS CTMS PATCH.....8**
  
- 4 WCS Release Procedure.....9**
  - 4.1 Introduction.....9
  - 4.2 Release admin.....9
  - 4.3 Release Procedure.....10
  
- 5 Category:WCS WMS PATCH.....18**

# 1 Setting up WCS for CTMS

This page shows the basic interface tables that should be set up to enable WCS within CTMS. Note that OAQ tables and functionality must also be setup - this is not covered here, but should already be present in any CTMS database.

## 1.1 APP\_QUEUE

ID	AGENT	RECEIVER	ACTION	STATE	DISABLE_FOR_NEXT_LISTENER_RUN	JOB_ID	HANDLER	HANDLER_DEF
QCM1	AG_AUTO	MTS		L		1845	L	L
QMC	AG_AUTO	WCS		X				

## 1.2 APP\_REC

REC_TYPE	REC_NAME	QUEUE_ID	APP_PROCESS	ACTIVE
405	TY_WCS_SUPP_TRIP_ACCEPT	QMC	dp_rdt_auto.send_wcs_supp_trip_accepted	Y
404	TY_WCS_ORD_PREADV	QMC	dp_rdt_auto.send_wcs_ord_preadvice	Y
804	TY_WCS_ORD_CONF	QCM1	dp_rdt_auto.rcvd_wcs_ord_conf	Y
421	TY_WMS_LOC_CD	QMC		Y
821	TY_WCS_LOCCHECK	QCM1	dp_rdt_internal.rcvd_wcs_loccheck	Y
442	TY_TMS_TRIP_LOAD	QMC	dp_rdt_fast_load.send_wcs_trip_load	Y
441	TY_TMS_ITEM_LOAD	QMC	dp_rdt_fast_load.send_wcs_item_load	Y
432	TY_WMS_TRIP_PREADV	QMC	dp_rdt_preadvice.send_wcs_trip_preadv	Y
431	TY_WMS_MANIFEST_PREADV	QMC	dp_rdt_preadvice.send_wcs_manifest_preadv	Y
841	TY_WCS_FAST_LOAD_CONF	QCM1	dp_rdt_fast_load.rcvd_wcs_fast_load_conf	Y
833	TY_WCS_COMP_UNLOAD	QCM1	dp_rdt_fast_unload.rcvd_wcs_comp_unload	Y
832	TY_WCS_UNPLANNED_LOAD	QCM1	dp_rdt_fast_unload.rcvd_wcs_unplanned_load	Y
831	TY_WCS_FAST_UNLOAD	QCM1	dp_rdt_fast_unload.rcvd_wcs_fast_unload	Y
851	TY_WCS_ITEM_ENQUIRY	QCM1	dp_rdt_auto.rcvd_wcs_item_enquiry	Y
472	TY_WCS_NEW_DEPOT	QMC	dp_rdt_auto.send_wcs_new_depot	Y
471	TY_WCS_DU_TYPES	QMC	dp_rdt_auto.send_wcs_media	Y
451	TY_WCS_ITEM_RESPONSE	QMC		Y
433	TY_WMS_MANIFEST_DELETE	QMC	dp_rdt_preadvice.send_wcs_manifest_delete	Y
861	TY_WCS_TRIP_ENQUIRY	QCM1	dp_rdt_auto.rcvd_wcs_trip_enquiry	Y
461	TY_WCS_TRIP_RESPONSE	QMC	dp_rdt_auto.send_wcs_trip_enquiry	Y
473	TY_WCS_ASSET_ORIGIN	QMC	dp_rdt_auto.send_asset_origin	Y
852	TY_WCS_ASSET_CREATION	QCM1	dp_rdt_auto.rcvd_wcs_asset_creation	Y

## 1.3 APP\_AGENT

Add your depot and link to agent above

DEPOT	AGENT	Q_SCHEMA	PRIMARY_AGENT
DHLMIDD	AG_AUTO	MTS_OWNER	N



## 2 WCS Build and Release Process

The objective of this document is to clearly describe the steps required to build and release programs to the client's site for an update to Calidus 3pl-Mobile (the WCS).

### 2.1 Scope

This process applies to all sites that use Calidus 3pl-Mobile and require releases, but do not utilise an automated release mechanism.

Where the document references updating the Supimix call logging system to particular statuses, the standard Supimix updating procedure applies.

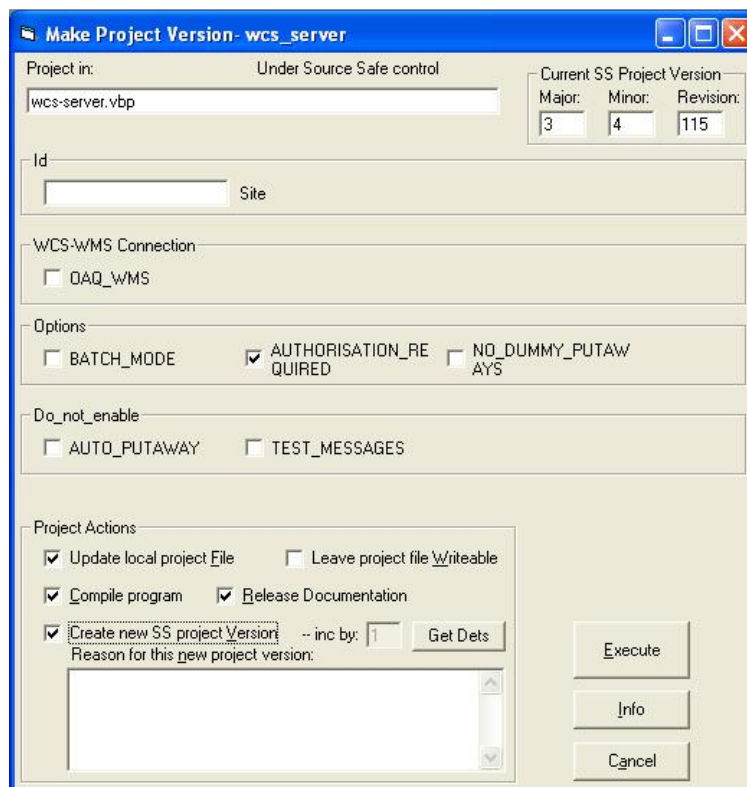
#### 2.1.1 Responsibility

It is the responsibility of the person completing the testing that the programs be released out to appropriate representatives.

## 2.2 Building the programs

Once the changes for a particular log/number of logs are completed, the affected programs are built on the test server, using a utility for the purpose. The utility, Version Maker, is run directly from the programming environment. The interface presented depends on the program being built:

WCS:



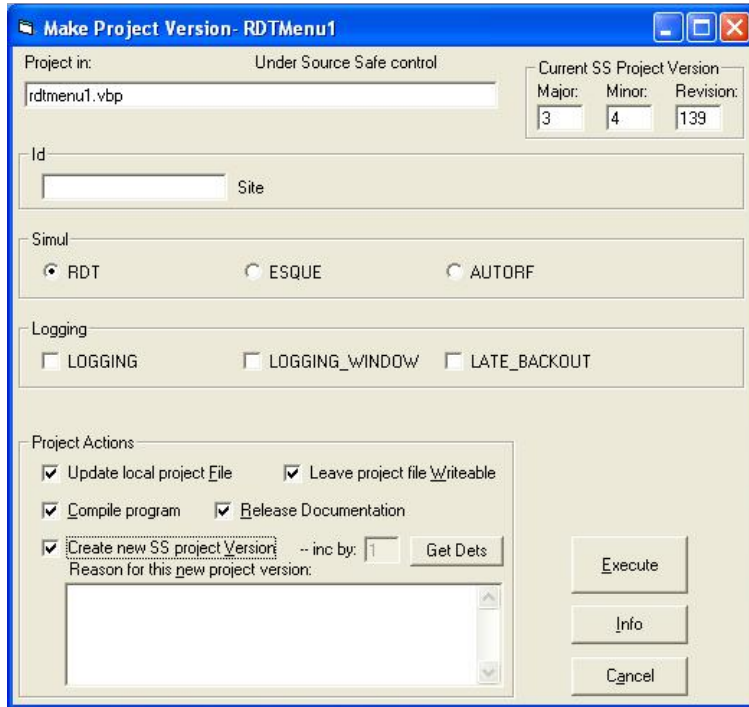
The screen shot shows the settings needed for a build of WCS-Server.exe. To build WCS-Server\_OAQ repeat the call with OAQ\_WMS ticked (after saving version number change to the .vbp file). Normally the same version number is



wanted for both so ?Create new SS project version? is un-ticked on the OAQ call.

The build is normally preceded by a ?Get Dets? (see button above). This extracts from VSS details of the changes included in the build (delete any duplicates at this stage). This information is automatically written to the release documentation.

RDT:

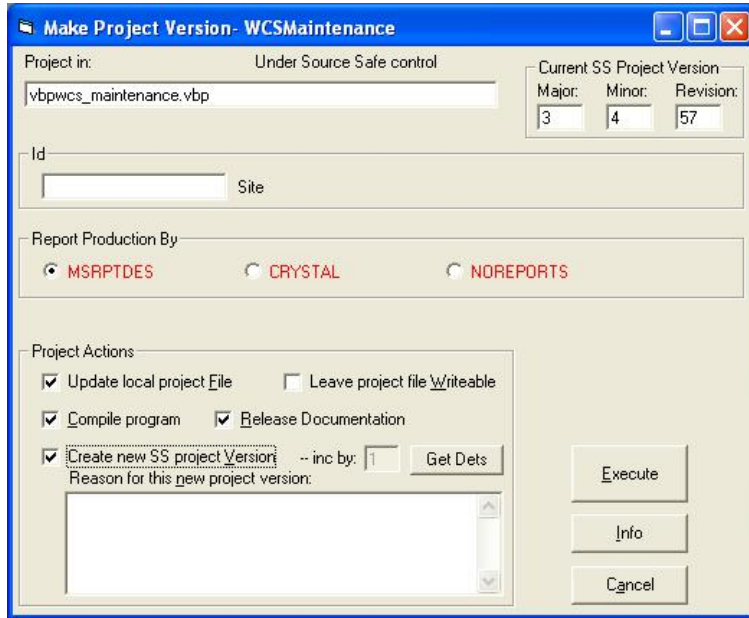


The screen shot shows the settings required to build RDTMenu1.exe. To build Debug.exe click ESQUE and tick LOGGING and LATE\_BACKOUT Normally the same version number is wanted for both so ?Create new SS project version? is un-ticked on the Debug call.

The build is normally preceded by a ?Get Dets? (see button above). This extracts from VSS details of the changes included in the build. This information is automatically written to the release documentation.

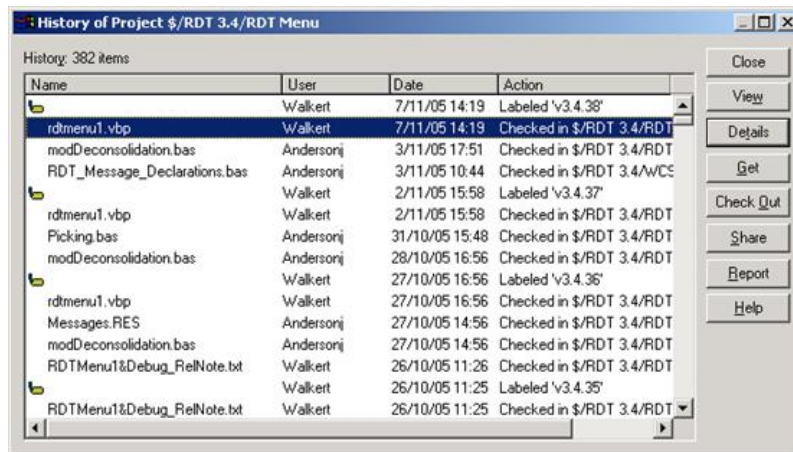
WCS Maintenance:





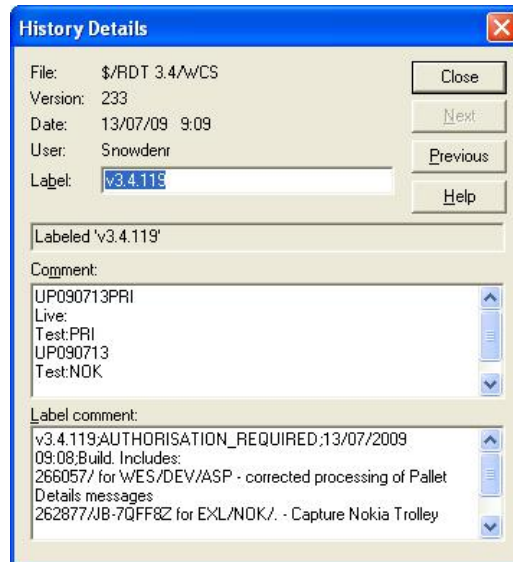
The build is normally preceded by a ?Get Dets? (see button above). This extracts from VSS details of the changes included in the build. This information is automatically written to the release documentation

Creating a new SS project version automatically labels the release in the source control environment.



Each label contains the build description, plus the parameters used to create the build:





The comment should be updated when the build is sent to the client, showing the sites to which the program has been released.

The programs are then moved to a test area and tested.

Update the Status of the Supimix call to ?Test?.

The test will be on a defined test machine, linking to a suitable Calidus-3pl test environment.

Once tested, A Proof of Testing document will have been created in the standard Test Logs directory, and the Supimix call will have been updated to Tested.

## 2.3 Building the Release

Once the build has been approved for release, all the programs concerned are moved to a releases area.

This releases area is in the network area:

```
P:\RDT\Development\_Installers
```

Under this area, there is a "Releases In Progress" area - the programs should be copied in here while they are being put together in a release.

**Note:** If the database, Server or RDT process has changed, all three must be released at the same time, to prevent potential issues when a client doesn't release all available patches.

A release notes file is also created, an example of which is listed in Appendix A

It is recommended that the "Changes since last build" section is created by copy and pasting the release notes generated automatically by Version Maker. These will probably contain duplicate lines which should be deleted.

The programs to be released and the release notes should now be included into a zip file, named as follows:

```
UP<YYMMDD>{<CLIENT>}{<SEQUENCE>}.zip
```

CLIENT is optional and should only be used if the release is to a specific client or site only. This is the site from the Supimix call (e.g. CHE, CHE3). Upgrades should only be released to specific clients if:

- The problem requires immediate fixing and it is impractical to upgrade to the latest version, or;



- The site is on a bespoke version of the WCS

SEQUENCE is optional, used only if several releases are made on the same day.

The naming convention for release notes is <RELEASE> relnotes.txt.

When the patch is built, update the status of the Supimix call to 'Ready for Release'. Update the Patch field with the name of the patch file.

## 2.4 Releasing

**Note:** The following is a standard release process that should be followed for all new clients. There are some existing clients that require the patch to be released via email.

For a list of current clients and their release mechanisms, see Appendix B

FTP the patch out to clients? identified machine. Existing clients have shortcuts to release to specific machines.

Send an email to the general WCS list and the defined representatives of the specific client, and copy it to the members of the OBS WCS team. The email should identify the release name, and the place the release can be found, and include a copy of the release note.

Copy the release and release note to the client area in the releases area

P:\RDT\Development\\_Installers

Under this area there are specific company areas. For all new installations, this will be the company from the call (e.g. EXL)

Under this area, the site or client is specified. For all new installations, this will be the site from the Supimix call (e.g. CHE, CHE3)

If the release is for all clients in a company (and the company has several sites), the release can be placed in a non-site-specific directory, usually above the site-specific areas. For example:

P:\RDT\Development\\_Installers

```

\EXL                - Company area
\_Sites             - Releases for all sites
\COV                | Site areas
\CHE                |
\CN-ATH            |

```

Update the SourceSafe label to show that the release has been made and which sites have it in test.

Once this is complete, update the status of the Supimix call to ?Acceptance Test? (5), sub-status ?Complete? (70).

For instructions on releasing patches directly onto client servers, please see the C3PL-M Installation Guide, referenced as item 1 in Appendix C



## 2.5 Sample Release Note

See also [Creating a WCS Patch](#)

Files included in release, plus versions:

Program	Version
rdt1_struct.mdb	ss v107
RDTMenu1.exe	3.4.30
Debug.exe	3.4.30
WCS-Server.exe	3.4.23
WCSMaintenance.exe	3.4.15

Changes since last build:

Log Number	Programs	Description
198788	RDTMenu1/ WCS-Server/ WCS Maintenance	Deconsolidation and Despatch development
206084	WCS-Server	Fix to creation of picking containers when short picking; fix to receiving stock drip feed messages.

Installation Instructions:

Stop all RDTs running on the system.

Stop the WCS server on the TEST system.

Stop all WCS Maintenance sessions accessing the database

Make a backup copy of the old program, if required.

Copy the released versions of this program to the correct area on the TEST machine,

normally C:\Program Files\Warehouse Control Server

If the database structure has been released to you, the database should be converted as described in the WCS Installation guide.

Restart the programs.

Note: There are WMS portions of some of these changes. Please check WebRelease for:

198780/ML-6C2EZD

198790/ML-6C9BKD

198776/ML-6C2DWD



### 3 Category:WCS CTMS PATCH



# 4 WCS Release Procedure

## 4.1 Introduction

The purpose of this document is to document the release process for WCS

## 4.2 Release admin

### 4.2.1 Release Spreadsheet

The currently released versions of the WCS system can be found in:

WCS Release List.xlsm

The spreadsheet contains a list of all the packages available for release, the versions of the RDT, WCS and Maintenance EXE's and the rdt1 (RDB) and log/log1 (LDB) Database versions within each zip:

Release	RDT	WCS	MNT	RDB	LDB	DEP
UP190712	3.4.414	3.4.402	3.4.110	305	3	
						414
UP190718	3.4.415	3.4.403	3.4.110	306	3	
UP190724	3.4.416	3.4.404	3.4.110	306	3	
UP190806	3.4.417	3.4.405	3.4.110	307	3	Oracle
UP190815	3.4.418	3.4.405	3.4.110	307	3	

It also contains a list of each log - with a description and functional area - contained within the zip/release:

Release	RDT	WCS	MNT	RDB	LDB	DEP	Client	Ref	Desc
							Hallets Retail	358288	Receipt Printing Issue
UP190712	3.4.414	3.4.402	3.4.110	305	3		Moran Logistics	358352	WCS disconnection error
							Century Logistics	358359	Re-Logon Issue
						414	Cert	358110	Receipt Issues
UP190718	3.4.415	3.4.403	3.4.110	306	3		Century Logistics	357245	Pick Order From Pick Wave
							DHL Arthouse	358577	Blind Receipt changes
							Cert	357560	WCS Group Setting Issue
UP190724	3.4.416	3.4.404	3.4.110	306	3		Cert	358673	Inbound receipt Max Intake Life
UP190806	3.4.417	3.4.405	3.4.110	307	3	Oracle	Century Logistics	359143	Add UOM display on Picking
UP190815	3.4.418	3.4.405	3.4.110	307	3			358314	Carriage Return in barcode
								359341	Change DAMAGES Func to HOLD Func

For each version, an "L" (Live) and "T" (Test) will be in the appropriate row/column for the client:

Release	RDT	WCS	MNT	RDB	LDB	DEP	Client	Ref	Desc
							Hallets Retail	358288	Receipt Printing Issue
UP190712	3.4.414	3.4.402	3.4.110	305	3		Moran Logistics	358352	WCS disconnection error
							Century Logistics	358359	Re-Logon Issue
						414	Cert	358110	Receipt Issues
UP190718	3.4.415	3.4.403	3.4.110	306	3		Century Logistics	357245	Pick Order From Pick Wave
							DHL Arthouse	358577	Blind Receipt changes
							Cert	357560	WCS Group Setting Issue
UP190724	3.4.416	3.4.404	3.4.110	306	3		Cert	358673	Inbound receipt Max Intake Life
UP190806	3.4.417	3.4.405	3.4.110	307	3	Oracle	Century Logistics	359143	Add UOM display on Picking
UP190815	3.4.418	3.4.405	3.4.110	307	3			358314	Carriage Return in barcode
								359341	Change DAMAGES Func to HOLD Func



Each time a release is made, the L/T will be moved to the appropriate row.

## 4.2.2 Release Directories

The following directories are relevant to a WCS release:

projects\Releases\WCS\WMS\Release%20ZIPs\|spekefs2012\projects\Releases\WCS\WMS\Release ZIPs

Contains the ZIP files which are copied to the sites and released.

projects\Releases\WCS\WMS\Release%20Notes\|spekefs2012\projects\Releases\WCS\WMS\Release Notes

Contains release notes with details of the changes made inside each release.

projects\Releases\WCS\WMS\|spekefs2012\projects\Releases\WCS\WMS

Contains sent emails of Release Notes generated from the XLS

projects\Releases\WCS\WMS\Release%20DBs\|spekefs2012\projects\Releases\WCS\WMS\Release DBs

Contains backup versions of the rdt1 and log databases

Note: These Dir's also exist for TMS, replacing WMS with TMS.

## 4.3 Release Procedure

### 4.3.1 Identify the required zip/package

Check the Release XLS to find the requested Supimix references and cross reference this with the current T/L row for the client to see if the client requires a release. Check all Supimix references and make a note of the highest i.e. the latest package that contains all the required references.

**NOTE:** If the UPxxx package is in red text in the spreadsheet, then it means a significant bug has been found in that release and it should not be released - in this instance, use the next non-red package where this would have been fixed.

Make a note of both the current ZIP version and the version to be released.

### 4.3.2 Check if Log database release required.

projects\product\WCS\All Projects\Support\|spekefs2012\projects\RDT\All Projects\Support]]

Note that this document is password protected.

For most clients with OBS hosted systems, copying the ZIP to site will simply be a copy/paste onto an RDP session. The RDP's can be found in:

[[file://\spekefs2012\projects\Releases\WCS\RDP's\|spekefs2012\projects\Releases\WCS\RDP's

For some clients the process is more complex. The process for these sites is also contained within the Home Support document.

The file should be copied into the \Database\Upgrades directory found under the base install directory in the support document, e.g.:

Install Dir
E:\Program Files\CENWPRD Warehouse Control Server

Would mean to copy the ZIP file into:



E:\Program Files\CENWPRD Warehouse Control Server\Database\Upgrades

*NOTE: You can shortcut the above procedure if the release is a Test To Live. In this instance you can copy the '.done' file from the Test system into Live and rename it back to '.zip'*

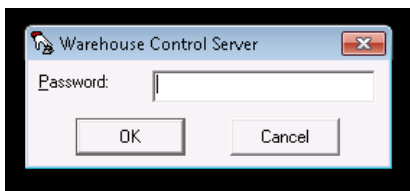
**\\spekefs2012\projects\Releases\WCS\WMS\Release DBs into the <base>\Database directory**

### 4.3.3 Stop the system

The WCS will be running in an application window, e.g.:

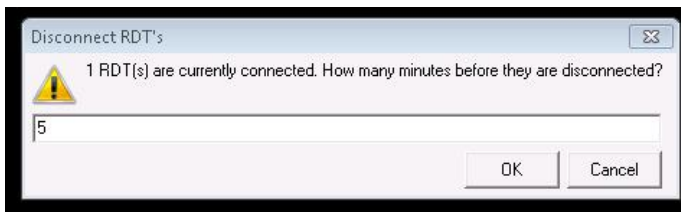


Close the WCS (check you're closing the right one!) by clicking on the X in the corner. You should get prompted for a password:



Enter "password" and click OK, then OK again at the 'Are You Sure' prompt.

If the WCS says 'Connected(x)' as in the above example, it means RDT devices are still connected and you will get an additional prompt:



This is a timer before the system will be taken down. If you want to delay this, enter a figure in minutes; otherwise enter 0 to stop the WCS immediately.

### 4.3.4 Check for running processes

The quick way to check if processes are still running after shutdown is to check for the existence of an ".ldb" file against either the log (or log1) or rdt1 databases. These can be found in the Database directory underneath the base directory:

DB_Backups	18/09/2017 10:17	File folder	
Upgrades	28/06/2019 09:58	File folder	
Log1.ldb	15/08/2019 14:13	LDB File	1 KB
Log1.mdb	15/08/2019 14:33	MDB File	1,096,072 KB
rdt1 - Copy.mdb	28/06/2019 09:34	MDB File	258,948 KB
rdt1.ldb	15/08/2019 14:13	LDB File	1 KB
rdt1.mdb	15/08/2019 14:13	MDB File	330,612 KB
rdt1_struct.mdb	09/06/2017 13:46	MDB File	2,368 KB
UpdateDB	16/07/2007 11:49	Application	124 KB

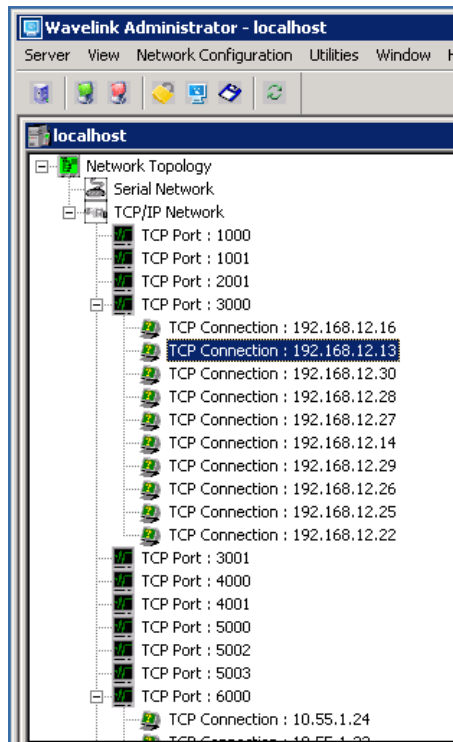
If no ".ldb" files exist, then it is probably OK to proceed with the release, though it is advised to also do the checks below. If



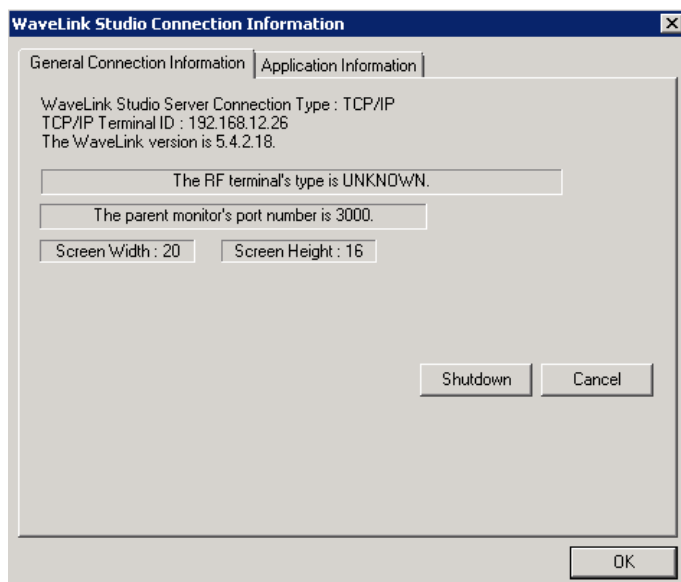
an "ldb" file exists, then the below checks must be done to release the lock - do not just delete the ldb file - it won't work.

Whilst an "ldb" file exists, you will NOT be able to do a successful release.

To ensure none of the files are locked, check WaveLink Studio Administrator (run from the Windows button or desktop shortcut) and check there are no active connections on the relevant Wavelink port - which can be found in the Support Document, e.g. :



Double click on the TCP Connection lines (NOT the TCP Port) and click on Shutdown:

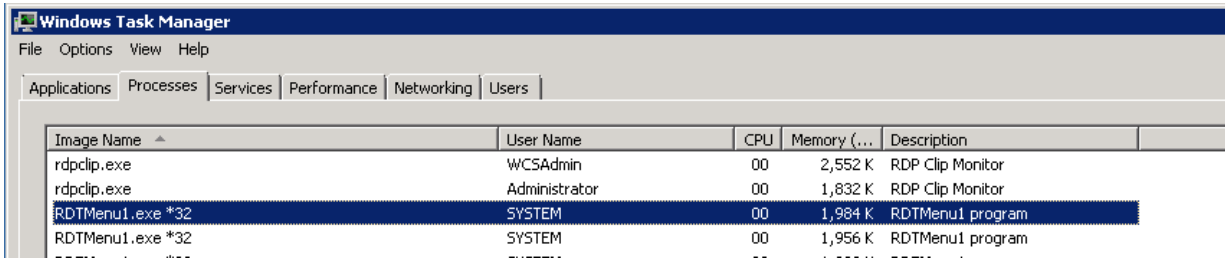


You may find these immediately start again, which could be a problem.

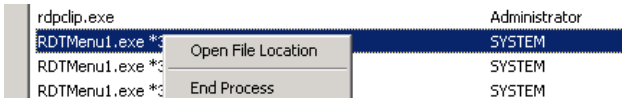
The Windows Task manager also needs to be checked for running instances of the Maintenance or RDT processes. On an RDP session the Windows Task manager can be accessed with the hotkey CTRL-ALT-END and selecting Start Task Manager

In the "Processes" tab, click on the 'Show Processes for All Users' then check the list for RTD processes:



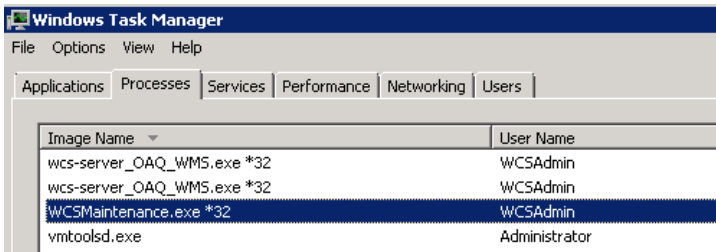


If there are ANY other WCS's running e.g. Live when you have taken down Test for a release, or other clients systems, then you **must** check which system the RDT is attached to BEFORE killing it. This can be done by right-clicking on each RDT process:



Then checking the File Explorer window that opens - it will open in the base directory of the running RDT, so you will then know if it belongs to the area where you are currently doing the release. If it does, then it can be killed by right-clicking again on the process and selecting End Process. **ONLY KILL THE PROCESSES FOR THE SYSTEM YOU ARE UPGRADING**

A similar process is also required to look for WCS Maintenance sessions which may also be locking the database:



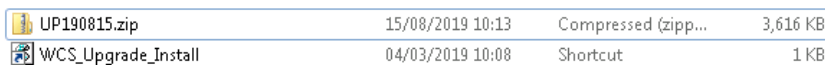
### 4.3.5 Release process

**BEFORE** running the release process, backup the rdt1.mdb database file in the format:

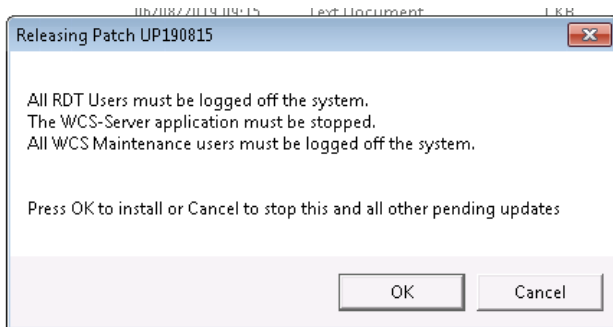
rdt1\_<SITE><AREA>\_YYYYMMDD.mdb, e.g.:

rdt1\_MORL\_20190101.mdb

The release process is run by double clicking the WCS\_Upgrade\_Install SHORTCUT:



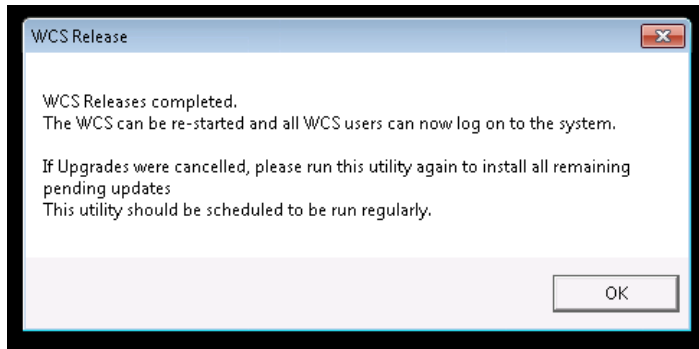
Once double-clicked, the process will be as follows - you will get a prompt:



Click OK.



When the release is completed, you will get a second prompt:



If a log database release is required (infrequent) then a further process is required.

Check which log file is in use - it may be called either log or log1 - by looking at the most recent timestamp on the log databases

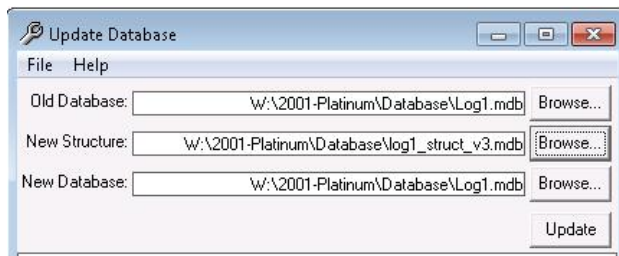
**BEFORE** running the database conversion process, backup the log1.mdb (or log.mdb) database file in the format:

log1\_<SITE><AREA>\_YYYYMMDD.mdb, e.g.:

log1\_MORL\_20190101.mdb

From the <base>\Database directory double-click the UpdateDB.exe:

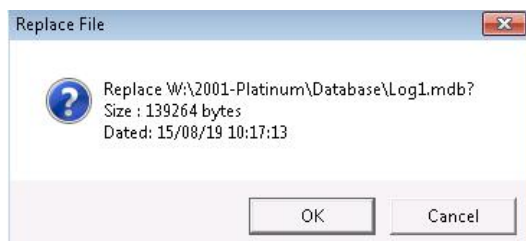
Name	Date modified	Type	Size
Upgrades	15/08/2019 10:17	File folder	
Log1.mdb	15/08/2019 10:17	Microsoft Access ...	136 KB
log1_struct_v3.mdb	23/11/2017 12:45	Microsoft Access ...	336 KB
rdt1.ldb	17/08/2019 22:43	Microsoft Access ...	1 KB
rdt1.mdb	17/08/2019 22:43	Microsoft Access ...	22,856 KB
UpdateDB.exe	16/07/2007 12:49	Application	124 KB
WCSUtils.exe	18/07/2019 12:26	Application	124 KB



Enter the location of the existing log database (in both the Old Database and New Database fields).

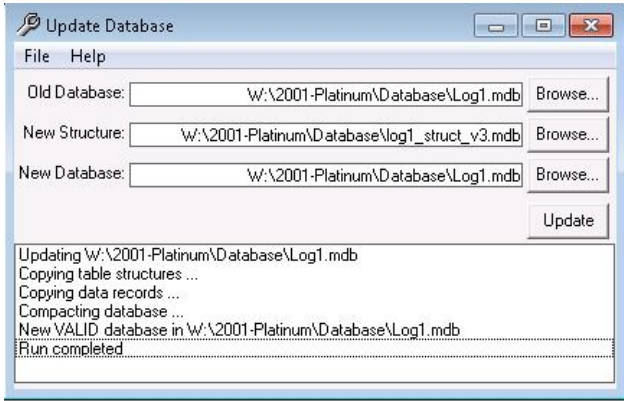
Enter the location of the log struct file (copied as part of the 3.3 process) in the New Structure field.

Click on the Update button, and you will get:



Click on OK, and the database will be converted:





When 'Run completed' then just close the Update Database box with the 'X' button.

### 4.3.6 Restart the System

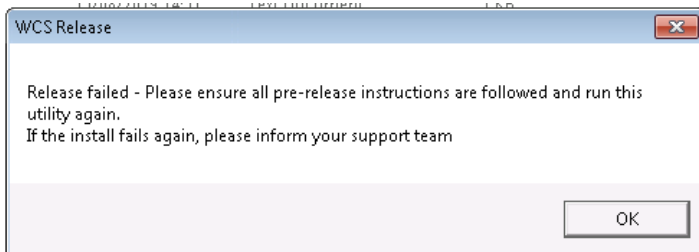
At this point the release is done and the WCS can be restarted by going into the base directory and double-clicking one of the following dependent on the system type:

Name	Date modified	Type	Size	File version
wcs-server_OAQ_WMS.exe	06/08/2019 08:57	Application	3,420 KB	3.4.0.405
wcs-server.exe	06/08/2019 08:57	Application	3,364 KB	3.4.0.405

The OAQ exe is for Oracle systems, the non-OAQ is for powerhouse.

### 4.3.7 Release process failures

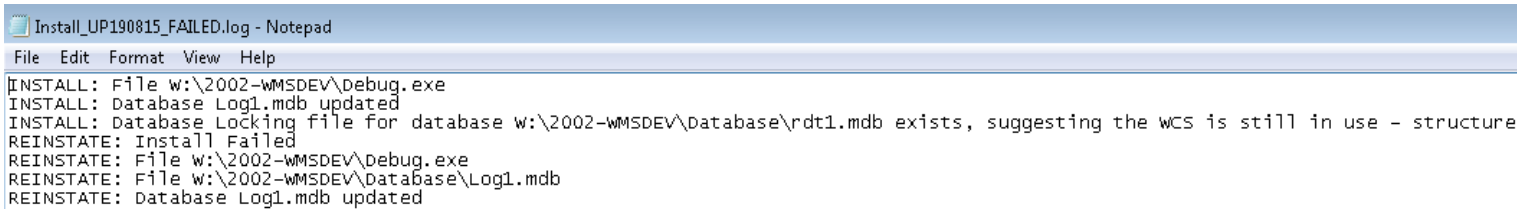
If the release process fails, then you will get the following prompt:



At this point check the relevant 'failed' log:

Install_UP190815_FAILED.log	15/08/2019 14:51	Text Document	1 KB
UP190715.done	15/07/2019 10:19	DONE File	3 544 KB

For details of the failure, e.g:



Indicating that a process is locking the rdt1 database.

If possible, fix the issue and re-run the release script.



### 4.3.8 Create Release Note

Once the release is complete, update the Release Spreadsheet for the client/system released, and produce a release note on the 'Reports' tab:

<b>Client:</b>	Product						
<b>Release Note:</b>	<b>Area:</b> Test	<b>System:</b> WCS-Oracle	<b>From:</b> UP190724				

Enter the correct client, Area, System and the From/To zip versions then click on the Release button to create an email:

**Client:** Product  
**Area:** Test  
**Patch:** UP190806 (Replaces Patch: UP190724)

**Included in patch:**

Release	RDT	WCS	Maint	DB	Ref	Description
UP190806	3.4.417	3.4.405	3.4.110	307	359143	Add UOM display on Picking

**C-WMS Dependencies included in patch:**

359143 - Add UOM display on Picking

**Functional Areas included in patch:**

Picking

**NOTES:**

None

Send the email to the required recipients and drag/drop the sent email from your sent items into the release emails folder.

### 4.3.9 Release Rollback

Prior to a roll-back, check that a Rollback.tmp directory exists:

Name	Date modified	Type	Size
Rollback	15/08/2019 10:17	File folder	
Rollback.tmp	19/08/2019 10:40	File folder	
11P140304	04/03/2019 10:04	File folder	

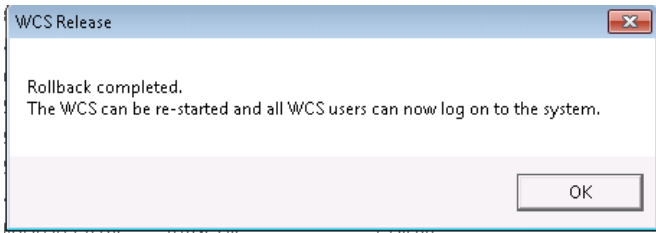
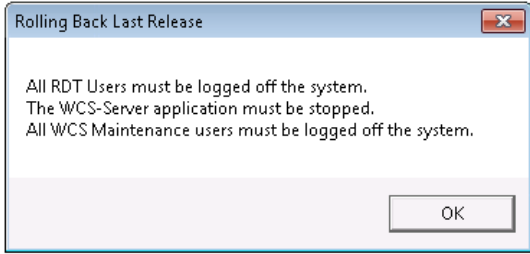
If not, create one.

To roll-back a release, double click on the WCS\_Upgrade\_Rollback script:



Name	Date modified	Type	Size
WCS_Upgrade_Rollback	16/03/2018 10:07	Shortcut	1 KB
WCS_Upgrade_Install.vbs	16/06/2009 16:32	VBScript Script File	46 KB
WCS_Upgrade_Install	04/03/2019 10:02	Shortcut	1 KB
UP190815.done	15/08/2019 10:13	DONE File	3.616 KB

The process is similar to a release:



After the above process, if the log database was converted, then this will have to be reversed using the UpdateDatabase.exe selecting the previous log structure.



## 5 Category:WCS WMS PATCH

