

# **Demo Script TMS**

Aptean Ltd  
Copyright © 2011-2025.

# Contents

<b>1 Demo Script TMS.....</b>	<b>1</b>
<b>2 Introduction.....</b>	<b>2</b>
<b>3 Log-on.....</b>	<b>3</b>
<b>4 Main Screen.....</b>	<b>4</b>
<b>5 Menus.....</b>	<b>5</b>
5.1 Quick Menu.....	5
5.2 Single Screens.....	5
5.3 Summary Screens.....	7
5.4 Extended Extracts.....	7
5.5 Analysis & Enquiries.....	7
5.6 Finding Screens Quickly.....	8
5.7 Graphs.....	9
5.8 Monitor.....	10
5.9 Settings.....	10
5.10 Admin.....	11

# 1 Demo Script TMS



## 2 Introduction

Calidus Vision is a Visibility and Productivity tool, designed to represent data from diverse systems in a single view, displaying important information in meaningful screens designed to highlight performance and enhance visibility of issues in the host systems.



### 3 Log-on

You are prompted to enter a user-name and password.

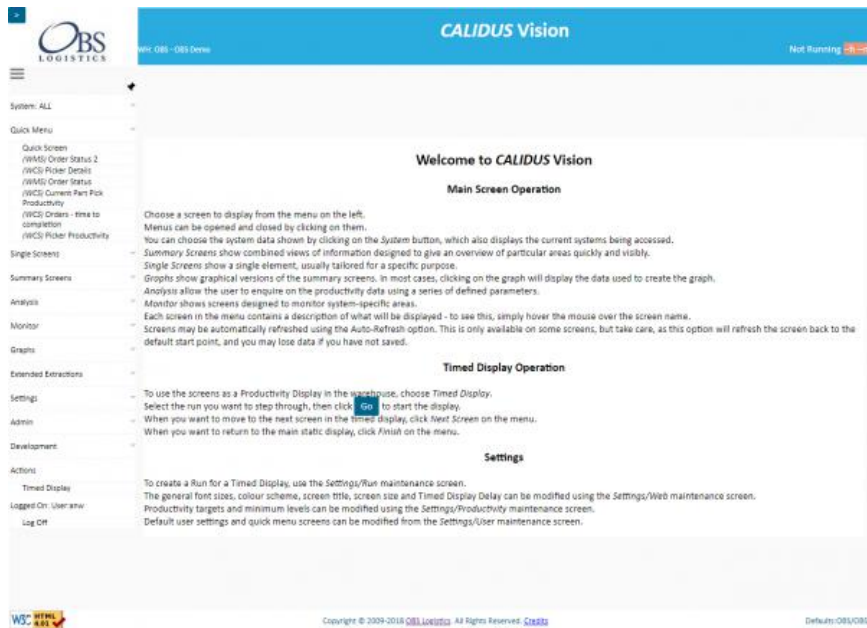
Login	
User-ID	<input type="text"/>
Password	<input type="password"/>
Log On	Clear

Security: At the moment Calidus Vision is expected to be installed within a secure network, so no secure URL is provided, although this has been done through the Portal for added security and can be added on your local installation. The user-name and password are secured through the database log-on parameters - if the user-name is not valid on that system, you will not be able to log in. Further, if the session expires (through inactivity), the user will be required to log in again.



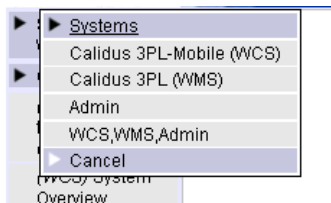
## 4 Main Screen

This Home screen shows a very brief help, showing how to use the main functions in the system.



Also shown are the menu options and systems that you are allowed to access. This is achieved through a user-definable menu structure and a security level against each configured user and against the screens, allowing many ways of configuring the system and the menus for your use.

You can filter the menu quickly by each System by using the System view drop-down from the main menu. This will remove all items that have no meaning to the system being accessed. For a generic implementation linking to a WMS and WCS, these (and potentially the Admin functions) will be the only available options on this Systems pop-up.



Systems that have been included are:

- Calidus TMS (or other TMS)
- Calidus WMS (or other WMS)
- Calidus Mobile (or other RF system)

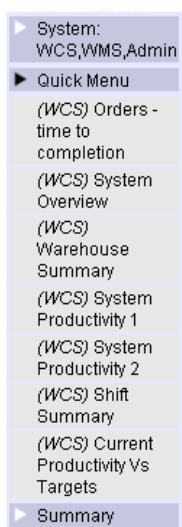
There also exists a standard set of XML import files to allow different WMS or WCS systems to provide data feeds to Calidus Vision.



## 5 Menus

### 5.1 Quick Menu

The quick menu will be open upon starting the system. This is a set of screens chosen by the user (from any of their available screens) that they use every day.



### 5.2 Single Screens

Single screens are screens designed to show a single aspect of a data for a specific purpose.

For example:

- Orders Summary - this shows the total amount of picks available to be picked at the moment through the RF system.
- Daily Part Pick Productivity - this shows the actual performance of pickers on the current day, versus the target productivity rates.

#### 5.2.1 TMS Screens

- Driver Reasons: This shows a summary of the reasons drivers gave for late arrival or collection.
- Space Utilisation - Highest Collections: The space utilisation screens highlight the best and worst space utilisation of vehicles into depots on that day, to aid in identifying better utilisation in the future.
- Space Utilisation - Lowest Collections
- Space Utilisation - Highest Deliveries
- Space Utilisation - Lowest Deliveries
- Space Utilisation - Average Collection: The Average space utilisation screens compare by route, to help identify routes with poor utilisation.
- Space Utilisation - Average Deliveries
- TMS Orders by Customer: This screen displays all the customers, summarising the PEVs and comparing that with the actuals.
- Driver Punctuality: This screen shows the punctuality of drivers on a day.
- Driver Turnarounds: This screen identifies the speed of driver turnaround within a stop.



## Top 10 Deliveries by PEV

Route	Transport	Vehicle	Trailer	Date	PEV on Vehicle	PEV %
BRITHJ	4846			08/10/2009	192.28	739.94
WCHTHJ	2839			08/10/2009	156	606.00
WCHTHJ	2858			08/10/2009	92	353.85
ALFTHJ	5712			08/10/2009	83.12	319.69
PEMTHJ	787			08/10/2009	54.6	210.00
CRTHJ	8765	GJG BV57	2212	08/10/2009	49	188.46
KIDTHJ	4179	LNY	6180	08/10/2009	40	153.85
WCHTHJ	5155			08/10/2009	38	146.15
CRTHJ	8718	HGU DK57	7174	08/10/2009	38	146.15
DAVTHJ	63	DTK	709	08/10/2009	37	142.31

## Deliveries Average PEV by Route

Route	Date	PEV	% PEV within Tolerance of Target PEV
VALTHJ	08/10/2009	23.84	86.88%
ALFTHJ	08/10/2009	25.02	81.82%
WCHTHJ	08/10/2009	26.93	78.69%
KIDTHJ	08/10/2009	21.10	66.23%
BRITHJ	08/10/2009	24.04	63.16%
PEMTHJ	08/10/2009	22.25	55.00%
CRTHJ	08/10/2009	20.19	58.98%
DAVTHJ	08/10/2009	14.37	33.33%
PCCTHJ	08/10/2009	11.00	0.00%

## Orders Summary by Customer

Customer	Planned PEV	Actual PEV	Actual Change	Debrief PEV	Debrief Change
MLASHBY	1		0		0
MLAFRDE	55	36	9		0
MLLEEDS	15		0		0
ASDAQHCAS	29		0		0
ASDALEEDS	4765	4541	1484	1953	78
ASDASECORD	28		0		0
BANDGATLED	17		0		0
BEHGTORREI	3	3	0	3	0
BLUREYCKOGA	71	42	1		0
BRIONELTON	124	108	11	21	1
CLONBETLA	9	13	4		0
CAPENAVERR	3		0		0
CAVABULL	302	43	15	8	7
CHEBCRODQ	108	18	-9	17	0
CHEBARGRET	3	5	2		0
COMTRAPPQ	22	18	-4	15	1
COMGRIDSB	213	89	14	238	92
CRANSHERRU	21	44	24		0
CRANSUTTON	15	15	0		0
CRJ ALFRET	9	9	0	9	0
CRONCHOMER	18	18	0		0





## 5.3 Summary Screens

Summary screens combine single screens to bring information together in logical groups. Additionally they summarise figures across a group (warehouse, shift, owner) in order to provide an overview of progress within the operations.

For example:

- System and Warehouse Overview - This shows a panel of the current outstanding tasks available for users to complete, and a panel showing the tasks already completed by users on the current day.
- Current Productivity - This shows panels of 4 general tasks in the warehouse, showing the performance of employees in this area, versus the target productivity rates.

### 5.3.1 TMS Screens


TMS Trips Overview: This screen shows a summary of the trips by depot, indicating the numbers of trips at which status.

TMS System Overview: This is an example of a dual screen, comprising the Trips Overview above with the Latest Activities screen.

System Overview - Trips			
Depot	ALP	CRI	DRV
Trips	134	210	26
Total PEV	2402	4279	238
Average Utilisation per Planned Vehicle	19	20	9
Open	61	125	10
Closed	4	17	0
Despatched	56	68	7
Part-Debriefed	13	0	0
Debriefed	0	0	1
Subcontracted	13	88	6
No Driver	10	3	0
No Vehicle	53	77	13
No Trailer	53	77	13
Assigned	68	45	7
Pending	59	104	17
On-Time	0	15	1
Late	67	90	7
Complete (On-Time)	0	0	1
Complete (Late)	0	0	0

## 5.4 Extended Extracts

Calidus Vision extracts and analyses all common task types (for example Picking, Receipt, Stock Take, Putaway, Replen). Some operations require that these task types be broken down further (for example, low and high part picking, picking from chill areas only). Extended Extractions are screens that show this detailed information in the way that the operation wants.

 **Note:** Due to the bespoke nature of the breakdown (i.e. very site specific), this is not something that can be demonstrated and is not configured within the generic system.

## 5.5 Analysis & Enquiries

These screens allow you to view and extract detailed information over a time period.

For Example:

- Detail Enquiry - this shows all the historical productivity data.



**Enquiry**

Report By: Productivity  
 Task Type: All Task Types  
 Timescale: Range: 23-7-2018 to 23-7-2018 Day: Mon  
 Direction: Name  
 Limit: Name  
 Level: Employee  
 Detail: All Employees  
 Go

**All Task Types for All Days**

Change Enquiry Selection Export to CSV

Show 20 entries

Employee	Date	Task Type	Time	Tasks	Cases & Units	Cases/Hour
JA - J Anderson	2009/07/20	Part-pallet Picks	00:02:25	5	112/112	2,780.69
OB - O Brown	2009/07/20	Part-pallet Picks	00:02:33	3	84/84	1,747.50
WF - W Fox	2009/07/20	Part-pallet Picks	01:09:39	26	677/677	609.45
TS - T Anderson	2009/07/21	Part-pallet Picks	00:16:49	8	164/164	555.13
OB - O Brown	2009/07/21	Part-pallet Picks	00:17:59	5	126/126	420.39
TD - T O'Malley	2009/07/20	Part-pallet Picks	00:02:31	1	10/10	256.41
AS1 - AS 1	2009/07/22	Part-pallet Picks	00:13:50	22	37/37	160.46
MR1 - MR 1	2009/07/21	Part-pallet Picks	00:10:41	1	26/26	157.25
NCL - NC 1	2009/07/21	Part-pallet Picks	02:30:37	191	351/351	139.83
BF - B Fox	2009/07/22	Part-pallet Picks	00:17:20	25	36/36	124.62
MGB - MG 3	2009/07/22	Part-pallet Picks	00:08:24	9	13/13	121.88
WTT - WT 1	2009/07/21	Part-pallet Picks	04:20:48	343	511/511	117.60
AS - A Riley	2009/07/19	Part-pallet Picks	00:46:26	68	91/91	117.17
ED2 - ED 2	2009/07/22	Part-pallet Picks	00:14:51	27	29/29	117.17
AS - A Riley	2009/07/21	Part-pallet Picks	03:12:24	312	374/374	116.63
NB - N Brown	2009/07/19	Part-pallet Picks	00:09:48	94	119/119	116.38
JD1 - JD 1	2009/07/22	Part-pallet Picks	00:17:52	16	34/34	114.18
OP - O Perkins	2009/07/22	Part-pallet Picks	01:56:44	147	222/222	114.11
PK1 - PK 1	2009/07/22	Part-pallet Picks	00:13:11	11	25/25	113.78
NBT - NB 7	2009/07/22	Part-pallet Picks	04:01:51	294	487/487	113.58
<b>TOTALS</b>				<b>74,136</b>	<b>141,016/8</b>	

Showing 1 to 20 of 652 entries

First Previous 1 2 3 4 5 ... 33 Next Last

You can query data through the fields offered.

You can Filter data once found.

You can sort the data.

You can Export the data to CSV or formatted output.

- Orders - Time To Completion - This shows the estimated amount of time required to complete the currently-available part picks in the operation.

Part-picks - Estimated Time to Completion		
Part pick tasks and Productivity rates		
	Qty	Cases
Part Pallet Picks	3,458	7,323
Part-pallet Picks Rate	56.70	88.84
Connected Users by Activity		
Activity	Users	
Pick	45	
Estimated Time to Completion		
Part-pallet Picks ETA	2.03	

## 5.6 Finding Screens Quickly

Note that this screen is one of the ones configured on this user's Quick Menu.

This can be configured through the User Settings screen.

Click on the User Quick Screens button and change the screens to be displayed (through the filter), the sequence, and save.



This methodology of sequencing screens is used throughout the system.

You can also access screens through a Search function on a pop-up toolbar.

< System Help Help on this screen Print... Search...

<

<

► Results

- (WCS) Picker Details
- (WCS) Over-Productive Pickers
- (WCS) Under-Productive Pickers
- (WCS) Picker Productivity
- (WCS) Picker Productivity (Tasks)
- (WMS) Pickers by Tasks

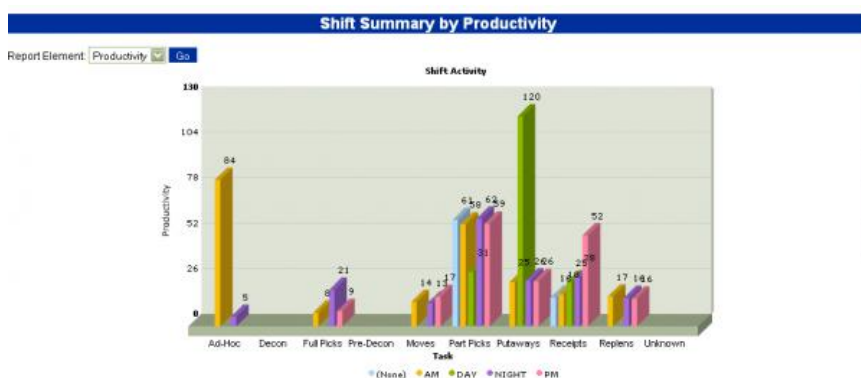
Click the '>' button in the top left to show the pop-up toolbar options. Click Search and enter 'Status'. Click on Order Status 2.

## 5.7 Graphs

Graphs plot the data from the screens we have already seen (mostly the Summary screens) to provide a quick visible comparison of data. **Warning:** Your Browser must have Flash installed to display the Graphs.

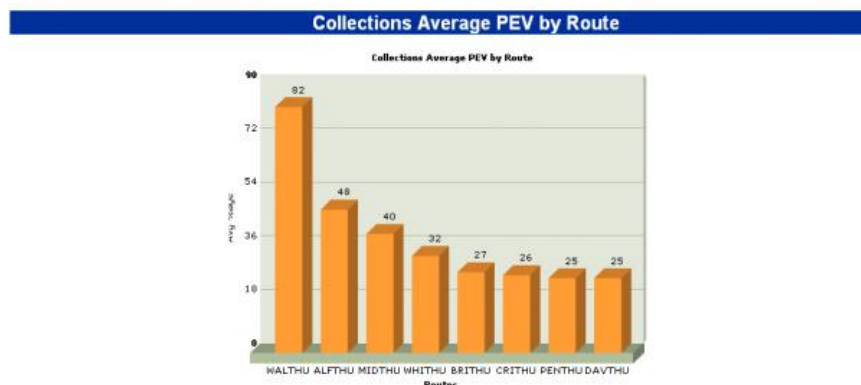
For example:

- Shift Summary screen - this shows a comparison of the average productivity of all shifts in the operation, over all task types. Note that you can click on the data bars and you will be shown the data used to calculate the information shown.



### 5.7.1 TMS Graphs

Average Deliveries Graph: These shows a comparative bar chart of the routes and the average space utilisation on deliveries and collections. Average Collections Graph



## 5.8 Monitor

The Monitor screens show views of system-specific activities that require regular monitoring.

For example:

- Order Status/Order Status 2 - This provides a view of the orders being processed in the operation, from some days in the past to future requirements. The detail can be further enquired by clicking on a figure - you will then be shown the detailed information relating to orders at that status.

Order Status										
Date	25/04	24/04	23/04	22/04	21/04	20/04	19/04	18/04	17/04	16/04
Entered	0	0	0	216	0	0	0	0	0	0
Allocated	0	0	0	0	1	0	0	0	0	0
Pick-Listed	0	0	0	0	58	4	0	2	0	2
Pick Confirmed	0	0	0	0	793	52	18	2	9	8


### 5.8.1 TMS Monitor

TMS - Top Activities: This screen summarises the last few minutes in the depot, to identify the status of the various trips.

System Overview - Latest Activities	
Timely Arrival	0
Missed Arrival	2
Late Arrival	1
√ Late Arrival (>1 Hour)	0
Timely Departure	3
Missed Departure	0
Late Departure	1
√ Late Departure (>1 Hour)	1

## 5.9 Settings

In these screens you will be able to configure the way that the system operates:

- Web - Here you can change the Look and Feel. For example, change the style to a different one, then reload the application using the button provided. There are many styles available, and more can be created (perhaps for a customer view).
- Productivity - Here you can maintain the Minimum and Target productivity levels, which directly affects the RAG colouration in the screens and extracts.  **Note:** the system is multi-warehouse and multi-owner, allowing for a central installation.
- Run - Here you can maintain the screens for a simple Dashboard. Screens can be added and removed, and the dashboards can be set to run on this terminal through the Actions/Timed Display menu option.
- There are also a range of System specific settings.

### 5.9.1 TMS Settings

You can enter the target PEV here.



## 5.10 Admin

The Admin screens allow changes of settings that affect how Vision runs. These are very restricted options (with a high security level) and should only be given to a select few supervisors. Examples:

- User Maintenance - Here you can add new users for the system and select what items they have available.
- Groups & Menu Maintenance - Here you can add and remove screens, and create new menu groups to apply to users (to restrict the screens available).
- Rules Maintenance - Here you can change settings on the system (for example, the RAG colours used, formats used for time and productivity fields and parameters for certain screens).

