

Additional Wavelink Licenses

Aptean Ltd
Copyright © 2011-2025.

Contents

1 Additional Wavelink Licenses.....1
 1.1 Preparation.....1
 1.2 Appendix A: Killing Orphaned RDT Processes.....5

1 Additional Wavelink Licenses

1.1 Preparation

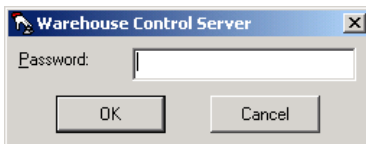
Ensure that all RDT users are logged off the system.

1.1.1 Re-start WCS-Server application

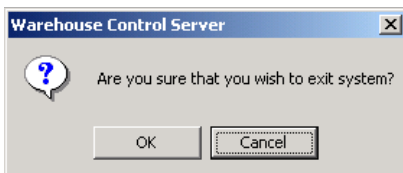
Log on the WCS Server machine and locate the WCS-Server application:



To stop, click the 'X' in the corner:

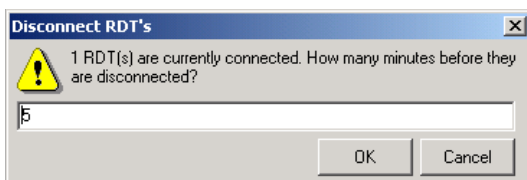


Enter the password.



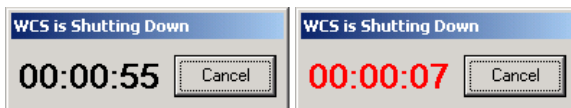
Click 'OK'

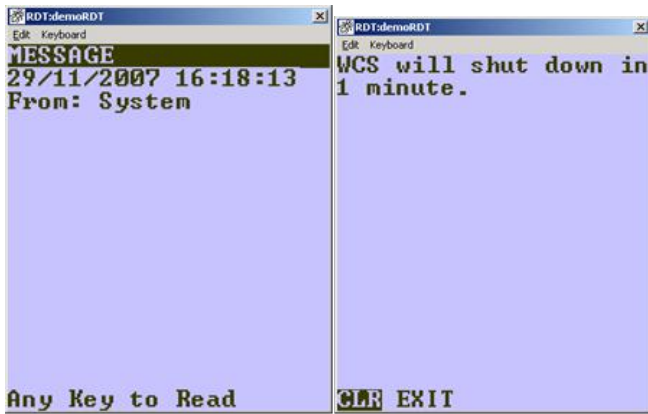
If any RDT users are connected, you will be prompted how long to wait before logging them off:



If you enter 0, the WCS-Server application will exit immediately without informing any connected RF users.

If you leave a positive number of minutes in here, the WCS-Server will commence a countdown on the screen, and will send each connected RF user a message, to exit the system immediately.





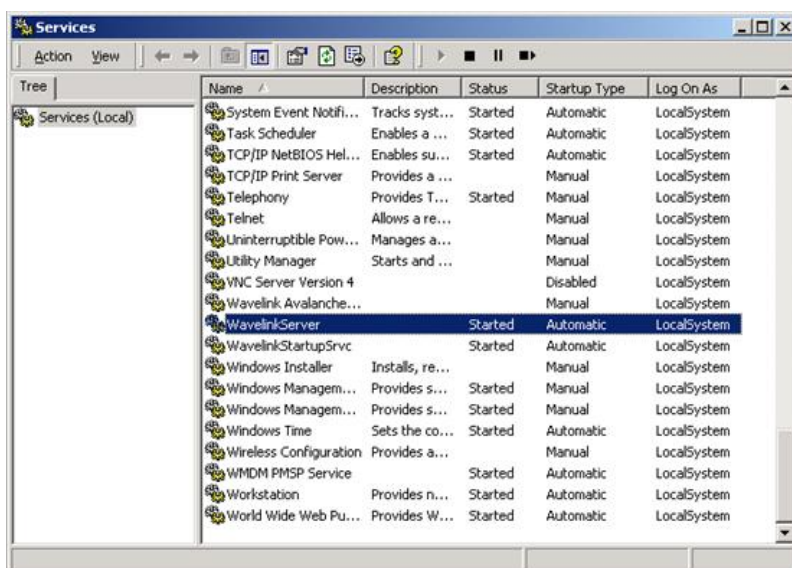
To restart the WCS-Server application, choose the application from the *Start menu/Programs/Warehouse Control Server/WCS Server* shortcut.

When the server restarts, the WCS will reconnect to any RDT users when they next press a key:



1.1.2 Stop and Start the Wavelink Services

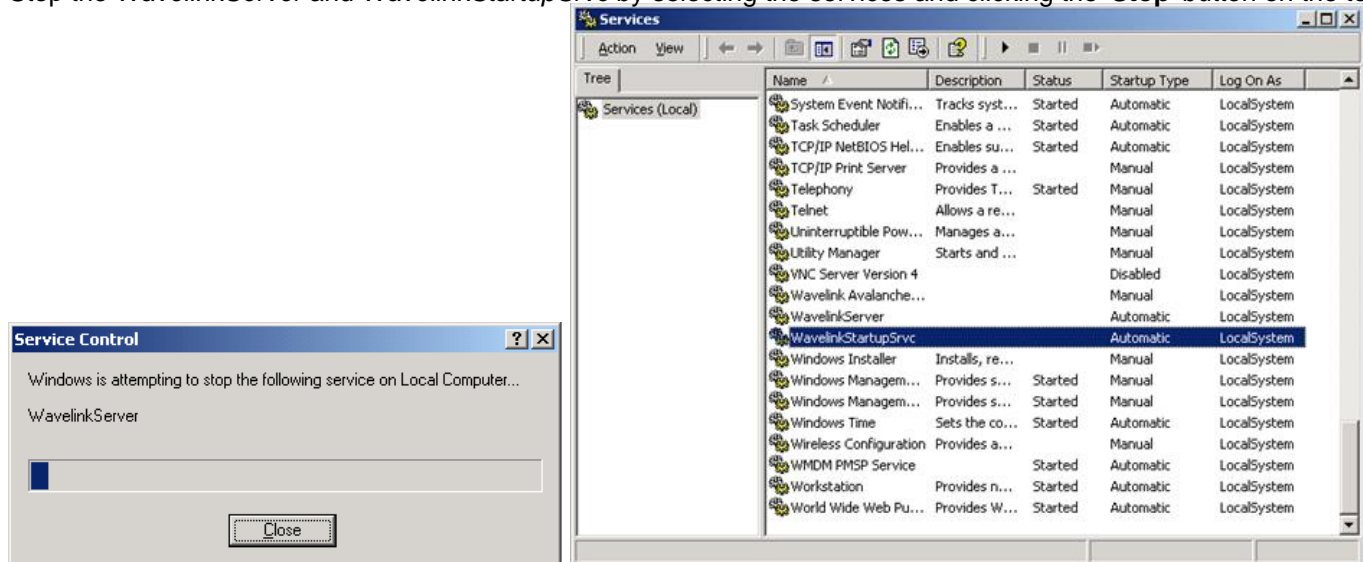
Note: Restarting the Wavelink services will forcibly disconnect any users currently connected. Any users disconnected in this way may require their locks clearing through the WCS Maintenance application (if they were performing a task when forcibly disconnected). It is also possible that RF applications that have been forcibly disconnected in this way may not be killed efficiently by the operating system. Therefore these orphaned or 'spinning' processes may need to be killed manually - see Appendix A



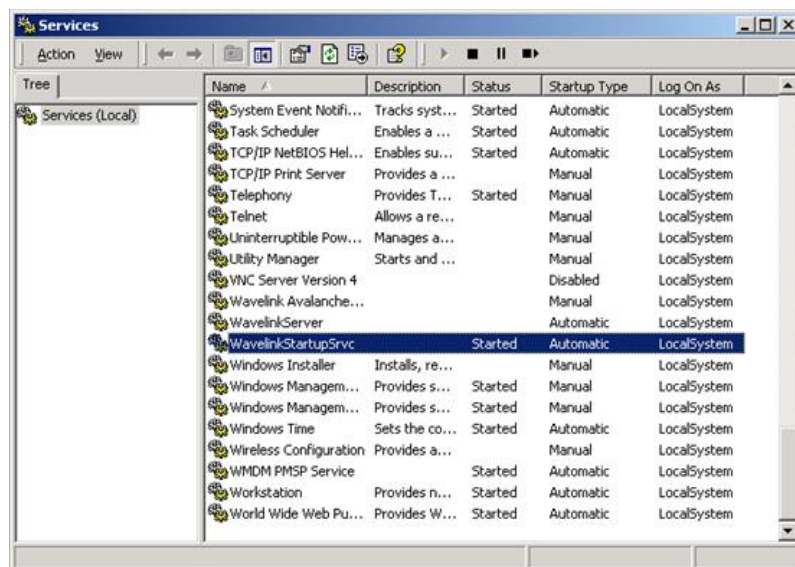
Start the Services control panel by clicking on *Start/Settings/Control Panel/Administrative Tools/Services*.



Stop the *WavelinkServer* and *WavelinkStartupSvc* by selecting the services and clicking the '**Stop**' button on the toolbar:



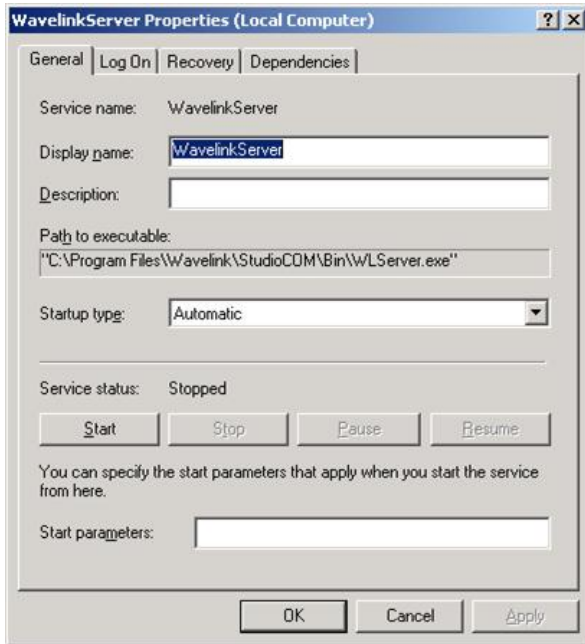
Start the *WavelinkStartupSvc* Service by selecting the service and pressing the '**Start**' (play) button on the toolbar.



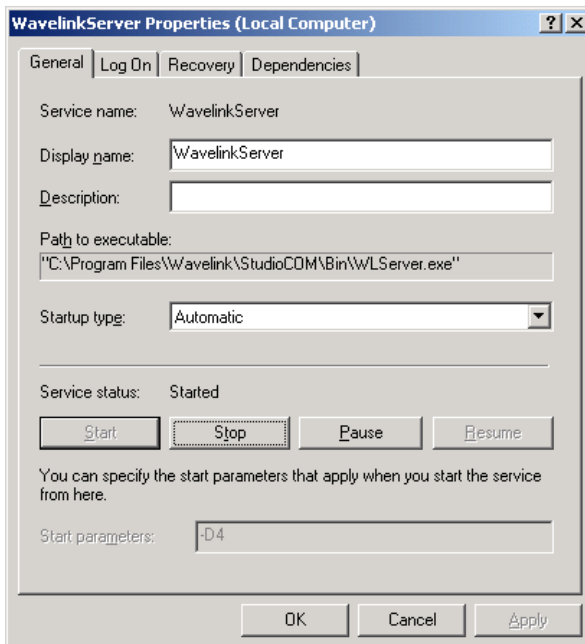
Start *WavelinkStartupSvc* Service by selecting the service and pressing the '**Start**' (play) button on the toolbar.

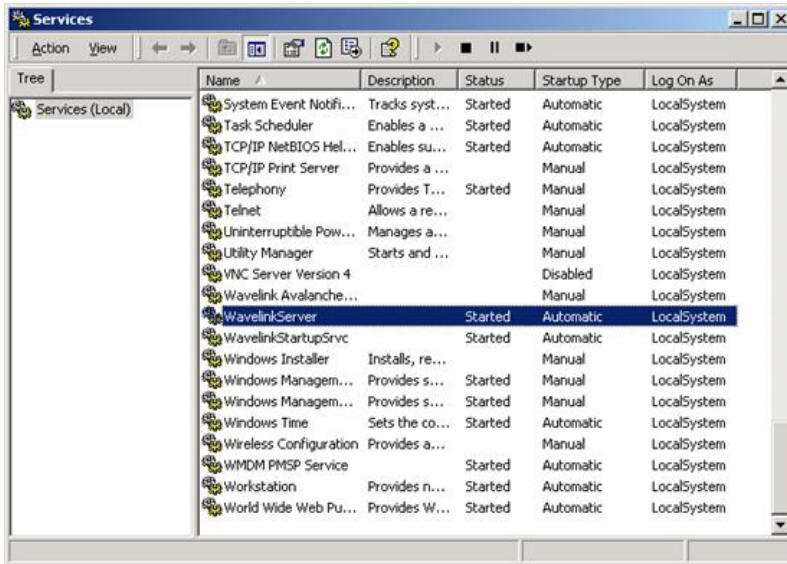
Note: At this point, you may want to enable extra diagnostic messages in Wavelink, to help resolve the problem. If so, **do not** start the process this way, but right-click on the Wavelink service and choose *Properties* from the pop-up menu.





Enter -D4 in the Start parameters, then click '**Start**':





Note: The Debug levels for Wavelink Server are:

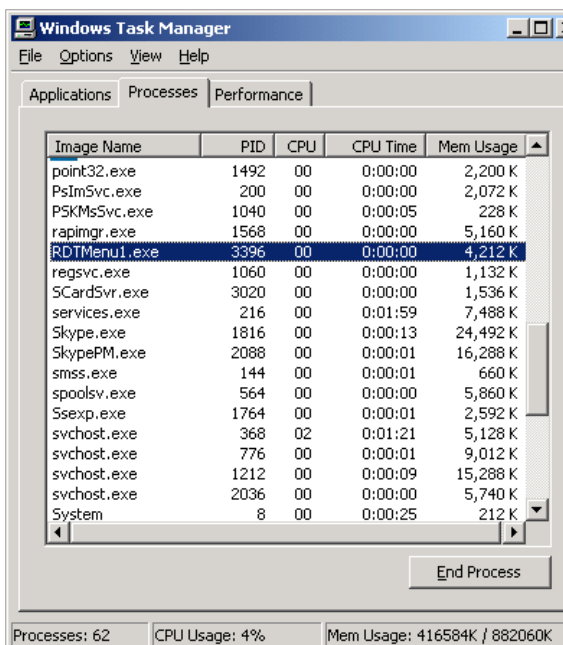
Debug Level Purpose

- 0 No debug messaging at all
- 1 Notifies the event log and the WaveLink log files of the WaveLink server start-up and termination.
- 2 Level 1 messages plus major application errors
- 3 Level 2 messages plus minor application errors and warnings
- 4* Level 3 messages plus current action messages.

*Level 4 debugging also enables the WaveLink API debug messaging.

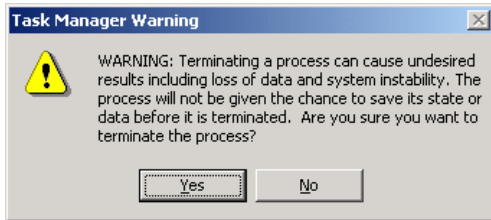
1.2 Appendix A: Killing Orphaned RDT Processes

Run Windows Task Manager:



Orphaned processes will be named 'RDTMenu1.exe' and will be constantly taking a large amount of CPU. Once these have been identified, click on the RDTMenu1 processes taking the CPU and click 'End Process'.





Click '**Yes**' - this will kill the process.

If necessary, repeat this process to kill all the orphaned RDTMenu1 processes.

