

Assigning Users to a Group

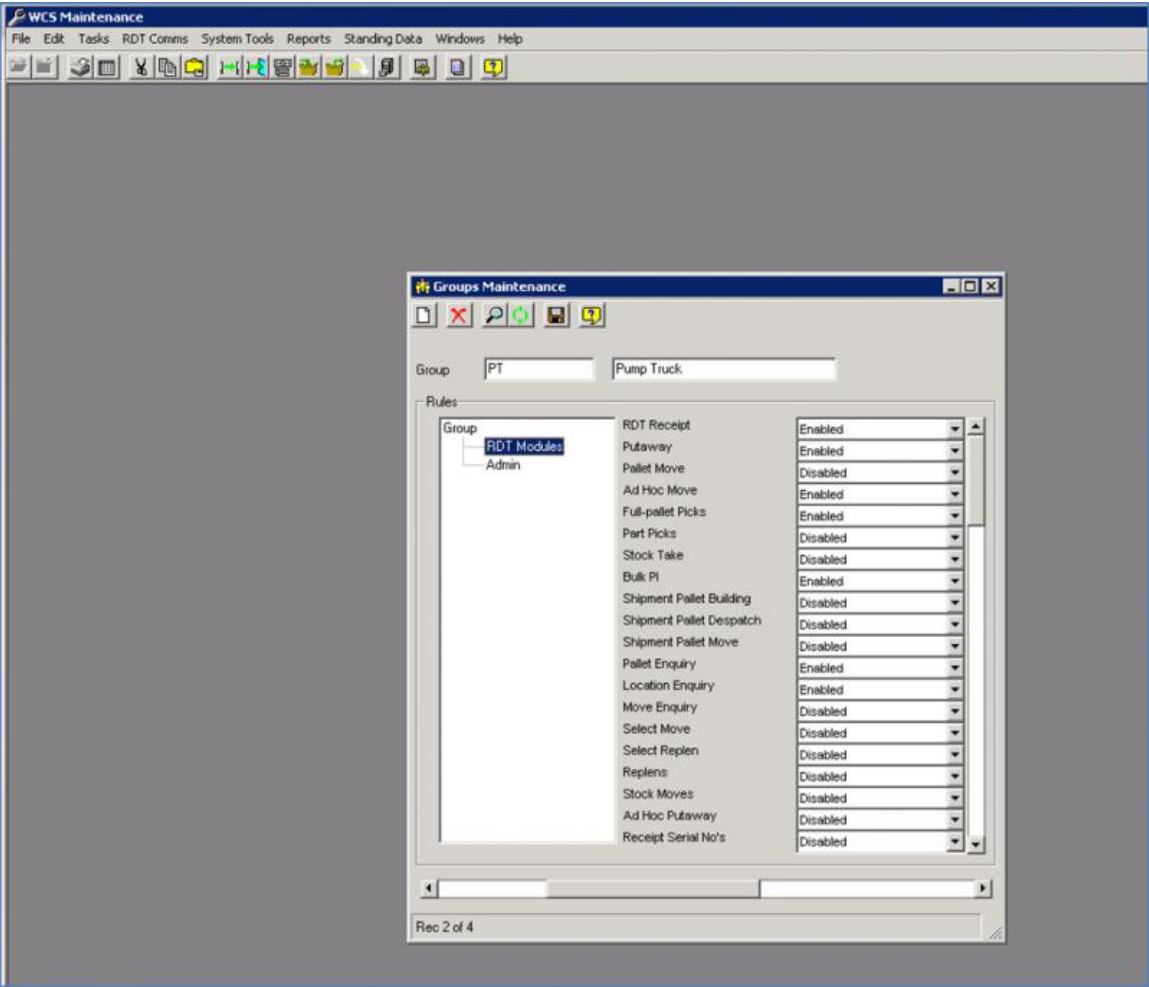
Aptean Ltd
Copyright © 2011-2025.

Contents

1 Assigning Users to a Group.....1

1 Assigning Users to a Group

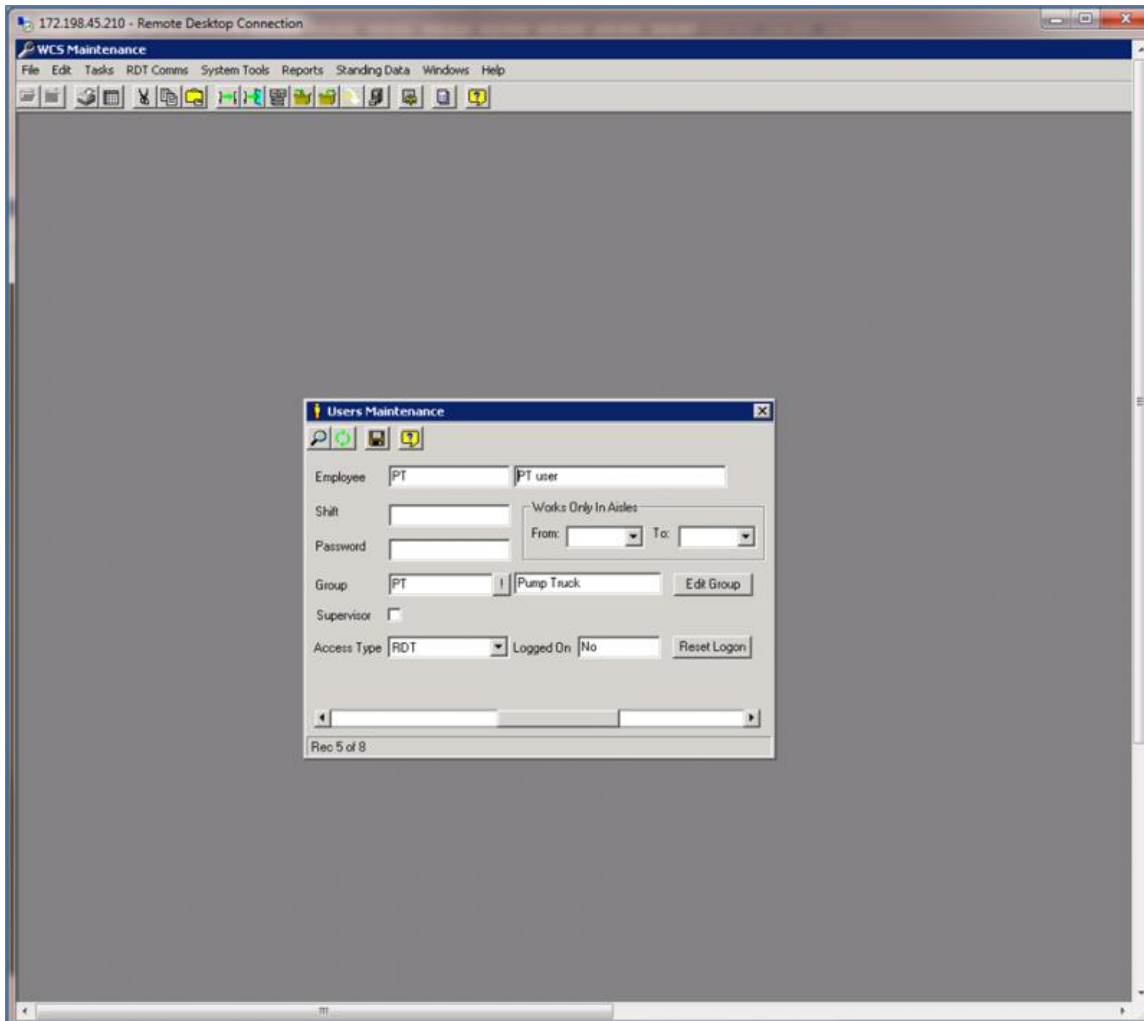
WCS Maintenance -> Standing Data -> Group Maintenance



Three new user groups have been created PT, RT & VN.

Which modules appear on the RF are controlled by enabling or disabling the listed functions. ? WCS Maintenance -> Standing Data -> User Maintenance





To assign a user to the correct group, when they have been created on the WMS the employee code is also created on the RF.

Find the user and then assign them to their relevant group.

NB by default they will automatically be assigned to the warehouse group which is the current menu structure that you are currently working with.

