

The stock enquiry screen is designed so that the user can view various pieces of information regarding the stock belonging to a specific owner.

The enquiry is executed after the following parameters have been entered:

- **Stock Code** - The stock code can be manually entered, or the 'List of Values' icon can be used.

Calidus (SPL) v810.020.13

Action Edit Query Block Record Field Window Help

Stock Enquiry

Company: JP1 Department: 0000 16-JUN-2025 ENQSKSK01A v4.16

Owner: ROB 001 RM Description: Bonne Marche Apricot Jam

Stock Code: 000000020

AKA Code:

Totals Details Stock Warehouse Stock UOMs

Size:

Unit Of Measure 1: UNIT Factor Items Per Pack: 1

Unit Of Measure 2: CASE Factor: UNIT to CASE 8

Unit Of Measure 3: PALLET Factor: UNIT to PALLET 96

Stock UOM: UNIT Factor: CASE to PALLET 12

Product Class:

Product Type: 1

Sales Kit: N Weight: 0.500 KGM

No. of Labels: 0 Label SOP: N

Avg Cost (Base Curr): 0 Case Length: 9.50 CM

Cases per Layer: 1 Width: 4.30 CM

Layers per Pallet: 4 Depth: 9.00 CM

Break Case: Y

Record: 1/2 <OSC>

The following data is displayed on the *Details* tab:

- **Size** - The size of the product (small/medium/large etc)
- **U.O.S** - The unit of sale
- **Unit of Measure 1** - The first unit of measure will be displayed here (e.g If the product came in cases on a pallet, but we pick singles, the lowest denominator will be displayed 'Unit')
- **Unit of Measure 2** - The second unit of measure will be displayed here (Following from above, the next lowest denominator will be displayed, i.e Cases)
- **Unit of Measure 3** - The third unit of measure will be displayed here (Following from above, the last denominator will be displayed, i.e Pallet)
- **Factor Items per Pack**
- **Factor** - It is possible to have three different factors. Using the screen shot above, we can see that the factors describe the makeup of the pallet. I.e how many units in a case, how many units on a pallet and how many cases are on a pallet.
- **Product Class** - Displays the product class.
- **Product Type** - Displays the product type.
- **Sales Kit** - Displays whether the product is a sales kit or not.
- **Weight** - Displays the weight.
- **No. of Labels** - Displays the default number of labels to be printed at any given point.
- **Label SOP** - Displays the default number of labels to be printed relating to sales.
- **Avg Cost** - Displays the average cost.
- **Cases Per Pallet** - Displays how many cases are on a standard pallet.
- **Layers Per Pallet** - Displays how many layers are on a standard pallet.
- **Case Length/Width/Depth** - Displays the length, width and depth of the case.
- **Current Pick Location** - Displays the picking location if dedicated.
- **Break Case** - Displays whether the case should be broken down in to units.

Calidus (3PL) v810.020.13

Action Edit Query Block Record Field Window Help

Stock Enquiry

Company: JP1 Department: 0000 16-JUN-2025 ENQSKSK01A v4.16

Owner: ROB 001 RM Description: Bonne Marche Apricot Jam

Stock Code: 000000020

AKA Code:

Totals Details Stock Warehouse Stock UOMs

	Calculated Pallets	Weight (KGM)		Pallets	Weight (KGM)
On-Hand:	60/ 0	5 60.000	In Receipt:	0/ 0	0 0.000
Actual On Hand Pallets:	5	60.000	Inter-Warehouse Transfer:	0/ 0	0 0.000
Committed:	0/ 0	0 0.000	On Order:	0/ 0	0 0.000
Allocated:	0/ 0	0 0.000	In Transit:	0/ 0	0 0.000
Held:	24/ 0	2 24.000	Out Transit:	0/ 0	0 0.000
Free:	36/ 0	3 36.000	Back-Order:	0/ 0	0 0.000
			Back to Back:	0/ 0	0 0.000
			Reserved:	0/ 0	0 0.000

View Warehouse Details

Record: 1/2

The following data is displayed on the *Totals* tab:

**NOTE - If there are multiple warehouses containing the same product, then the totals will be a combined figure**

- *On Hand* - Total of all stock of that product on the system.
- *Allocated* - Total stock that is allocated to specific orders.
- *Committed* - Stock is committed to orders but not yet allocated.
- *Held* - Stock that has been put on 'Hold'.
- *Back Order* - Stock is on back order.
- *On Order* - Stock that is on a purchase order and yet to be received.
- *In Receipt* - Stock that is currently in receipt status but has yet to be putaway.
- *Reserved* - Stock that is reserved for a specific customer.
- *Free* - Stock that is available to order against.
- *In Trans* - Stock that is coming in on a goods in pre-advice note.
- *Out Trans* - Stock that is awaiting to be POD'.
- *Volume* - Total volume of the stock (used when operating with weights etc).



Use the scroll bar to see all the information relating to each individual warehouse.

If you wish to see further detail for a specific warehouse, then press the **Details** button.

Calidus (3PL) v810.020.13

Action Edit Query Block Record Field Window Help

Stock Enquiry Detail

Company: JP1 Department: 000016-JUN-2025ENQSKSK03A v4.10

Owner: ROB001RMDate of Last Movement:

Stock Code: 000000020Bonne Marche Apricot JamDate of Last Sale:

Warehouse Id: NFTDEFAULT WAREHOUSE NAME

	Quantity	Pallets	Weight (KGM)	Calculated Pallets		Quantity	Pallets	Weight (KGM)
On Hand:	60/0	5	60.000	5	Receipt:	0/0	0	0.000
Committed:	0/0	0	0.000		Reserved:	0/0	0	0.000
Allocated:	0/0	0	0.000		Back Order:	0/0	0	0.000
Held:	24/0	2	24.000		Back to Back:	0/0	0	0.000
Free:	36/0	3	36.000		On Order:	0/0	0	0.000
Transfer:	0/0	0	0.000		In Transit:	0/0	0	0.000
					Out Transit:	0/0	0	0.000

Period to Date

	Quantity	Value
Receipts:	60/0	0.00
Transfers:	0/0	0.00
Sales:	0/0	0.00
Disposals:	0/0	0.00
Adjustments:	0/0	0.00

Year to Date

	Quantity	Value
Receipts:	60/0	0.00
Transfers:	0/0	0.00
Sales:	0/0	0.00
Disposals:	0/0	0.00
Adjustments:	0/0	0.00

Opening On Hand:

Minimum Quantity:

Maximum Quantity:

Reorder Level:

Average Cost:

0

0

0

0

0.0000

Location Details

Movement Detail

Record: 1/1<OSC>

You can access the Location Detail screen **WHS0900** using the **Location Detail** button.

You can access the Stock Movement Enquiry screen **STS3006** using the **Movement Detail** button.

# Contents

1 ENQSKSK03A Stock Enquiry Detail.....1

2 ENQSOOP3A Stock Enquiry By Product.....3

3 Stock Enquiry.....5

4 STS2020 Rotation by Stock Enquiry.....6

5 Location.....9

6 WHS0102 Stock Analysis.....10

7 WHS0115 General Enquiries (Enquiry by Rank).....11

    7.1 Stock Movement.....11

8 WHS0904 Held Stock Enquiry.....14

9 WHS0906 Warehouse Stock Enquiry.....15

10 WHS0915 Pallet Enquiry.....16

11 WHS0916 Customer Pallet Enquiry.....18

# 1 ENQSKSK03A Stock Enquiry Detail

This window displays detailed stock information for the selected stock code.

Calidus (3PL) v810.020.13

Action Edit Query Block Record Field Window Help

Stock Enquiry Detail

Company: JP1 Department: 0000 17-JUN-2025 ENQSKSK03A v4.10

Owner: ROB 001 RM Date of Last Movement: 16-FEB-2022

Stock Code: SC01\_051 Stock Code 051 50 ml Date of Last Sale:

Warehouse ID: NFT DEFAULT WAREHOUSE NAME

	Quantity	Pallets	Weight (KGM)	Calculated Pallets		Quantity	Pallets	Weight (KGM)
On Hand:	145/0	7	290.000	8	Receipt:	0/0	0	0.000
Committed:	0/0	0	0.000		Reserved:	0/0	0	0.000
Allocated:	0/0	0	0.000		Back Order:	0/0	0	0.000
Held:	5/0	1	10.000		Back to Back:	0/0	0	0.000
Free:	140/0	7	280.000		On Order:	0/0	0	0.000
Transfer:	0/0	0	0.000		In Transit:	0/0	0	0.000
					Out Transit:	0/0	0	0.000

Period to Date		Year to Date				
Quantity	Value	Quantity	Value			
Receipts:	235/0	0.00	235/0	0.00	Opening On Hand:	0
Transfers:	0/0	0.00	0/0	0.00	Minimum Quantity:	11
Sales:	0/0	0.00	0/0	0.00	Maximum Quantity:	109
Disposals:	0/0	0.00	0/0	0.00	Reorder Level:	0
Adjustments:	-90/0	-22.500.00	-90/0	-22.500.00	Average Cost:	25.0000

Location Details Movement Detail

Record 1/1 -<OSC>

Information displayed includes:

- Owner
- Stock Code
- Stock Code Description
- Warehouse ID
- Default Warehouse Name
- Date of Last Movement
- Date of Last Sale
- On Hand (Quantity/Weight)
- Committed (Quantity/Weight)
- Held (Quantity/Weight)
- Allocated (Quantity/Weight)
- Free (Quantity/Weight)
- Trans In Quantity
- Trans In Weight (KGM)
- Trans Out Quantity
- Trans Out Weight (KGM)
- Received (Quantity/Weight)
- On Order (Quantity/Weight)
- Back Order (Quantity/Weight)
- Back to Back (Quantity/Weight)
- In Transit (Quantity/Weight) Within this window, you also see a "Period to Date" and "Year to Date" section with fields like:
- Receipts (Quantity/Value)
- Sales (Quantity/Value)
- Transfers (Quantity/Value)
- Adjustments (Quantity/Value)
- Disposals (Quantity/Value) And additional summary fields:
- Opening On Hand
- Minimum Quantity
- Maximum Quantity
- Reorder Level



- *Average Cost*

**Viewing Location Details:** From the Stock Enquiry (ENQSKSK03A) window, you can click the **Location Details** button. This opens the Stock Location Enquiry ([WHS0900](#)) screen.





## 2 ENQSOOP3A Stock Enquiry By Product

This is the Stock Enquiry By Product (ENQSOOP3A) screen.

Stock Code	Class	UOM	On Hand Qty	Calc. Pts	Actual Pallets	On Hand Wt	Logical Wght	Committed Qty
000000020	101	KGM	60/	0	5	5	60.000	0/
Bonne Marche Apricot Jam								
0142857	101	KGM	45/	0	1	1	31.500	0/
LEMSIP SACHETS LEMON 10S								
Description 2								
0144833	101	KGM	49/	0	1	1	0.000	0/
LEMSIP MAX CAPSULES 16S XX								
0152161	101	KGM	0/	0	0	0	0.000	0/
DETOL EXTRA								
Description 2								

### Initial Query Setup:

- You enter the *Owner* field.
- You select the list of values icon next to the *Warehouse* field.
- You may enter the *Product Range* and *Product Class* fields.

### Executing Query and Viewing Results:

- You click the **Execute Query** button on the toolbar.

The screen populates with a table of stock details for the selected warehouse. This table includes columns such as:

- *Stock Code*
- *Description*
- *Class*
- *UOM*
- *On Hand Qty*
- *Calc. Pts*
- *Actual Pallets*
- *On Hand Wt*
- *Logical Wght*
- *Committed Qty*
- *Committed Wt*
- *Allocated Qty*
- *Allocated Wt*
- *Free Qty*
- *Free Wt*
- *Trans In Qty*
- *Trans In Wt*
- *Trans Out Qty*
- *Trans Out Wt*

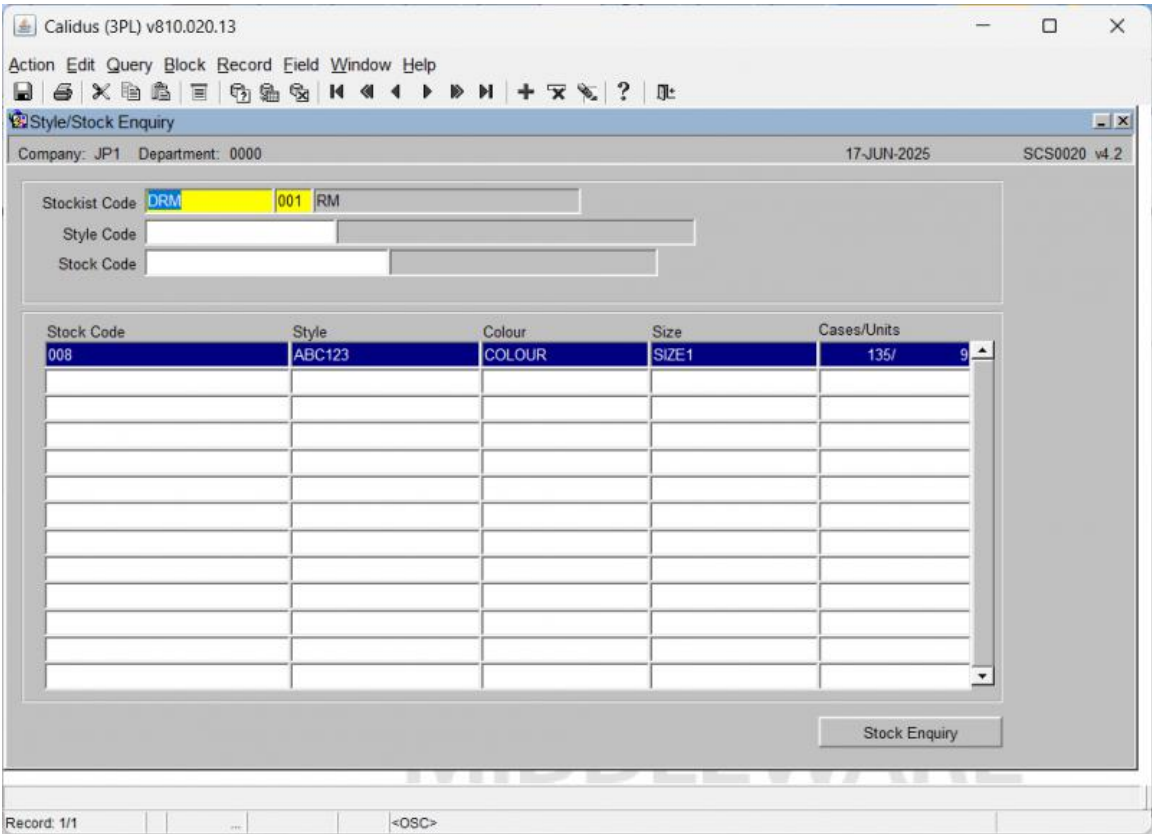


- *Rct Qty*
- *Rct Wt*
- *On Ord Qty*
- *On Ord Wt*
- *B/O Qty*
- *B/O Wt*



### 3 Stock Enquiry

This is the Style/Stock Enquiry (SCS0020) screen.



**Initial Search Criteria Input:**

- You enter the *Stocklist Code* field.
- You may also enter *Style Code* and *Stock Code* fields.

**Executing Query and Viewing Results:**

- You click the **Execute Query** button.

The screen populates with a table displaying details for the entered stock, including:

- *Stock Code*
- *Style*
- *Colour*
- *Size*
- *Cases/Units*

For more details, you can click the Stock Enquiry button, which will take you to the Stock Enquiry screen [ENQSKSK01A](#).



## 4 STS2020 Rotation by Stock Enquiry

This is the Rotation by Stock Enquiry screen.

Calidus (3PL) v810.020.13

Action Edit Query Block Record Field Window Help

Rotation by Stock Enquiry

Company: JP1 Department: 0000 17-JUN-2025 STS2020 v1.6

Owner: ROB 001

Product: SC01 Stock Code 01 Pack:

On Hand: 24/ 0 Held: 0/ 0 Alloc: 2/ 0 Free: 22/ 0

Calculated Pallets: 1 Held Pallets: 0 Allocated Pallets: 1 Free Pallets: 1

Actual Pallets: 2 Held Weight: 0.000 Allocated Weight: 2.468 Free Weight: 27.148

On-Hand Weight: 29.616 (KGM)

Rotation No.	Bnd	Received Quantity	Receipt Date	No. of Pallets	Race Weight
2005000081	N	100/	12-DEC-2005	2	123.400
200700562	N	50/	25-OCT-2007	1	61.700

View Details

ORACLE FUSION MIDDLEWARE

Record: 1/1 -<OSC>

Here's a summary of the steps:

**Searching for Stock:** You begin by entering the *Owner* and *Product* fields. Then, to initiate the query, you click the **Execute Query** button.

**Viewing Rotation Details:** The screen then populates with stock rotation details, including:

- *Rotation No.*
- *Received Quantity*
- *Receipt Date*
- *No. of Pallets/Race Weight*

**Viewing Item Details:** You can select a specific entry from the displayed list and then click the **View Details** button. This action opens the Rotation by Stock Enquiry Detail window STS2025, showing more granular information such as:

- *Location Type*
- *Pallet*
- *Customer Pallet*
- *On-Hand Quantity (KGM)*
- *Free Quantity (KGM)*



Calidus (3PL) v810.020.13

Action Edit Query Block Record Field Window Help

Rotation by Stock Enquiry Detail

Company: JP1 Department: 0000 17-JUN-2025 STS2025 v4.3

Owner: ROC 001

Product: SC01 Stock Code 01 Pack:

Rotation No: 200700562 Rece. Weight (KGM) Bnd: N

Received Qty: 50/ 0 2 61.700 Date: 25-OCT-2007

Location	Type	Pallet	Customer Pallet	On Hand Qty	On-Hand Weight (KGM)	Free Qty	Free Weight (KGM)
81012	1	5200	1649	23/	0	22/	0
		200700562		28 362		27.148	
MAD11	6	5200	1649	1/	0	0/	0
		200700562		1.234		0.000	

Further Details

ORACLE FUSION MIDDLEWARE

Record: 1/1 <OSC>

**Viewing Further Details (Stock/Pallet):** From within the Rotation by Stock Enquiry Detail window, you can select an item and click **Further Details**. This navigates you to another view within the same Rotation by Stock Enquiry Detail window STS2030, displaying more comprehensive information about the selected stock or pallet. This includes its:

- Owner
- Stock
- Rotation No.
- Receipt Date
- Movement
- Location
- Cust Pallet
- Owner Batch ID
- Rec Advice
- Usage
- Bonded
- On-Hand Weight (KGM)
- Allocated Weight (KGM)
- Free Weight (KGM)



Calidus (3PL) v810.020.13

Action Edit Query Block Record Field Window Help

Rotation by Stock Enquiry Detail

Company: JP1 Department: 000017-JUN-2025STS2030 v4.3

Owner: ROE001

Stock: SC01Stock Code 01Pack

Rotation No.: 200700562

On Hand Qty: 23/ 0

Committed Qty: 0/ 0

Allocated Qty: 1/ 0

Held Qty: 0/ 0

Free Qty: 22/ 0

Trans In Qty: 0/ 0

Trans Out Qty: 0/ 0

On Hand Weight: 26.362 KGM

Committed Weight: 0.000 KGM

Allocated Weight: 1.234 KGM

Held Weight: 0.000 KGM

Free Weight: 27.148 KGM

Trans In Weight: 0.000 KGM

Trans Out Weight: 0.000 KGM

Pallet: 5200

Cust Pallet: 1649

Owner Batch ID: 200700562

Rec Advice: 1256

Manu Date:

Receipt Date: 25-OCT-2007

Sell By Date: 23-JAN-2008

Usage: BULK

Bonded: N

Movement: 0

Location: 01012

To:

Weight: 0.000 KGM

View Hold Reasons

ORACLE FUSION MIDDLEWARE

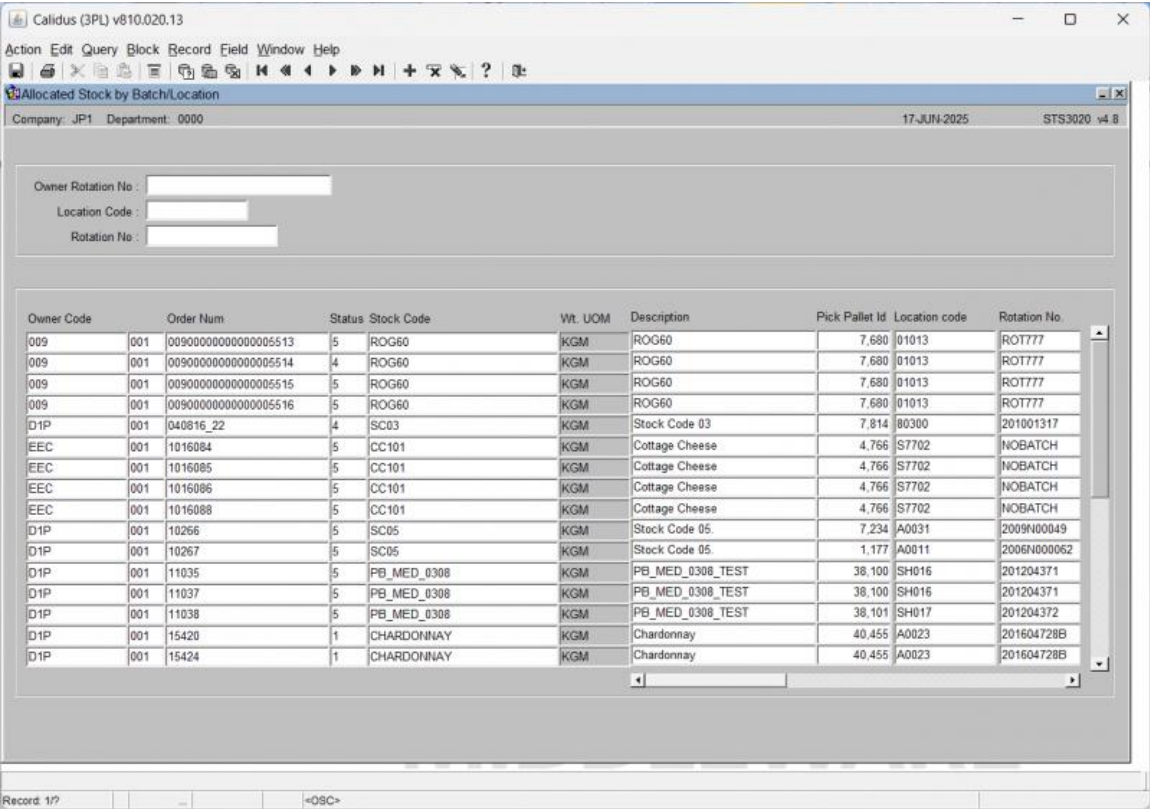
Record: 1/1<OSC>

**Viewing Held Stock Reasons:** From this detailed view within the Rotation by Stock Enquiry Detail window, you can click **View Hold Reasons** to open the Held Stock Enquiry window [WHS0904](#).



# 5 Location

This is the "Allocated Stock by Batch/Location" screen (STS3020).



## Initial Query Preparation:

You may enter *Owner Company No*, *Location Code*, and *Rotation No* fields.

## Executing the Query:

- You click the **Execute Query** button on the toolbar at the top of the screen.

## Viewing Results:

- The screen populates with a table displaying allocated stock information. This table includes columns such as:
  - ◆ *Owner Code*
  - ◆ *Order Num*
  - ◆ *Status Stock Code*
  - ◆ *Wt. UOM*
  - ◆ *Description*
  - ◆ *Pick Pallet Id*
  - ◆ *Location Code*
  - ◆ *Rotation No*
  - ◆ *Owner Rotation No*
  - ◆ *Ordered Qty*
  - ◆ *Ordered Wt.*
  - ◆ *Allocated Qty.*
  - ◆ *Allocated Wt.*



[illegible]

<i><b>Field Name</b></i>	<i><b>Description</b></i>
<i>Date From</i>	The calendar start date for the stock analysis period.
<i>To</i>	The calendar end date for the stock analysis period.

Column Name	Description
Rank	The numerical rank of the stock item.
Stock Code	The unique identifier for the product/stock item.
Description	A brief text description of the stock item.
Qty Ordered	The total quantity of the stock item ordered within the period.
Qty Despatched	The total quantity of the stock item despatched within the period.
Difference	The calculated difference between the quantity ordered and the quantity despatched.



The screen comprises multiple types of enquiry on different tabs, as shown below.

## 7.1 Stock Movement

Here, you may select a date range - the tab will rank the stock moved by quantity ordered and despatched.

### 7.1.1 Pick Face Freq

11 Ready for **What's Next, Now™**



Here, you may select a date range and limit the number of records. - the tab will rank the pick faces by most NUMBER of picks (visits).

#### 7.1.1.1 Pick Stock Freq

[illegible]

Here, you may select a date range and limit the number of records. - the tab will rank the stock by most **NUMBER** of picks (visits).

### 7.1.1.2 Shelf Life Enq

[illegible]

Here, the screen will show the longest shelf life, ranked by most out of date.

### 7.1.1.3 Owner



General Enquiries

Owner: ROB Warehouse: NFT 10-JUN-2025 WHS0115 v4.9

Stock Movement Pick Face Freq Pick Stock Freq Shelf Life Enq Owner

Date From: 03-JUN-2020 To: 10-JUN-2025

Orders: 1548  
Order Lines: 2982  
Volume: 71432.012

Owner	Orders	Order Lines	Order Volume
AJR	23	45	0
D1P	1391	2777	71344.315
EEC	91	119	1.857
KHN	20	19	84.84
POD	19	19	0
ROB	4	3	1

☐ Open  
☐ All

Refresh

Order Number	Order Lines	Volume	Type	Status	Cases	Full Name
AJR00000000000024076	1	0.000	H	On Pick List	50	CUSTOMER 1
AJR00000000000024093	1	0.000	H	On Pick List	80	CUSTOMER 1
AJR00000000000024078	1	0.000	H	On Pick List	40	CUSTOMER 1
AJR00000000000024080	1	0.000	H	On Pick List	63	CUSTOMER 1
AJR00000000000024081	1	0.000	H	On Pick List	80	CUSTOMER 1
AJR00000000000024060	3	0.000	H	On Pick List	350	CUSTOMER 1
AJR00000000000024061	4	0.000	H	On Pick List	457	CUSTOMER 1
AJR00000000000024064	5	0.000	H	On Pick List	394	CUSTOMER 1
AJR00000000000024065	3	0.000	H	On Pick List	216	CUSTOMER 1
AJR00000000000024087	1	0.000	H	On Pick List	63	CUSTOMER 1
AJR00000000000024091	1	0.000	H	On Pick List	70	CUSTOMER 1
AJR00000000000024049	3	0.000	H	On Pick List	189	CUSTOMER 1
AJR00000000000024055	5	0.000	H	On Pick List	630	CUSTOMER 1
AJR00000000000024072	1	0.000	H	On Pick List	56	CUSTOMER 1
AJR00000000000024073	1	0.000	H	On Pick List	56	CUSTOMER 1

Here, you may select a date range, and select whether this is Open or All. When you click **Refresh**, the orders will be displayed by owner.

A summary will be displayed at the top by owner. Below that, the selected order will show all order numbers and the current status.



## 8 WHS0904 Held Stock Enquiry

[illegible]

Here, you will be shown a summary of the details of the pallet, followed by a list of all held quantities and reasons, when the reason code is due for review and and freeze status against it.

- *Held*
- *Reason*
- *Review Date*
- *Freeze Time*
- *Freeze Ref*



# 9 WHS0906 Warehouse Stock Enquiry

This is the Warehouse Stock Enquiry screen.

Warehouse Stock Enquiry

Owner: ROB Warehouse: NFT10-JUN-2025WHS0906 v4.2

Location use Type : 1 Bulk Location

Use Bonded : ☒ Both ☐ Bonded ☐ Unbonded

Owner: ROB 001 RM

Stock: 0160120 DETOL ANTIBACTERIAL 10

Rotation No	Type	Bonded	Pallet / Cust Pallet	Cust Rotation No	On Hand Qty
+ BLK10		N	54 46	+	37/ 0

Details

To search, you must enter an owner, and may also enter a location use type, bonded type and/or stock code.

When found, the results will be shown in the table below. You can horizontally scroll the table for more details of each line.

You can view more details of the pallets and stock found by selecting a line and clicking **Details**. This will take you to the Stock Location Enquiry part of the Configurable Stock Location Enquiry screen [WHS0900](#), showing the details found.

Stock Location Enquiry

Owner: ROB Warehouse: NFT10-JUN-2025WHS0902 v4.22

Owner: ROB 001 RM

Bonded: N

Country of Origin:

Stock: SC02 Stock Code 02 Description 2 of SC02 Description 3 of SC02

Pack

Pallet: 47176 Cust Pallet: 6055 Location Code: 01113 Usage: BULK

On Hand: 50/ 0

Weight: 117 250 KGM

Rotation: 1212

Receipt Number: 7003

Held: 0/ 0

Weight: 0 000 KGM

Cust Rotation no: 1212

Date: 15-MAR-2019

Committed: 0/ 0

Weight: 0 000 KGM

Self-By Date: 23-MAY-2025

Catch Weight: 0 000 KGM

Allocated: 0/ 0

Weight: 0 000 KGM

Manu Date:

Stock Take In Progress: N

Free: 50/ 0

Weight: 117 250 KGM

Trans In: 0/ 0

Weight: 0 000 KGM

Trans Out: 0/ 0

Weight: 0 000 KGM

Movement Number: 0 To:

Reason Code	Hold Description	Held	Held Weight	Hold Reference	Review Date	Time	Overlap

Pallet Movements

Pallet Labels

## 10 WHS0915 Pallet Enquiry

This is the Pallet Enquiry screen.

The screenshot shows the 'Pallet Enquiry' window with the following details:

- Owner:** ROB, **Warehouse:** NFT, **Date:** 10-JUN-2025, **Version:** WHS0915 v4.40
- Pallet:** 47173, **Container No.:** (empty), **Pallet Total:** 48/ 0
- Rotation No.:** 1212, **Owner Batch ID:** 1212
- Customer Pallet:** 6052
- Owner:** ROB, **Unit:** 001
- Stock:** SC02 (highlighted), **Stock Code 02 Description 2 of SC02 Description 3 of SC02**, **Pack:** (dropdown)
- Weight (KGM) Summary:**
  - On Hand:** 48/ -10, **Weight:** 110 215
  - Committed:** 0/ 0, **Weight:** 0 000
  - Allocated:** 0/ 0, **Weight:** 0 000
  - Held:** 0/ 0, **Weight:** 0 000
  - Free:** 48/ 0, **Weight:** 112 560
- Owner Batch ID:** 1212, **Rotation No.:** 1212
- Location:** 01114, **Pick Location:** (button)
- Customer Pallet:** 6052
- Sell By:** 23-MAY-2025
- Manufacture Date:** (empty)
- Movement Audit:** 0, **Movement Location:** (empty)
- Receipt Advice:** 1212, **Receipt:** 15-MAR-2019
- Transfer In:** 0/ 0, **Transfer Out:** 0/ 0
- Bond:** N
- Grn No.:** 7003
- Pallet Type:** STD
- Catch Weight:** 0 000, **KGM:** (dropdown), **Stock Take In Progress?** N
- Pallet Qty:** 50, **Standard:** (dropdown)
- Buttons:** Hold Reasons, Pallet Labels

You can select data by Pallet, Rotation Number, Batch or customer pallet.

When found, the results will be displayed in the screen.

The screen will show the total pallet quantity, the breakdown of the stock codes and quantities on that pallet.

The screen will then summarise the quantities on the pallet:

- On Hand - the total amount of product that is in the warehouse that is on or originating at that pallet.
- Committed - any hard commitment for the specific stock on that pallet for a sales order.
- Allocated - any hard allocated stock where the stock is being used by an order and will be picked.
- Held - any quantity of stock that has been indicated (either by users or by the system) to not be able to be used for a particular reason.
- Transfer In - total quantity of product in the process being moved into that pallet from elsewhere
- Transfer Out - total quantity of product being moved off that pallet to elsewhere.
- Free - the total available to be used - a sum of the on (hand + transfer in) minus (committed + allocated + held + transfer out).

Also displayed are:

- Receipt information (such as receipt date, GRN and advice note number).
- Full pallet details (such as batch, rotation, stock code, Sell By and Manufacture dates).

Where there is a quantity held against the pallet, this may be for a number of reasons, both system and user. You can see those reasons and the quantity held for each reason by clicking **Hold Reasons**.



[illegible]

Here, you will be shown a summary of the details of the pallet, followed by a list of all held quantities and reasons, when the reason code is due for review and and freeze status against it.

- *Held*
- *Reason*
- *Review Date*
- *Freeze Time*
- *Freeze Ref*

You can print both pallet and case labels through the **Print Labels** button.

For serial numbered stock, you can press the **Serials** button to display serial numbers on that pallet.



Customer Pallet Enquiry				10-JUN-2025		WHS0916 v4.3	
Owner: ROB		Warehouse: NFT					
Owner: ROB		001		RM			
Customer Pallet No: 1649							
Stock: SC01		Stock Code 01					
Size: Pack				Bonded: N			
Rotation: 200700562				Usage:			
Location: 01012				Cust Pallet: 1649			
Pallet: 5200				GRN No: 1,256			
Owner Batch ID: 200700562				Pallet Qty: 0			
Pallet Type: STD		Standard		To:			
Weight: 0.00		KGM		Sell-By: 23-JAN-2008			
Movement: 0							
Receipt: 25-OCT-2007							
Manu Date:							
On Hand: 23/ 0		Free: 22/ 0		Committed: 0/ 0		Allocated:	
On Hand Weight: 28.382		Free Weight: 27.148		Committed Weight: 0.000		Allocated Weight:	
(KGM)		(KGM)		(KGM)		(KGM)	
View Held Stock				Print Label			

[illegible]



- *Held*
- *Reason*
- *Review Date*
- *Freeze Time*
- *Freeze Ref*

