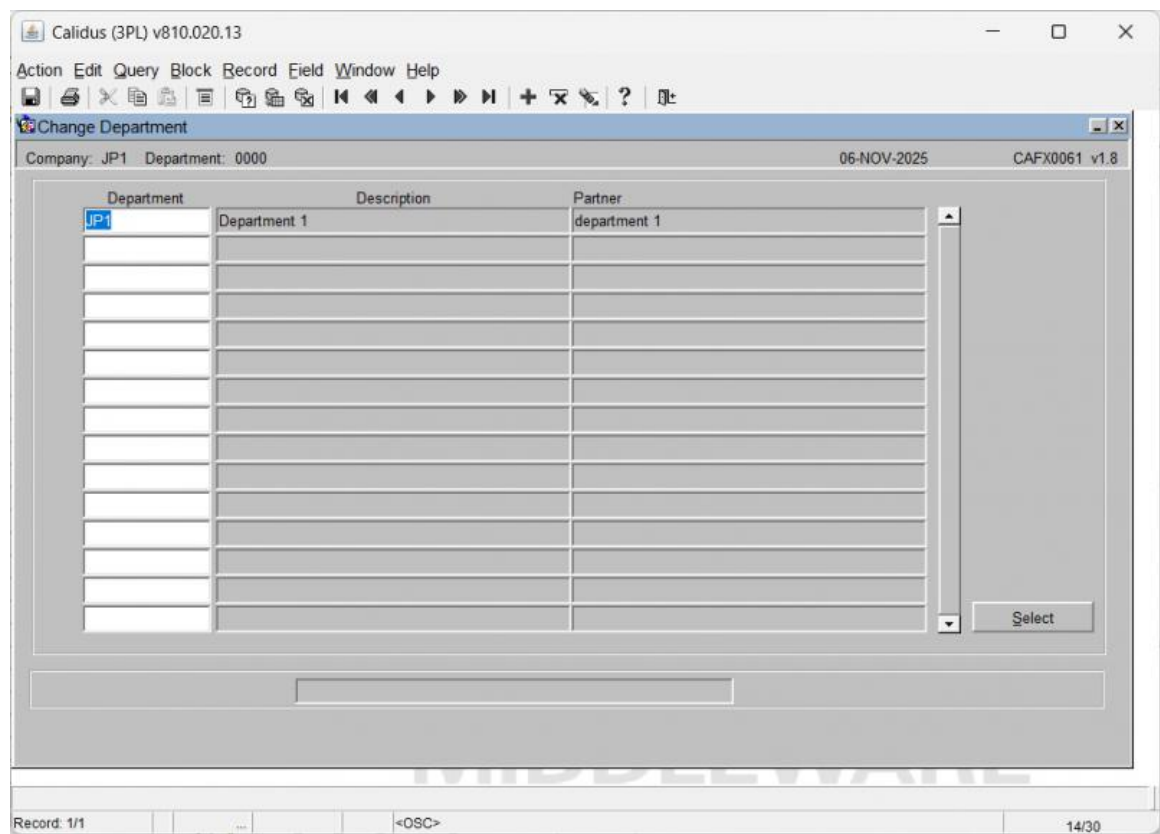


This is the *Change Department* screen (CAFX0061).



The following fields document the available department options:

Field Name

Description

- Department* The code or identifier for a specific department.
- Description* The descriptive name of the department.
- Partner* The name or code of the partner associated with the department.

Action Buttons

- **Select:** Finalizes the department selection and closes the selection screen.

Contents

1 HYFX0040 Change Company.....1

2 HYFX0070 Warehouse Change.....2

3 HYFX0091 Owner Change.....3

4 Category:Menus.....4

5 Category:System Config.....5

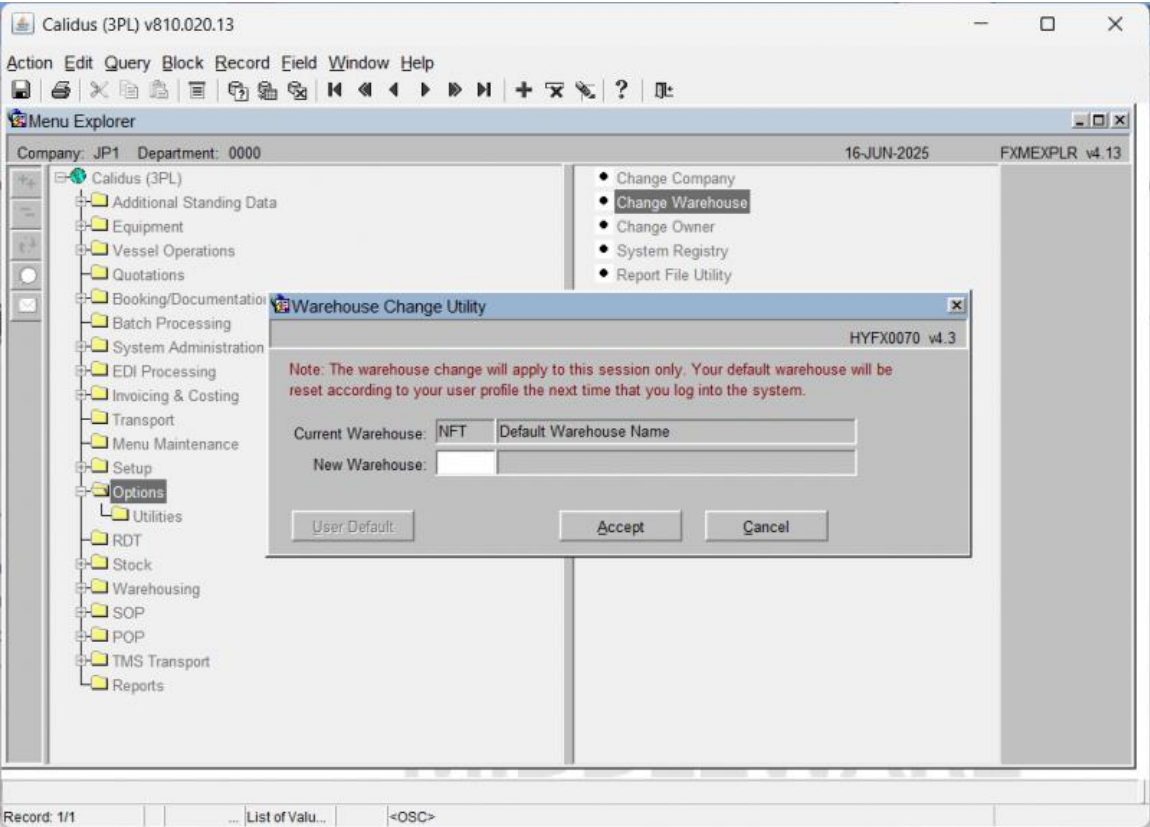
6 Category:System Enquiries.....6

7 WHS7921 WCS Message Reprocessing.....7



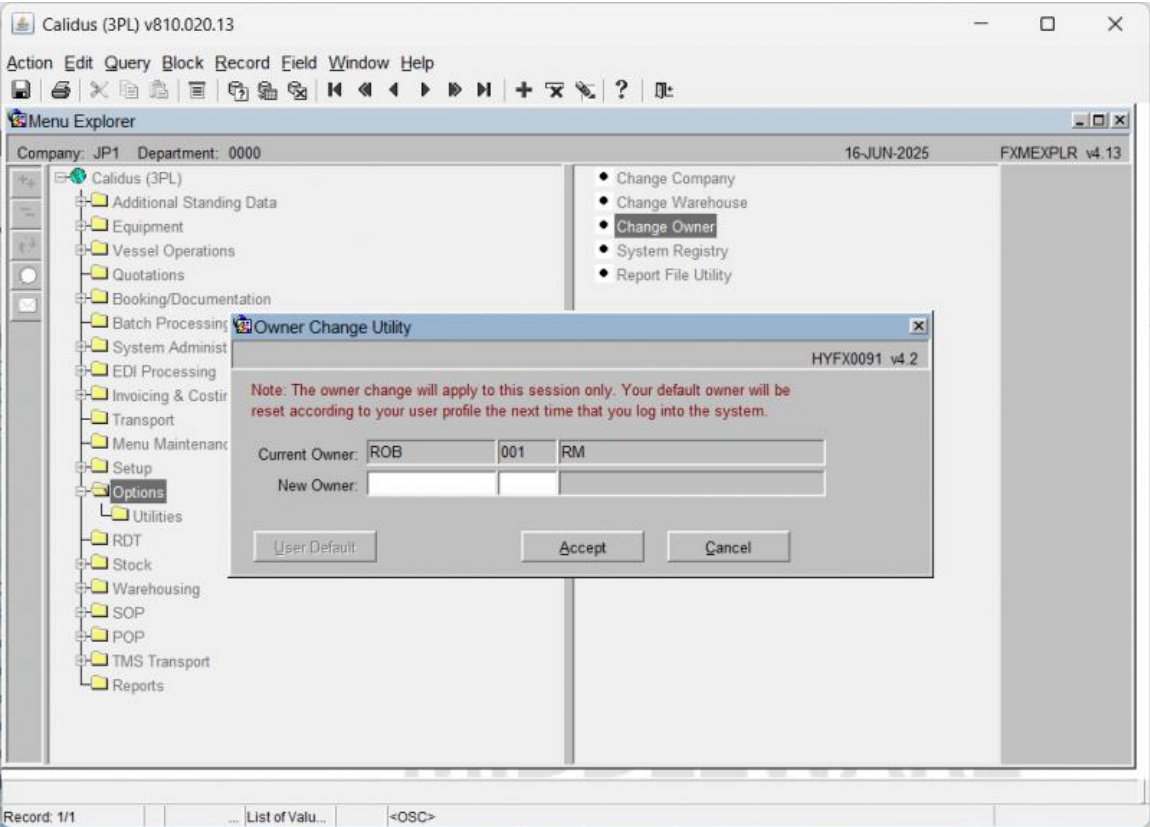
2 HYFX0070 Warehouse Change

Here, you can select the warehouse that you are defaulting to.



3 HYFX0091 Owner Change

Here, you can change the Owner that you are using.



4 Category:Menus

This page shows all pages relating to Menus, Users and access control.



5 Category: System Config



6 Category: System Enquiries

This page lists all system enquiries.



The message type indicates what function the message is trying to do. For example, the 611 message is a pick confirmation and pallet move (moving the pallet from the pick face to the marshalling location). The 601 message is the Receipt update message, see below for the full list.

WCS Message Reprocessing

Owner: D23 Warehouse: W0512-FEB-10WHS7921 v4.1

Queue

Status

Date12-FEB-10

Queue	Status	Time queued	No. Retries	Type	Description
AQ\$_QTABL_VMSWCS_E	EXPIRED	12-FEB-2010 15:09:54	6	601	PALCRE
AQ\$_QTABL_VMSWCS_E	EXPIRED	12-FEB-2010 15:09:54	6	601	PALCRE
AQ\$_QTABL_VMSWCS_E	EXPIRED	12-FEB-2010 15:09:54	6	601	PALCRE

In order to resend a message, right click on the highlighted line and choose ?Process?. You can also view the message - however it is one large text string so the contents are not immediately obvious. The message will then be sent to the queue and processing will be run again.



WCS Message Reprocessing

Owner: D23 Warehouse: W05 12-FEB-10 VHS7921 v4.1

Queue:
 Status:
 Date: 12-FEB-10

Queue	Status	Time queued	No. Retries	Type	Description
AQ\$_QTABL_VMSWCS_E	EXPIRED	12-FEB-2010 15:09:54	6	View Process	PALCRE
AQ\$_QTABL_VMSWCS_E	EXPIRED	12-FEB-2010 15:09:54	6		PALCRE
AQ\$_QTABL_VMSWCS_E	EXPIRED	12-FEB-2010 15:09:54	6		PALCRE

The message will only fully process if it is able - if there is a data issue the message could expire again. Where it failed originally due to record locks it should re-process as long as the lock blocking it has been released.

List of the most commonly used RF messages

- 601 - Receipt Update
- 611 - Pallet Move Update
- 621 - Pick Update
- 631 - Aisle Status Update
- 651 - Pallet Enquiry
- 671 - Stock Take Update
- 681 - Despatch Update
- 691 - Location C/D Validation
- 711 - Location Enquiry
- 721 - Owner Validation
- 751 - Pack/Shipment Update
- 999 - WMS Interface

