

# **Despatch by RouteLoad**

Aptean Ltd  
Copyright © 2011-2026.

# Contents

- 1 Despatch by RouteLoad.....1
  - 1.1 Goods Out - Despatch by Route/Load.....1
- 2 Document History.....6

# 1 Despatch by RouteLoad

<br>

## 1.1 Goods Out - Despatch by Route/Load

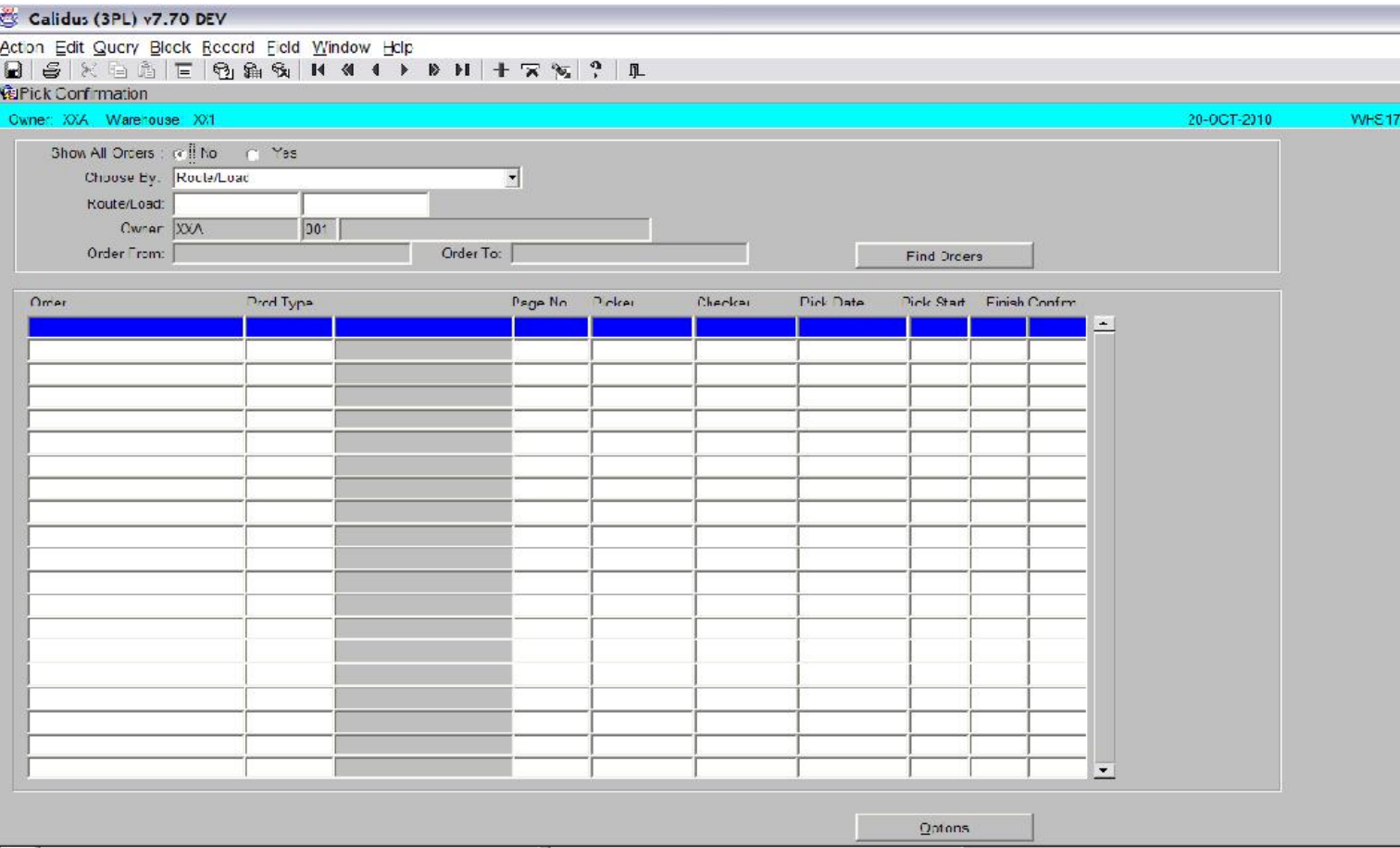
<br>

The Despatch by Route/Load screen is used to confirm the despatch of order from the warehouse.

The system will reduce the stock from warehouse.

The Despatch by Route/Load screen is located in the Sales Allocation & Picking folder.

The following section covers how to despatch a single order. <br>



<br>

Select 'Order Number' from the 'Choose By' drop down box. The 'Route/Load' field will now be greyed out. <br>



Galidus (SPL) v7.70 DEV

Action Edit Query Block Record Field Window Help

Despatch Confirmation

Owner: XSA Warehouse: X01 20-OCT-2010 V01 1310 4.40

Choose by: Order Number

Route: Loads:

Name: XSA X01

Order:

Delivery No:

Custom Code:

Order	Page	Date	Marshalling Location	Qty to Despatch	Confirmed

Changed

Options

Print

<br\>

Enter the order you wish to despatch in the ?Order? field. Note: You can use the list of values icon to select your order.

<br\>



[illegible]

<br\>

Press the execute query icon to bring up the detail for the order. <br>

[illegible]

<br\>



Press the ?Confirm? button (see screen shot above) <br>

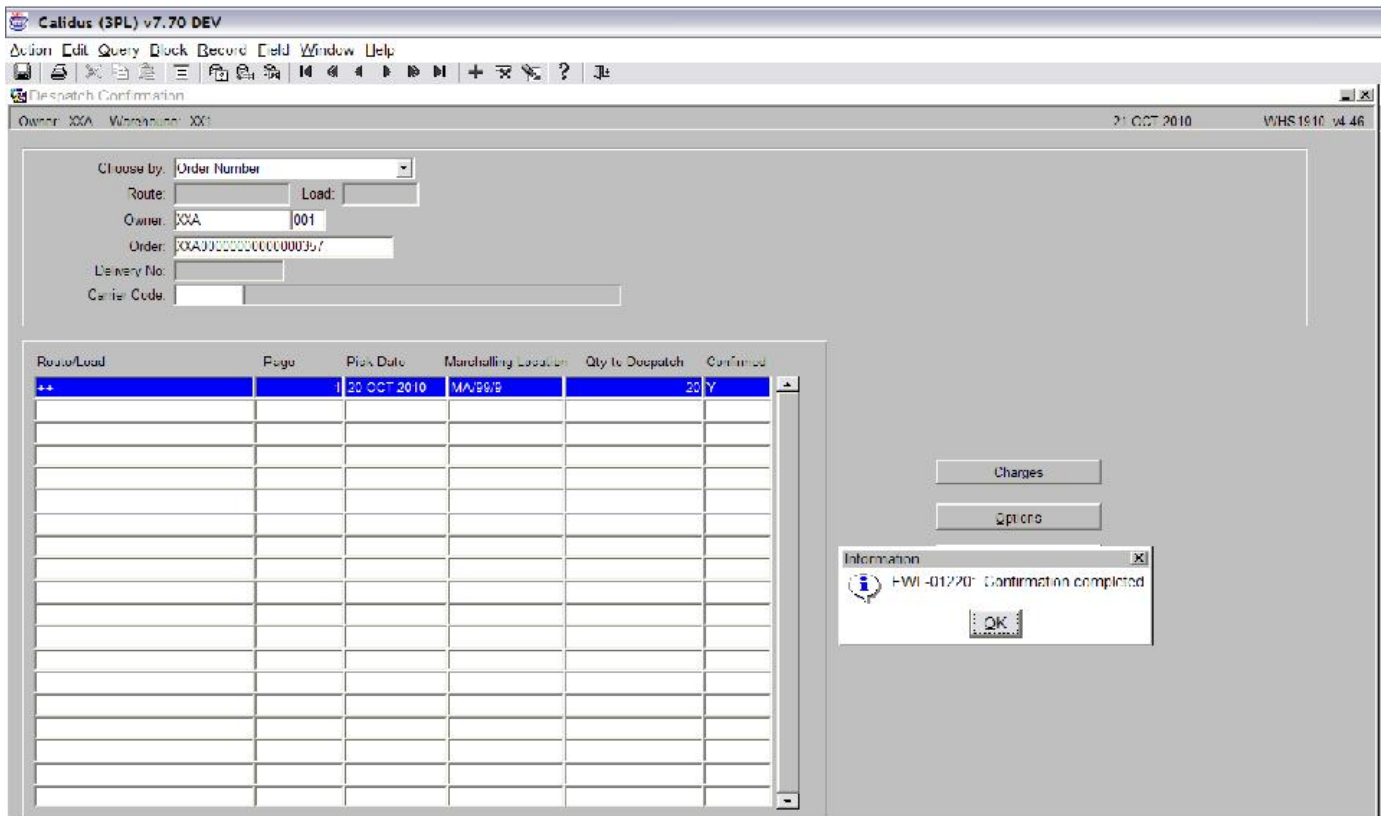
[illegible]

<br\>

Enter the despatch date and time. You can tab through the fields if you wish to default to today's date and time. Press the Confirm button to despatch the order. <br>

A message will be displayed showing that the order has been dispatched. <br>





<br\>



## 2 Document History

Version	Date	Status	Reason	Initials
Version 1	09/11/2010	Released		LBW

Copyright Aptean © 2008

The information contained herein is the property of Aptean and is supplied without liability for errors or omissions. No part may be reproduced or used except as authorised by contract or other written permission. The copyright and foregoing restriction on reproduction and use extend to all media in which the information may be embodied

