

# **ENQSOOP01A**

Aptean Ltd  
Copyright © 2011-2026.

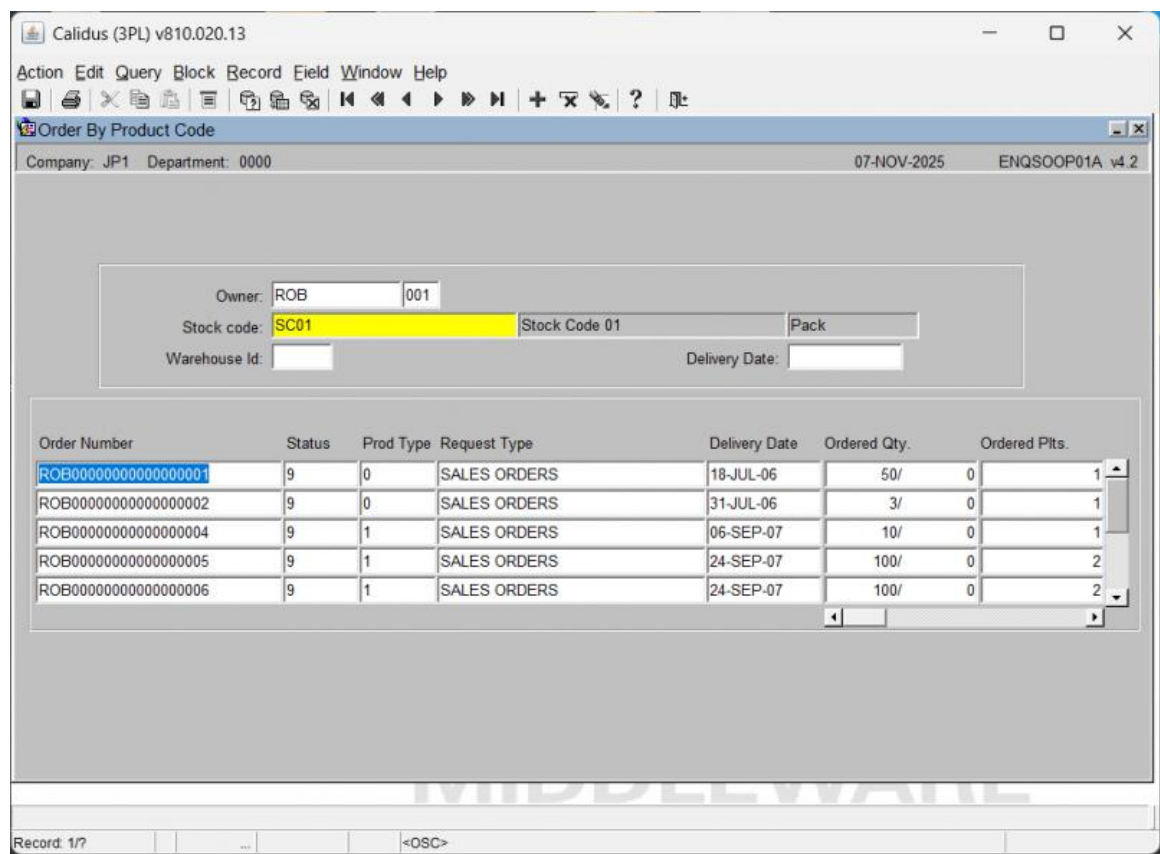
# Contents

1 ENQSOOP01A.....1

1.1 Order List Grid.....1

# 1 ENQSOOP01A

This is the *Order By Product Code* screen (ENQSOOP01A).



The following fields document the enquiry parameters:

Field Name	Description
Owner	The identifier for the owner of the stock or order.
Stock code	The unique code identifying the product. <b>(Required Entry)</b>
Warehouse Id	The unique identifier of the warehouse location.
Stock Code 01	A secondary field for a stock code, possibly for a variant or related item.
Pack	The packaging type or size being queried.
Delivery Date	The date the delivery is scheduled or was completed.

## 1.1 Order List Grid

This table displays the full list of order details related to the product code enquiry, combining columns visible across all provided screenshots:

Field Name	Description
Order Number	The unique sales order number.
Status	A numerical code indicating the current status of the order.
Prod Type	The classification or type of product in the order.
Request Type	The business context or type of request (e.g., SALES ORDERS).
Delivery Date	The date the order was delivered or scheduled for delivery.
Ordered Qty.	The quantity originally requested on the order.
Ordered Plts.	The number of pallets ordered.
Allocated Wt. (KGM)	The weight of the stock that has been allocated for the order, measured in Kilograms.
Despatched Qty.	The quantity that has been shipped or despatched.
Despatched Wt. (KGM)	The weight of the stock that has been despatched, measured in Kilograms.
Committed Wt. (KGM)	The weight of the stock that has been committed/reserved for the order, measured in Kilograms.
Committed Plts.	The number of pallets that have been committed/reserved for the order.



<b>Field Name</b>	<b>Description</b>
<i>Ordered Wt. (KGM)</i>	The weight of the stock originally ordered, measured in Kilograms.
<i>Allocated Qty.</i>	The quantity of stock that has been allocated for the order.

