

ENQSOOP02A

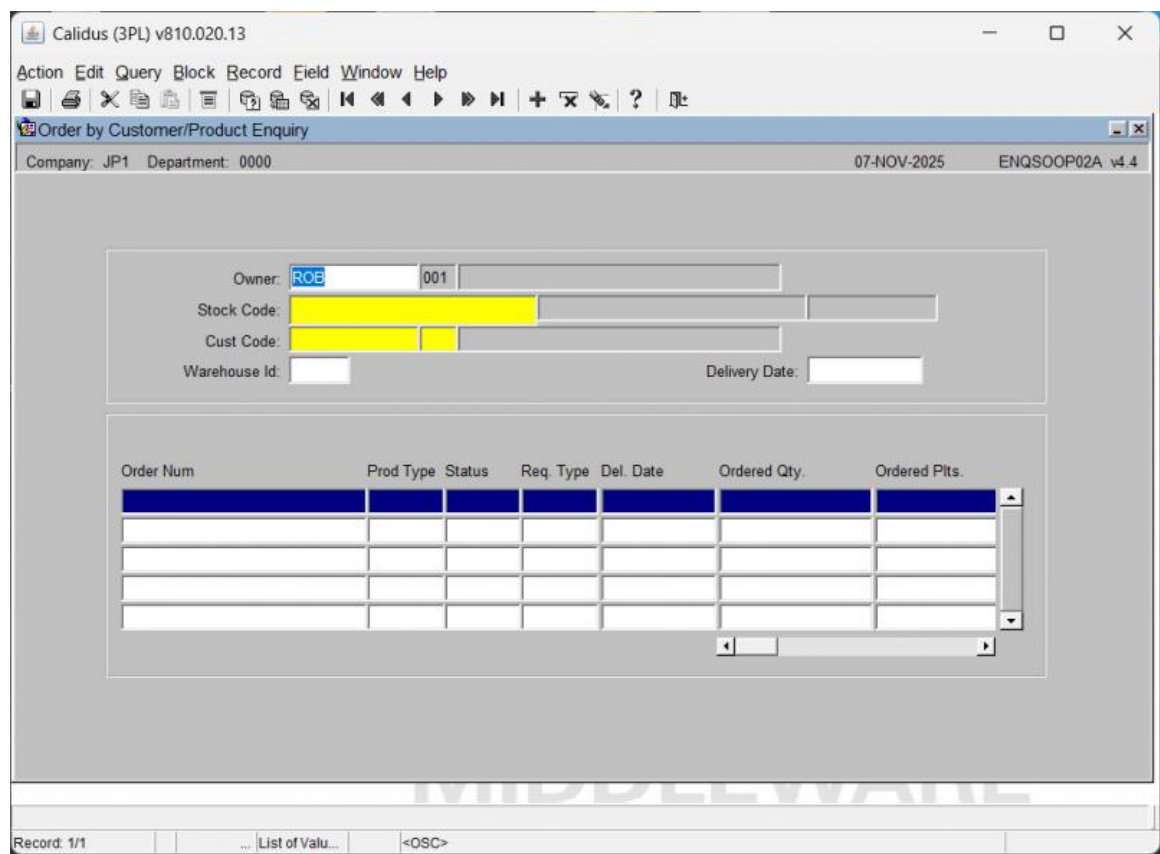
Aptean Ltd
Copyright © 2011-2026.

Contents

1	ENQSOOP02A.....	1
1.1	Order List Grid.....	1

1 ENQSOOP02A

This is the *Order by Customer/Product Enquiry* screen (ENQSOOP02A).



The following fields document the enquiry parameters:

Field Name	Description
Owner	The identifier for the owner of the order.
Stock Code	The unique code identifying the product. (Required Entry)
Cust Code	The identifier for the customer associated with the order. (Required Entry)
Warehouse Id	The unique identifier of the warehouse location.
Delivery Date	The date the delivery is scheduled or was completed.

1.1 Order List Grid

This table displays the full list of order details, combining columns visible across all provided screenshots:

Field Name	Description
Order Num	The unique sales order number.
Prod Type	The classification or type of product in the order.
Status	A numerical code indicating the current status of the order.
Req. Type	The business context or type of request (e.g., Sales Orders).
Del. Date	The date the order was delivered or scheduled for delivery.
Ordered Qty.	The quantity originally requested on the order.
Ordered Plts.	The number of pallets ordered.
Allocated Qty.	The quantity of stock that has been allocated for the order.
Allocated Plts.	The number of pallets that have been allocated for the order.
Allocated Wt.	The weight of the stock that has been allocated for the order.
Committed Plts.	The number of pallets committed/reserved for the order.
Committed Wt.	The weight of the stock committed/reserved for the order.
Despatched Plts.	The number of pallets that have been shipped or despatched.



Field Name	Description
<i>Despatched Wt.</i>	The weight of the stock that has been shipped or despatched.

