

How to Set Up a Printer

Aptean Ltd
Copyright © 2011-2026.

Contents

- 1 How to Set Up a Printer.....1
 - 1.1 Obtaining the printer.....1
 - 1.2 Printer configuration and Maintenance.....1

1 How to Set Up a Printer

1.1 Obtaining the printer

Obtain the printer name as held on the print server from either the system administrator or logon on to the print server and execute the 'lpstat' command to list all printers on the server.

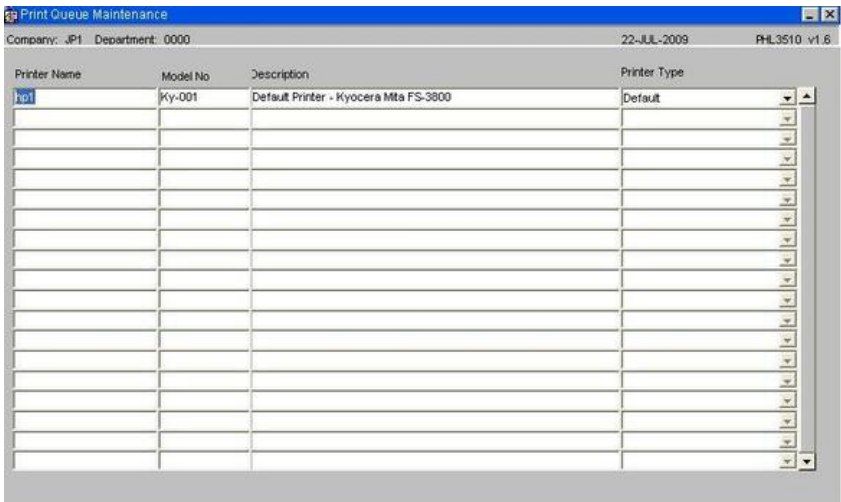
```
v770-DEV(lbw)$ lpstat
Queue    Dev      Status   Job Files      User      PP %    Blks  Cp Rnk
-----
hp1      hp@hp    READY
```

1.2 Printer configuration and Maintenance

Below are the steps required to set up a printer on the WMS system

1.2.1 Print Queue Maintenance (PHL3510)

Used to link printers on the print server to the WMS application



Field Name	Description	Options	Generic Value
Printer Name	Name of the printer as held on the server	The field is case sensitive and must match the name on the server (see below)	Defined by site
Model No	Model Number of the printer	Free text field	Defined by site
Description	Free text field	Printer name as known in the warehouse	Defined by site
Printer Type	As selected from the drop down list		Default - HP Laser Jet - Line Printer

1.2.2 Printer Groups (PHL3520)

The screen is used to group printers together, which might be by type, such as all zebra printers or possibly by area such as a warehouse or an area within a warehouse.



Printer Name	Description
hp3	Laser
zeb140	Barcode Printer for Labels
kyo3	Shipping Room Printer

Field Name	Description	Options	Generic Value
<i>Printer Name</i>	Name of the printer as held on the server	The field is case sensitive and must match the name on the server (see below)	Defined by site
<i>Group Name</i>	Specifies the group name for the selected printers	20 character free text field	Defined by site
<i>Desc</i>	Descriptive name of the Printer group	180 character free text field	Defined by site
<i>Printer Name</i>	The Printer name as held on the server	Must exist in Print Queue Maintenance	Selection from LOV of existing printers

1.2.3 Output Manager (Runjob)

This screen allows the user to specify the device the print job is to be sent to, such as to screen or to a printer etc.

The output manger will default in the last Printer Group and Printer used, though there is the option to select an alternative if required.

1.2.4 Default Printers Maintenance (WHS0002)

The form is used to assign a default printer for specific documentation such as a report or label print to a user.





 Note: Not all programs, reports and label formats are called from this screen. Below is a list of current programs which use this functionality. Aptean will advise which report and label formats can be used.

Field Name	Description	Options	Generic Value
<i>Owner</i>	Client or owner code as set-up on the system	The user will be able to select from a list of valid owner codes	Defined by site
<i>Program</i>	The calling program that will generate the report or label output	The program id is entered followed by an underscore character and the user id of the person who will require the print option.	Existing program that can call the Output Manager
<i>Description</i>	Description of the process as entered in the program field	Will default from system level information	N/a
<i>Printer</i>	The default printer the print job is to be sent to	As maintained in Printer Queue Maintenance	Defined by the client
Buttons			
SWAP Printer	Allows the user to change a printer for another one without having to change each line.		

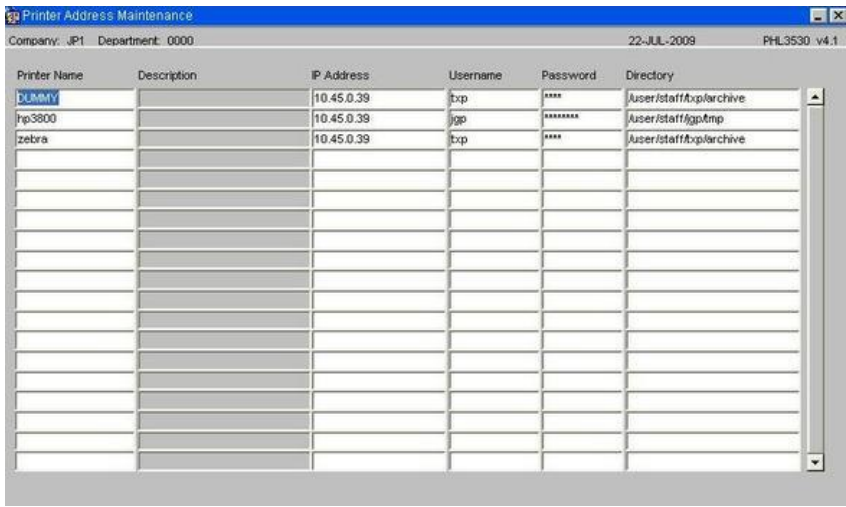
The following is a table of existing programs that are called by the Default Printer Maintenance Screen:

Calling Program	Description
WHS0150	Goods Receipt - Conf
WHS0520	Generated Pallet Movements
WHS0530	Driver Ticket Reprint
WHS0630	Stock Adjustments
WHS0700	Stock Movements
WHS0710	Generate Stock Movements
WHS0915	Pallet Enquiry
WHS1714	Pick List Confirmation
WHS1900	Despatch Print
WHS1910	Despatch by Route/Load
WHS1941	Shipment Label Print
WHS1945	Order Packing
WHS2054	Change Ownership of Stock
WHS7886	Goods Receipt Using RDT
WHR1702	Picking Label Program
WHS1700	Pick List
WHS1710	Pick List Confirmation
WHS1721	Packing List



1.2.5 Printer Address Maintenance (PHL3530)

Used to automatically send print jobs to an external 3rd party server for printing, this is achieved by sending a flat file directly via ftp, circumventing the need to run the job through the XF monitor process.



Field Name	Description	Options	Generic Value
Printer Name	Name of the printer as held on the server	Printer associated with a specific packing station or stations	Defined by site
I.P. Address	I.P. address of the external server		Defined by site
Username	Username of the account on the external server		Defined by site
Password	Password of the account on the server		Defined by site
Directory	Directory where the print job is to be delivered		Defined by site

