

# **SOS1640 Service Levels Report**

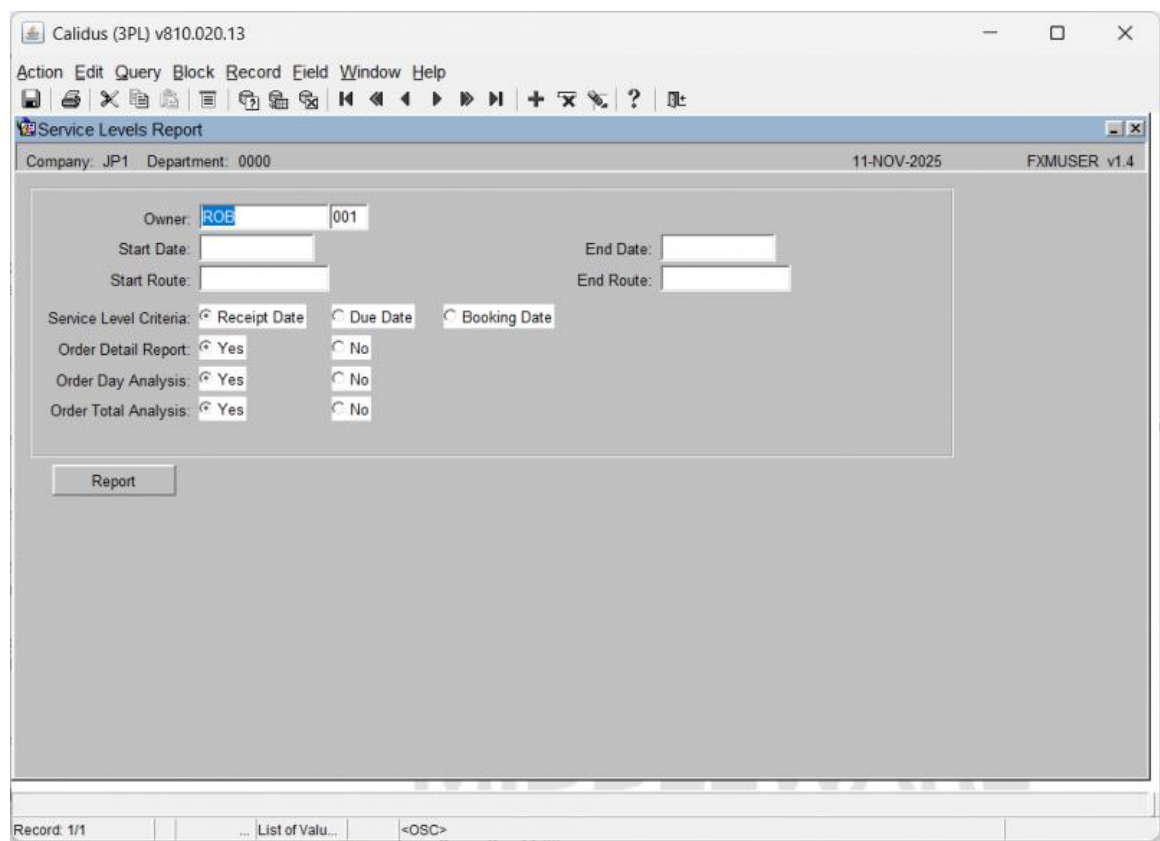
Aptean Ltd  
Copyright © 2011-2025.

# Contents

1 SOS1640 Service Levels Report.....1

# 1 SOS1640 Service Levels Report

This is the *Service Levels Report* screen (SOS1640).



The following fields document the report parameters:

Field Name	Description
Owner	The identifier for the owner of the data (e.g., ROB 001).
Start Date	The calendar start date for the service level reporting period.
End Date	The calendar end date for the service level reporting period.
Start Route	The starting route code for the report range.
End Route	The ending route code for the report range.
Service Level Criteria	The criteria date type to be used for the report ( <i>Receipt Date</i> , <i>Due Date</i> , or <i>Booking Date</i> ).
Order Detail Report	Radio button selection (Yes/No) to include detailed order line information.
Order Day Analysis	Radio button selection (Yes/No) to include order analysis by day.
Order Total Analysis	Radio button selection (Yes/No) to include order total analysis.
Action Buttons:	

- **Report:** Executes the generation of the Service Levels Report.

