

**STKPRTY01A**

Aptean Ltd  
Copyright © 2011-2025.

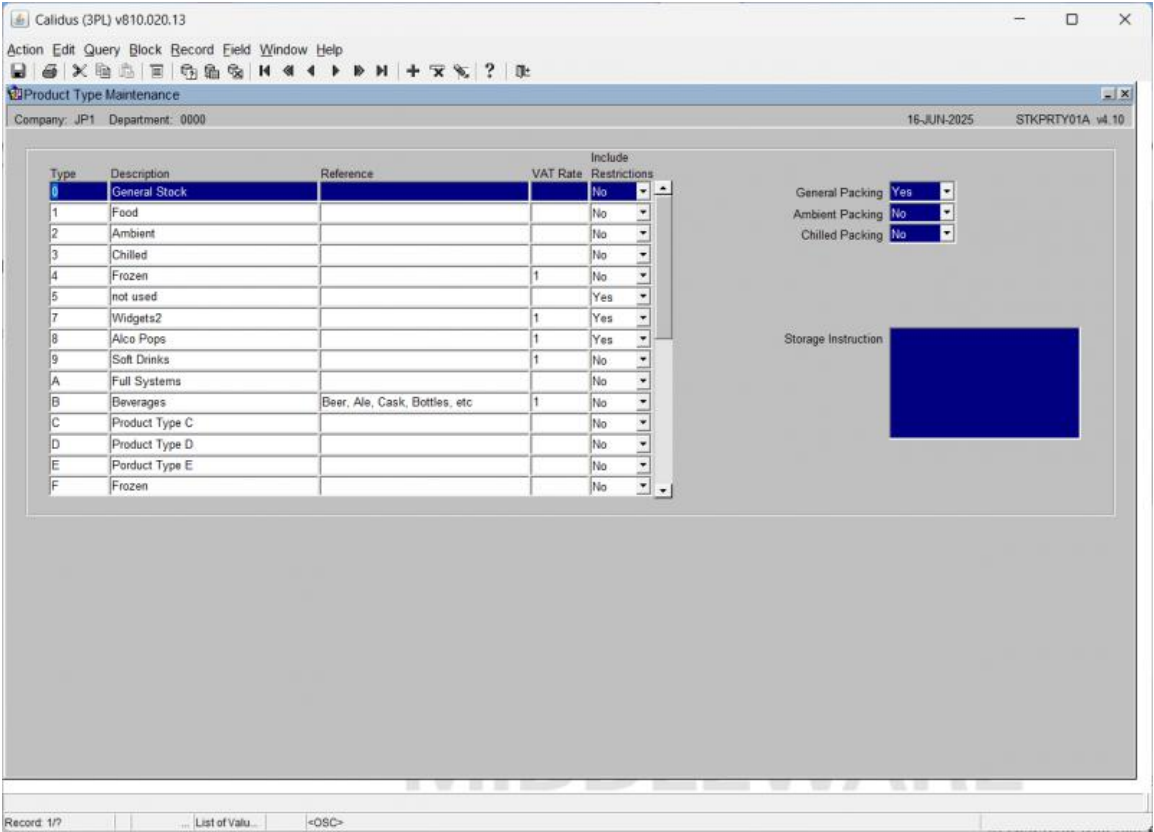
Contents

1 STKPRTY01A.....1

# 1 STKPRTY01A

Product type configuration is a pre-requisite to the configuration of products, given that product type is a mandatory field in the product configuration. Product types enable the grouping of stock, usually by physical classification. For example, frozen, chilled or ambient products may each be assigned a distinct product type, this will have an impact on how orders are processed and displayed in the system.

**Note:** If an order is made up of multiple product types, the system will allow individual allocation and picking by product type, in effect splitting the pick list.



**Note:** If RF is enabled there will be the option to send the entire table to the WCS (**Send RF Data**). All amended or newly created records are automatically sent to the WCS on update of the record.

Field Name	Description	Options	Generic Values
Type	Specifies a particular product type. Product type differentiation enables separation of sales order processing via pick wave building.	1 character free text field	Defined by the client
Description	Describes the product type as above	30 character free text field or left blank	Defined by the client
Reference	Used with Owner Charging and Invoicing	30 character free text field or left blank	Defined by the client
VAT Rate	Used with Owner Charging and Invoicing	30 character free text field or left blank	Defined by the client
Include Restrictions		Yes, No	Defined by the client
General Packing	Defines the General Packing process. Selecting this will disable Ambient and Chilled Packing.	Yes, No	



Field Name	Description	Options	Generic Values
<i>Ambient Packing</i>	Defines the Ambient Packing process. Selecting this will disable General and Chilled Packing. This will also enable Temp Controlled Yes/No and Def Amb Temp Monitor.	Yes, No	
<i>Chilled Packing</i>	Defines the Chilled Packing process. Selecting this will disable General and Ambient Packing.	Yes, No	
<i>Storage Instructions</i>	Free text storage instructions	Free Text	
<i>Temp Controlled Yes/No</i>	Enabled when Ambient Packing is enabled.	Yes, No	
<i>Def Amb Temp Monitor</i>	Enabled when Ambient Packing is enabled.	List of Values	
<i>Def Chill Temp Monitor</i>	Enabled when Chilled Packing is enabled.	List of Values	

