

STKSTOC03 NOMS Stock Maintenance

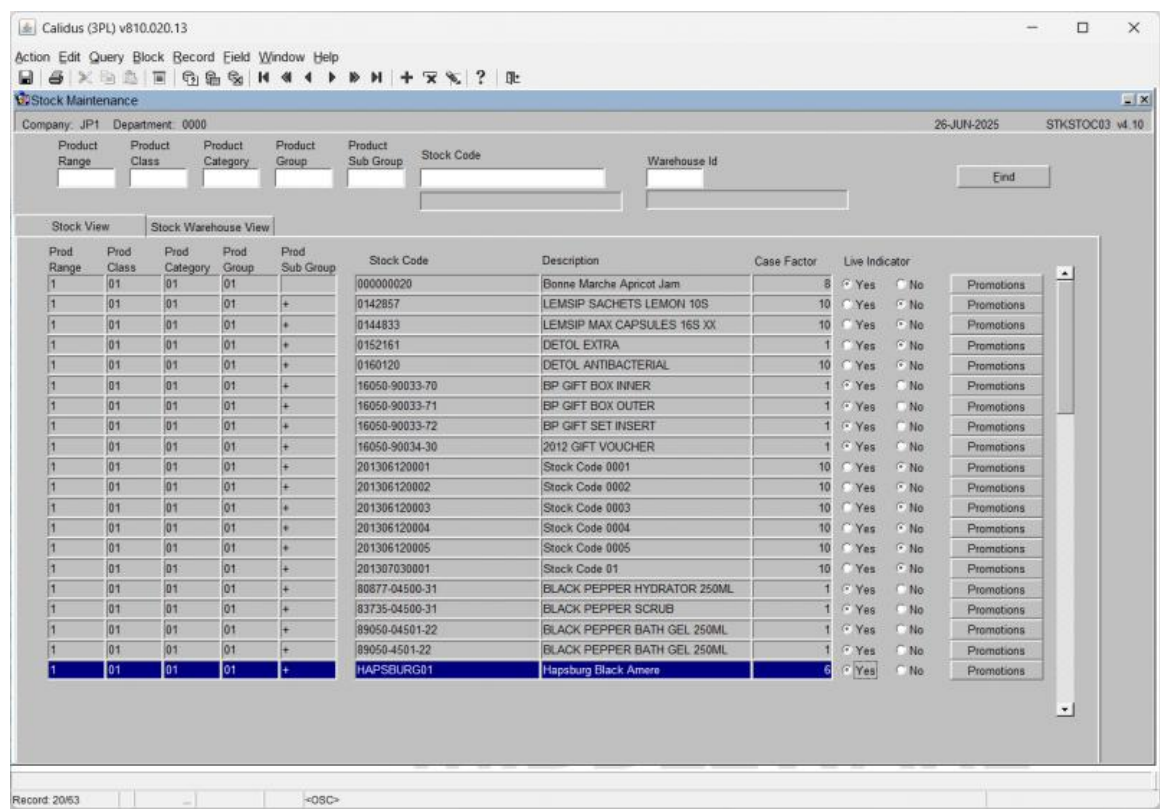
Aptean Ltd
Copyright © 2011-2025.

Contents

1 STKSTOC03 NOMS Stock Maintenance.....1

1 STKSTOC03 NOMS Stock Maintenance

This is the NOMS-specific product maintenance screen.



Here, you may select existing product class information or enter new product classes through optionally entering:

- Range
- Class
- Category
- Group
- Sub Group
- Stock Code
- Warehouse ID

Then, when the **Select** button is hit, this will display the matching data in the tables below. These are split into two tabs:

Stock View tab:

This displays the found product classes and product details such as:

- Range
- Class
- Category
- Group
- Sub Group
- Stock Code
- Description
- Case Factor
- Live Indicator
- **Promotions:** A button which shows any promotion on the sale of this product.

When data is found, you may click the **Promotion** button against the line to view or enter promotions against the product selected.

This shows the Promotions window:



[illegible]

Here you can see all promotions associated to a particular product.

You may enter:

- *Promotional Description*: A description of the promotion as required.
- *Promotion Type*: Select the type from a DDL of *Seasonal* or *Promotional*.
- *Date From/To*: The applicable date range to the promotion.
- *Freeze Flag*: Whether the promotion is to be temporarily frozen from this point.
- *Freeze End Date*: If frozen, the date that the freeze ends.
- *Profile*

When entered or amended, use **Save** to save the changes.

Stock Warehouse View tab:

This displays stock warehouse information per product.



Calidus (3PL) v810.020.13

Action Edit Query Block Record Field Window Help

Stock Maintenance

Company: JP1 Department: 0000 26-JUN-2025 STKSTOC03 v4.10

Product Range Product Class Product Category Product Group Product Sub Group Stock Code Warehouse Id

End

Stock View Stock Warehouse View

Warehouse Id	Stock Code	Order Demand Status	Order Full Pallets	Live Indicator	Promotions	Reserved
101	0142857	Withdrawn	<input type="radio"/> Yes <input type="radio"/> No	<input type="radio"/> Yes <input type="radio"/> No	Promotions	Reserved
101	0144833	Withdrawn	<input type="radio"/> Yes <input type="radio"/> No	<input type="radio"/> Yes <input type="radio"/> No	Promotions	Reserved
101	0152161	Withdrawn	<input type="radio"/> Yes <input type="radio"/> No	<input type="radio"/> Yes <input type="radio"/> No	Promotions	Reserved
101	0160120	Withdrawn	<input type="radio"/> Yes <input type="radio"/> No	<input type="radio"/> Yes <input type="radio"/> No	Promotions	Reserved
D1P	SC01_001		<input type="radio"/> Yes <input type="radio"/> No	<input type="radio"/> Yes <input type="radio"/> No	Promotions	Reserved
D1P	SC01_051		<input type="radio"/> Yes <input type="radio"/> No	<input type="radio"/> Yes <input type="radio"/> No	Promotions	Reserved
D1P	SC01_052		<input type="radio"/> Yes <input type="radio"/> No	<input type="radio"/> Yes <input type="radio"/> No	Promotions	Reserved
D1P	SC01_060		<input type="radio"/> Yes <input type="radio"/> No	<input type="radio"/> Yes <input type="radio"/> No	Promotions	Reserved
D1P	SC01_065		<input type="radio"/> Yes <input type="radio"/> No	<input type="radio"/> Yes <input type="radio"/> No	Promotions	Reserved
D1P	SC01_086		<input type="radio"/> Yes <input type="radio"/> No	<input type="radio"/> Yes <input type="radio"/> No	Promotions	Reserved
D1P	SC01_088		<input type="radio"/> Yes <input type="radio"/> No	<input type="radio"/> Yes <input type="radio"/> No	Promotions	Reserved
NFT	000000020	Withdrawn	<input type="radio"/> Yes <input type="radio"/> No	<input type="radio"/> Yes <input type="radio"/> No	Promotions	Reserved
NFT	0142857	Withdrawn	<input type="radio"/> Yes <input type="radio"/> No	<input type="radio"/> Yes <input type="radio"/> No	Promotions	Reserved
NFT	0144833	Withdrawn	<input type="radio"/> Yes <input type="radio"/> No	<input type="radio"/> Yes <input type="radio"/> No	Promotions	Reserved
NFT	0152161	Withdrawn	<input type="radio"/> Yes <input type="radio"/> No	<input type="radio"/> Yes <input type="radio"/> No	Promotions	Reserved
NFT	0160120	Withdrawn	<input type="radio"/> Yes <input type="radio"/> No	<input type="radio"/> Yes <input type="radio"/> No	Promotions	Reserved
NFT	201306120001	Withdrawn	<input type="radio"/> Yes <input type="radio"/> No	<input type="radio"/> Yes <input type="radio"/> No	Promotions	Reserved
NFT	201306120002	Withdrawn	<input type="radio"/> Yes <input type="radio"/> No	<input type="radio"/> Yes <input type="radio"/> No	Promotions	Reserved
NFT	201306120003	Withdrawn	<input type="radio"/> Yes <input type="radio"/> No	<input type="radio"/> Yes <input type="radio"/> No	Promotions	Reserved
NFT	201306120004	Withdrawn	<input type="radio"/> Yes <input type="radio"/> No	<input type="radio"/> Yes <input type="radio"/> No	Promotions	Reserved
NFT	201306120005	Withdrawn	<input type="radio"/> Yes <input type="radio"/> No	<input type="radio"/> Yes <input type="radio"/> No	Promotions	Reserved
NFT	201307030001	Withdrawn	<input type="radio"/> Yes <input type="radio"/> No	<input type="radio"/> Yes <input type="radio"/> No	Promotions	Reserved

Record 1/?

You can change:

- Order Demand Status
- Order Full Pallets
- Live Indicator
- **Promotions**: A button which shows any promotion on the sale of this product. This is the same as the **Reservations** button above.
- **Reserved**: A button which shows any reservations on the sale of this product.

When amended, use **Save** to save the changes.

The **Reserved** button shows the reserved Po Qtys for that product:



Calidus (3PL) v810.020.13

Action Edit Query Block Record Field Window Help

Reserved Po Qty

Warehouse Id: 101 Stock Code: 0142857 Description: LEMSIP SACHETS LEMON 10S Case Factor: 10

Date From: 26-JUN-2025 Date To: 28-JUN-2025 Reserved Qty: 10

Close

Item	Stock Code	Description	Live Indicator	Promotions	Reserved
D1P	SC01_051		<input type="radio"/> Yes <input type="radio"/> No	Promotions	Reserved
D1P	SC01_052		<input type="radio"/> Yes <input type="radio"/> No	Promotions	Reserved
D1P	SC01_060		<input type="radio"/> Yes <input type="radio"/> No	Promotions	Reserved
D1P	SC01_065		<input type="radio"/> Yes <input type="radio"/> No	Promotions	Reserved
D1P	SC01_086		<input type="radio"/> Yes <input type="radio"/> No	Promotions	Reserved
D1P	SC01_088		<input type="radio"/> Yes <input type="radio"/> No	Promotions	Reserved
NFT	000000020	Withdrawn	<input type="radio"/> Yes <input type="radio"/> No	Promotions	Reserved
NFT	0142857	Withdrawn	<input type="radio"/> Yes <input type="radio"/> No	Promotions	Reserved
NFT	0144833	Withdrawn	<input type="radio"/> Yes <input type="radio"/> No	Promotions	Reserved
NFT	0152161	Withdrawn	<input type="radio"/> Yes <input type="radio"/> No	Promotions	Reserved
NFT	0160120	Withdrawn	<input type="radio"/> Yes <input type="radio"/> No	Promotions	Reserved
NFT	201306120001	Withdrawn	<input type="radio"/> Yes <input type="radio"/> No	Promotions	Reserved
NFT	201306120002	Withdrawn	<input type="radio"/> Yes <input type="radio"/> No	Promotions	Reserved
NFT	201306120003	Withdrawn	<input type="radio"/> Yes <input type="radio"/> No	Promotions	Reserved
NFT	201306120004	Withdrawn	<input type="radio"/> Yes <input type="radio"/> No	Promotions	Reserved
NFT	201306120005	Withdrawn	<input type="radio"/> Yes <input type="radio"/> No	Promotions	Reserved
NFT	201307030001	Withdrawn	<input type="radio"/> Yes <input type="radio"/> No	Promotions	Reserved

FRM-40352: Last record of query retrieved.

Record: 2/2

<OSC>

Here you can enter

- *Date From*: The start of the reservation. This may not be before today's date.
- *Date To*: The end of the reservation.
- *Reserved Qty*.

When entered or amended, use **Save** to save the changes.

