

Stock Code Copy

Aptean Ltd
Copyright © 2011-2025.

Contents

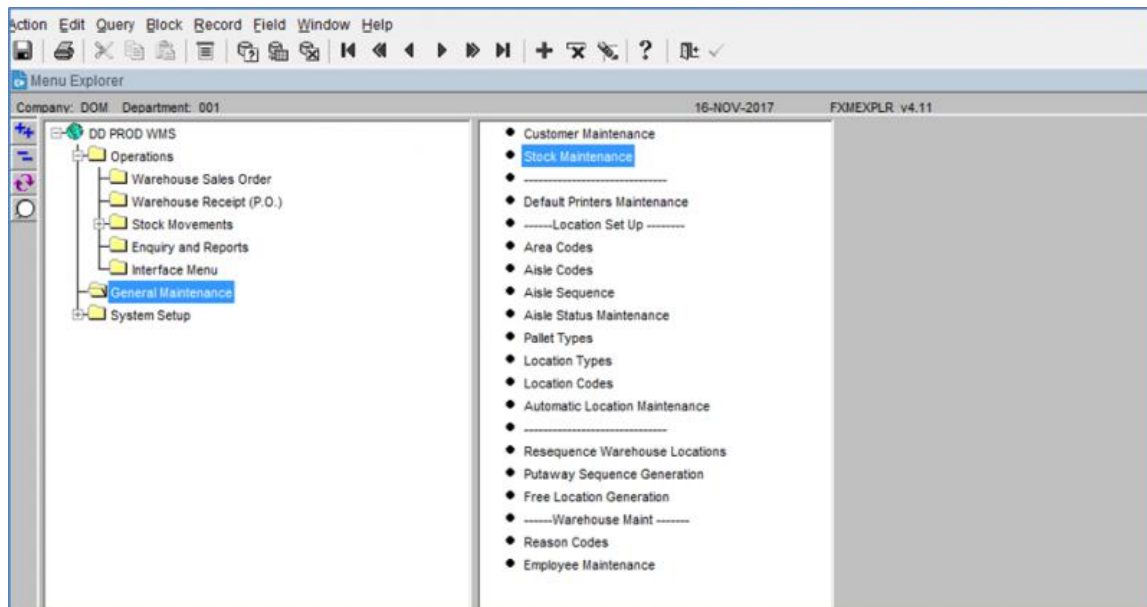
1 Stock Code Copy.....1

1 Stock Code Copy

On occasion new SKU codes will require creating on the WMS.

The client will notify by email the codes which require setting up on the WMS.

Menu Access - Operations -> General Maintenance -> Stock Maintenance



Access the Stock Maintenance screen on the WMS.

Open the screen and find the first existing record, then select the Copy Item button. (Bottom left on the screen).



Stock Maintenance

Company: DOM Department: 001 16-NOV-2017 STKSTOC01B v4.79

From Owner: CBF 001
From Stock Code: ALAS-MD-1
Description: Headboard and Footboard
Size:

To Owner: CBF 001
To Stock Code: TEST-CODE-A-1
Description: Rais
Size:

Confirm Copy Cancel

Within the Copy Screen, enter the ?To Stock Code? as advised by the client, and then enter the Description.

Note: the stock code must be entered exactly as advised by the client.

Stock Maintenance

Company: DOM Department: 001 16-NOV-2017 STKSTOC01B v4.79

From Owner: CBF 001
From Stock Code: ALAS-MD-1
Description: Headboard and Footboard
Size:

To Owner: CBF 001
To Stock Code: TEST-CODE-A-1
Description: Rais
Size:

Confirm Copy Cancel

Information
FWL-17841: Stock code copied successfully.
OK

Once the details have been entered then select the ?Confirm Copy? button.



Stock Maintenance

Company: DOM Department: 001 16-NOV-2017 STKSTOC01B v4.79

Owner: CBF 001 Childrens Bedroom Furniture
 Stock Code: TEST-CODE-A-1 Description: Rails Size:

Main Further Stock Physical Attributes Accounting Product Sampling Client Spe... Code Refe... Serial Nu... Stock War... Bond Pick/Disp... Supplier Stock UOMS Standard

Product Range 1 Product Class 01 Product Category 01 Product Group 01 Prod Sub Group

Range Class Category Group

Unit Of Measure 1 CARTON Factor CARTON To CARTON 1 Sales Kit No
 Unit Of Measure 2 CARTON Factor CARTON To PALLET 9,999 Convert Units No
 Unit Of Measure 3 PALLET Factor CARTON To PALLET 9,999 Product Status Active
 Stocking Unit Of Measure CARTON Factor CARTON To Transf 0 Net Weight 30,000 KGM
 Gross Weight 30,000 KGM

Product Type A All Product Types
 Tax Code 0 Standard
 Normal Supplier CBF 001 Childrens Bedroom Furniture
 Country of Origin GB Great Britain
 Bonded Yes No

Pallet Type DBL Double Pallet Space
 ABC Code 1
 EAN Code
 Auditing Yes No

Copy Item Notes Send RF Data

Find the new Stock Code

Key Fields to amend:

Factor Carton to Pallet - Change from 9,999 to the number of cartons to be stored on a pallet, if known

Net Weight & Gross Weight - Enter weight as advised by CBF

Pallet Type - this will determine how many spaces a pallet of this stock will occupy, and is used for charging purposes.

- STD - 1 pallet space Euro
- DBL - 2 pallet space
- TPL - 3 pallet space



Stock Maintenance

Company: DOM Department: 001 16-NOV-2017 STKSTOC01B v4.79

Owner: CBF 001 Childrens Bedroom Furniture
 Stock Code: TEST-CODE-A-1 Description: Rails Size:

Main Further Stock Physical Attributes Accounting Product Sampling Client Spe... Code Refe... Serial Nu... Stock War... Bond Pick/Disp... Supplier... Stock UOMS Standard ...

Minimum Tolerance 0
 Maximum Tolerance 0
 Low Tolerance 0
 High Tolerance 0
 No. of Cases/Layer 1
 Capacity Weight KGM

Carton Length 1 CM
 Carton Width 1 CM
 Carton Depth 1 CM
 Volume 0.000 MTQ
 Layers per pallet 9.999
 Pallet Equivalent: 1.00

Copy Item Notes Send RF Data

Physical Attributes Tab

If the dimensions have been provided, then they can be entered in this screen.

