

# **ULF0030 System Registry**

Aptean Ltd  
Copyright © 2011-2025.

# Contents

1 ULF0030 System Registry.....1

1.1 Company Setup.....1

# 1 ULF0030 System Registry

This is the system registry maintenance screen.

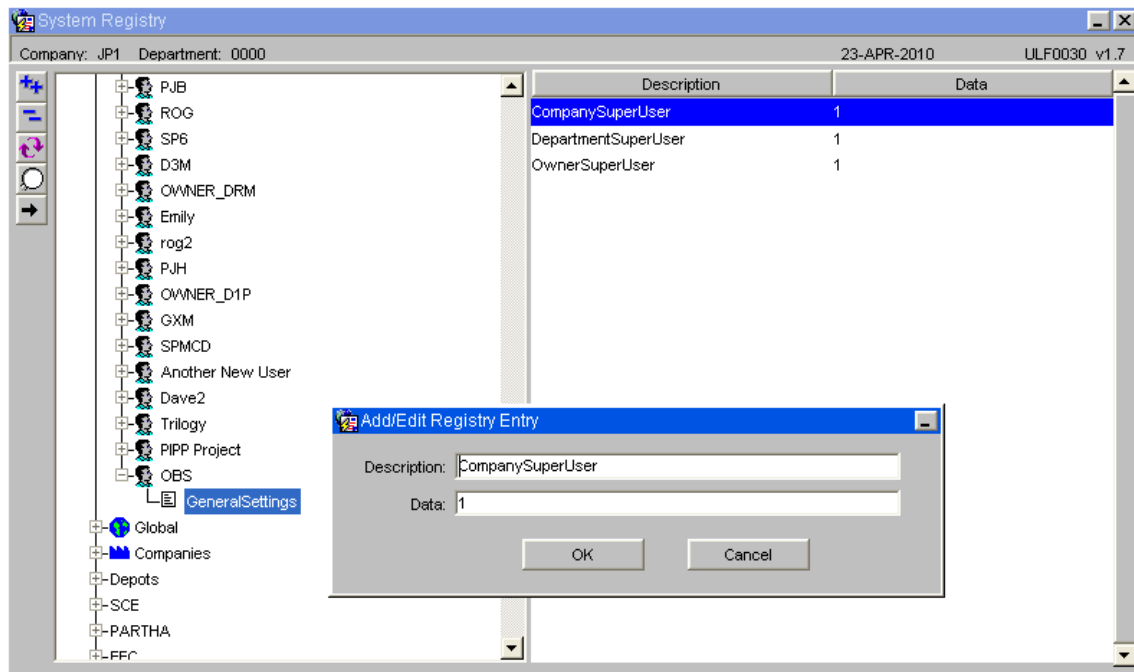
**Warning:** This is a dangerous system administration screen and should be supplied ONLY to system administrators.

The screen allows you to set up configuration for many elements, such as users, depots, etc.

Some use cases are covered below

## 1.1 Company Setup

In order to create a company, you must be given the authority to do so.

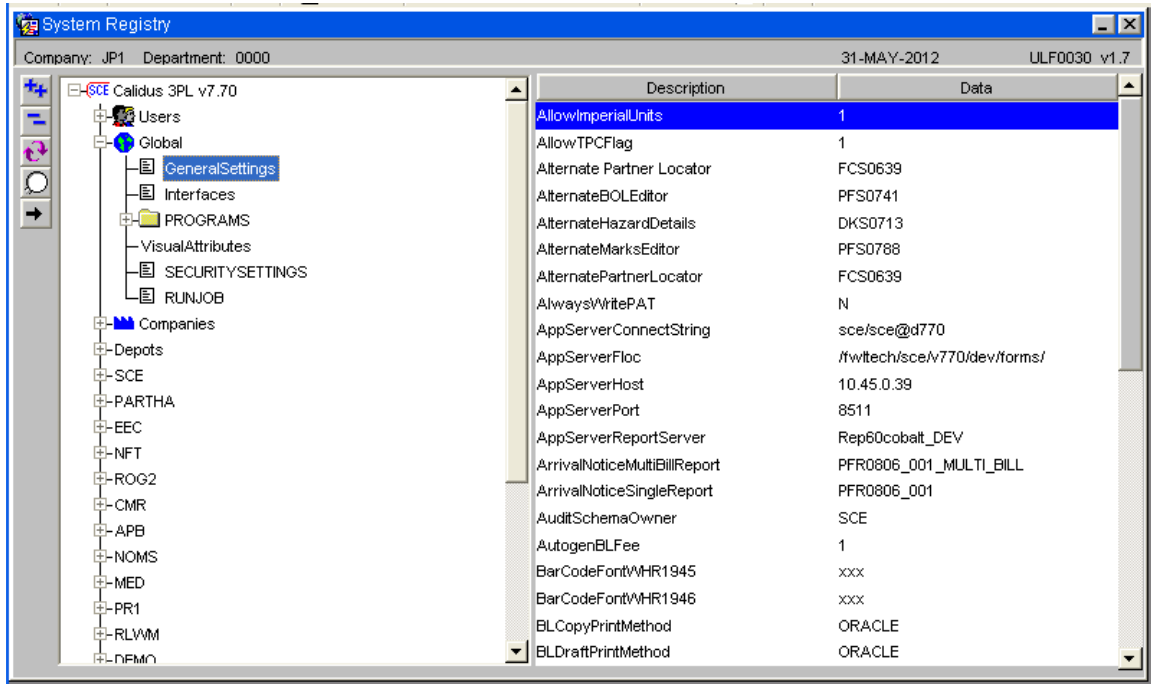


In system registry, against your user id, move the cursor to the right hand side of the browser and click on the '+' icon. This will show you the box below. Enter the text exactly as shown (without spaces.)

In order to create a department (required) you also need to take the same steps, but entering a description of DepartmentSuperUser and a data value of 1.

In addition to setting up the user account to allow the company to be created, a system registry setting must be set for units of measure.



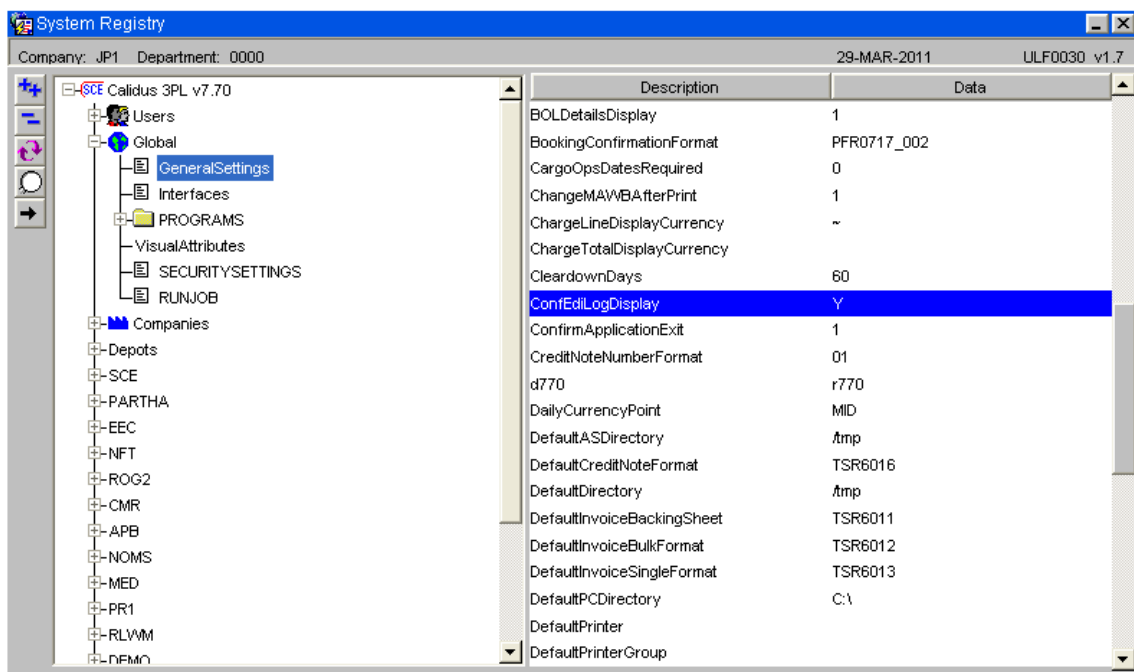


Ensure that the system registry value 'AllowImperialUnits' with a data value of '1' is set at either Company level (this may require a new Company data node to be added to the menu or enter at the Global level).

**Note:** If the value is not set then there is the possibility that inbound EDI messages mail fail to upload.

### 1.1.1 EDI Setup

To produce log files to aid error resolution and to display tracking information within the XF Monitor Tracking page the following system registry setting must be entered at a Global Level '**ConfEdiLogDisplay**' with a value of '**Y**'



For a list of configurable EDI Messages see - [Configurable EDI Inbound Messages](#)



### 1.1.2 Serial Numbers

For any discrepancies between serial numbers entered at Pre-Advice and Goods Receipt Confirmation require a password to authorise any changes.

