

WHS0175

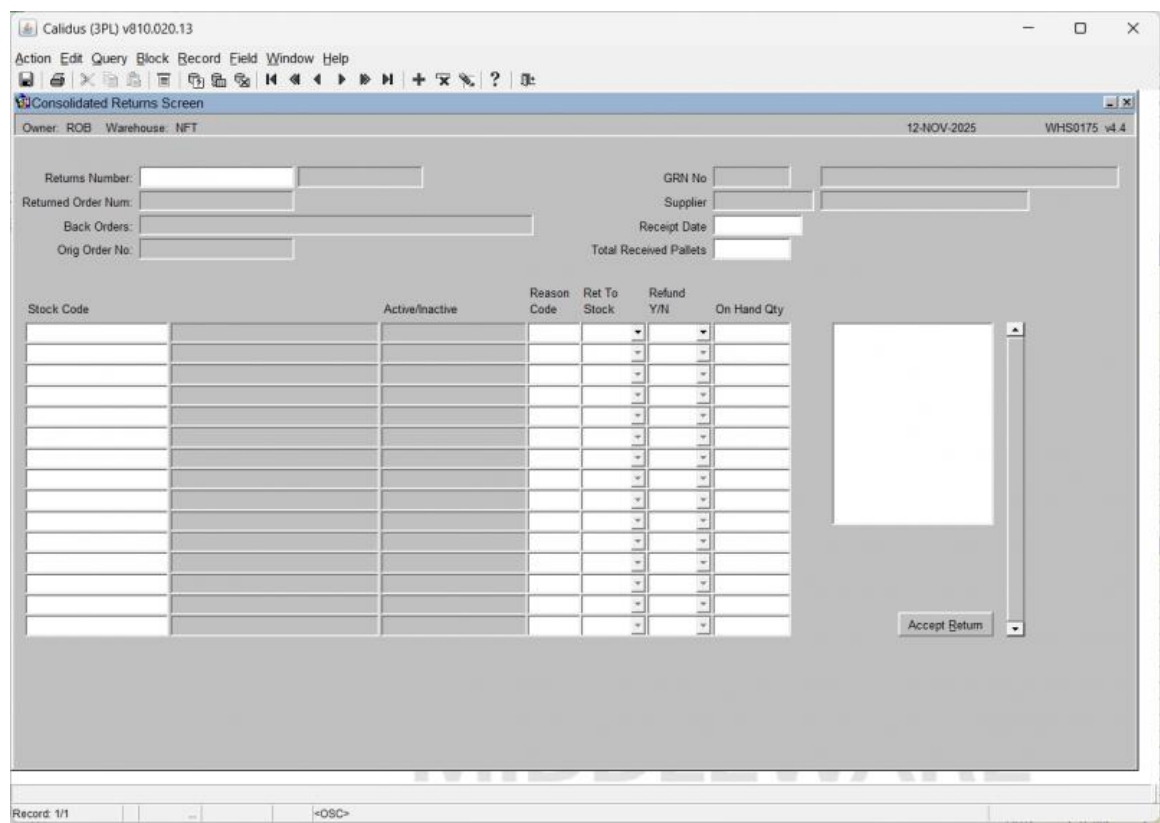
Aptean Ltd
Copyright © 2011-2025.

Contents

1 WHS0175.....1

1 WHS0175

This is the Consolidated Returns Screen (WHS0175).



The following fields document the primary return parameters:

Field Name	Description
Returns Number	The unique identifier for the return transaction. Once you enter
Returned Order Num	The number of the sales order from which the goods are being returned.
Orig Order No	The original sales order number.
GRN No	The Goods Received Note number associated with the return processing.
Supplier	The unique identifier for the supplier.
Receipt Date	The date the goods were received for the return.
Total Received Pallets	The total number of pallets received for the return.
Back Orders	(Input field description is not visible/applicable as a column or standalone field).

The following data columns are displayed in the returns detail grid:

Column Name	Description
Stock Code	The unique identifier for the returned product.
Active/Inactive	Status indicating if the stock code is active or inactive.
Reason Code	A dropdown menu to select the reason for the return.
Ret To Stock	A dropdown menu to specify if the returned item should go back to stock.
Refund Y/N	A field indicating whether a refund is applicable for the returned item (Yes/No).
On Hand Qty	The quantity of this stock code currently held on hand.

Action Buttons:

- **Accept Return:** Processes and confirms the return transaction details.

