

WHS0547 Stock Take Cleardown

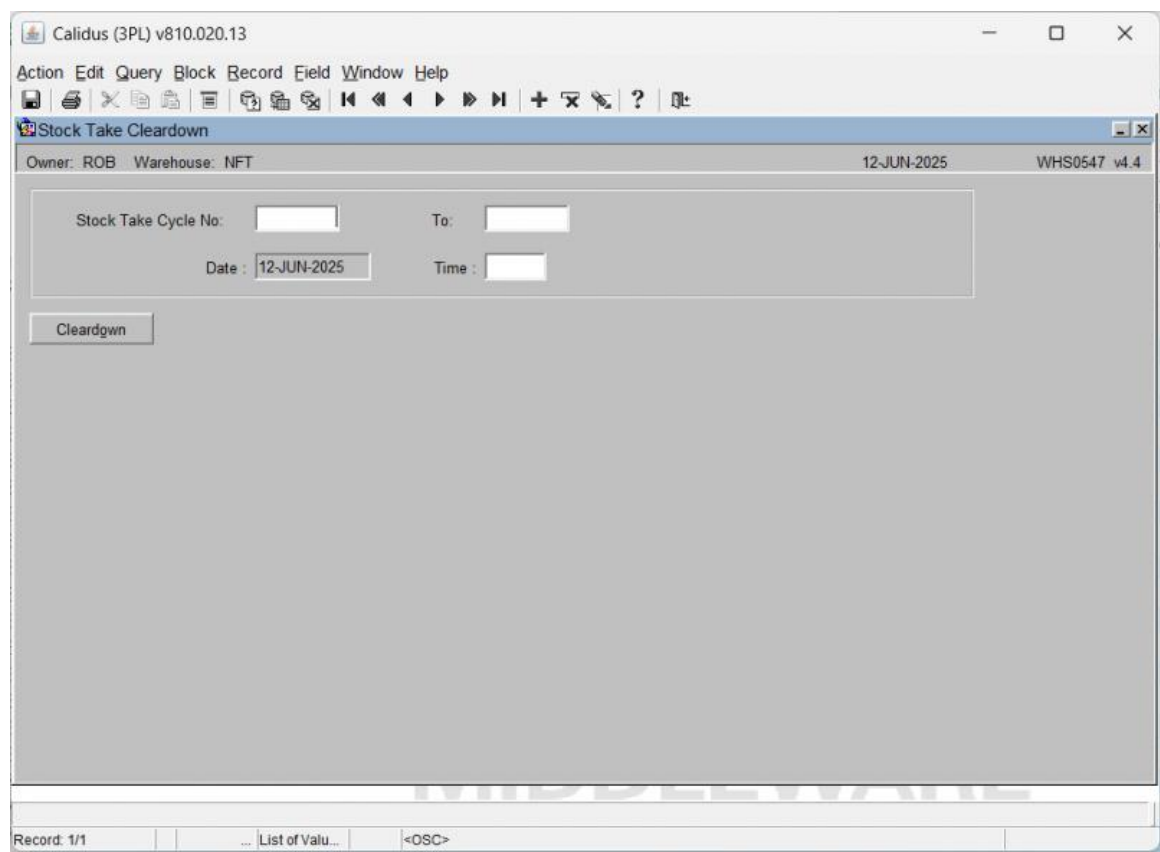
Aptean Ltd
Copyright © 2011-2026.

Contents


1 WHS0547 Stock Take Cleardown.....1

1 WHS0547 Stock Take Cleardown

The stock take Cleardown is completed after the stock take cycle has been updated.



Field Name	Description	Options
Stock Take Cycle No/To	The range of stock take cycle numbers to be cleared down	Must be a valid cycle - LOV available - note, the status of each cycle will be displayed
Run Date	Date that the update is run.	Must be a valid date - will default to today
Time	Time that the update is run.	Must be a valid time HH:MM
Buttons		
Cleardown	Initiates the stock take Cleardown.	

 **Note:** The Cleardown can be done on a range of Stock Take Cycles. Entry of the number of the highest cycle that is not at status pending, and all cycles at status rejected, confirmed and cannot complete will be deleted. Any cycles at status pending will be unaffected by the Cleardown.

