

WHS3050 Stock Check Report

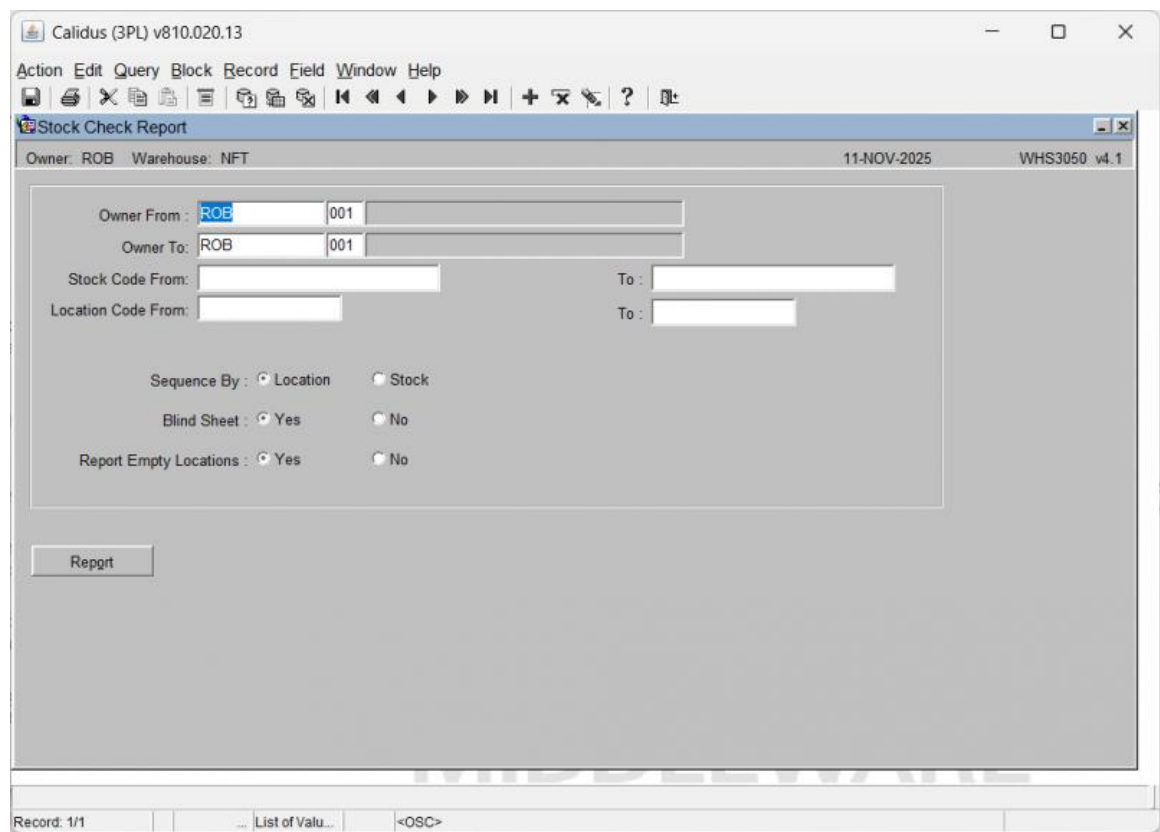
Aptean Ltd
Copyright © 2011-2026.

Contents

1 WHS3050 Stock Check Report.....1

1 WHS3050 Stock Check Report

This is the *Stock Check Report* screen (*WHS3050*).



The following fields document the report parameters:

Field Name	Description
Owner From	The starting identifier for the owner of the stock.
Owner To	The ending identifier for the owner of the stock.
Stock Code From	The starting stock code for the report range.
To	The ending stock code for the report range.
Location Code From	The starting location code for the report range.
To	The ending location code for the report range.
Sequence By	Radio buttons to select the primary sort order: <i>Location</i> or <i>Stock</i> .
Blind Sheet	Radio button selection (Yes/No) to indicate if the report should be generated as a blind stock take sheet.
Report Empty Locations	Radio button selection (Yes/No) to determine if locations with zero stock should be included in the report.
Action Buttons:	

- **Report:** Executes the generation and display of the Stock Check Report.

