

# **WHS7920 Warehouse RDT Status Maintenance**

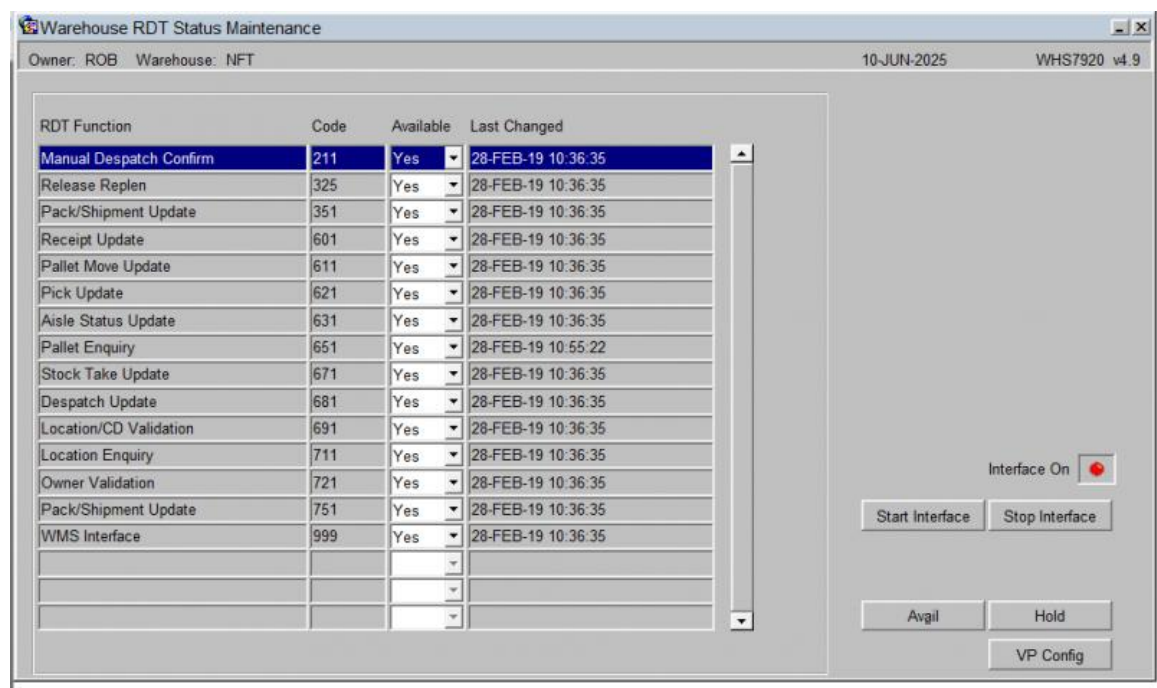
Aptean Ltd  
Copyright © 2011-2026.

# Contents

1 WHS7920 Warehouse RDT Status Maintenance.....1

# 1 WHS7920 Warehouse RDT Status Maintenance

This screen is the major control screen for RDTs in *CALIDUS* WMS.



Each line controls not only the running of the update process in *CALIDUS* WMS, but also the availability of the functions to standard *CALIDUS* WMS processing. So, for example, if the Pallet Receipt Update availability flag is 'Y', you have the ability to send receipt preadvice messages to WCS. If it is 'N', you can't send those messages.

The use of the availability flags in the system will be explained for each sending process described in the next section.

Use **Start Interface** to start the RF interface programs.

Use **Stop Interface** to stop the RF interface programs.

The light below these buttons indicates whether the interface is on or off.

**Note:** The use of this screen should be limited to System Administrators only.

