

# **WHS8110 Outstanding Charges Report**

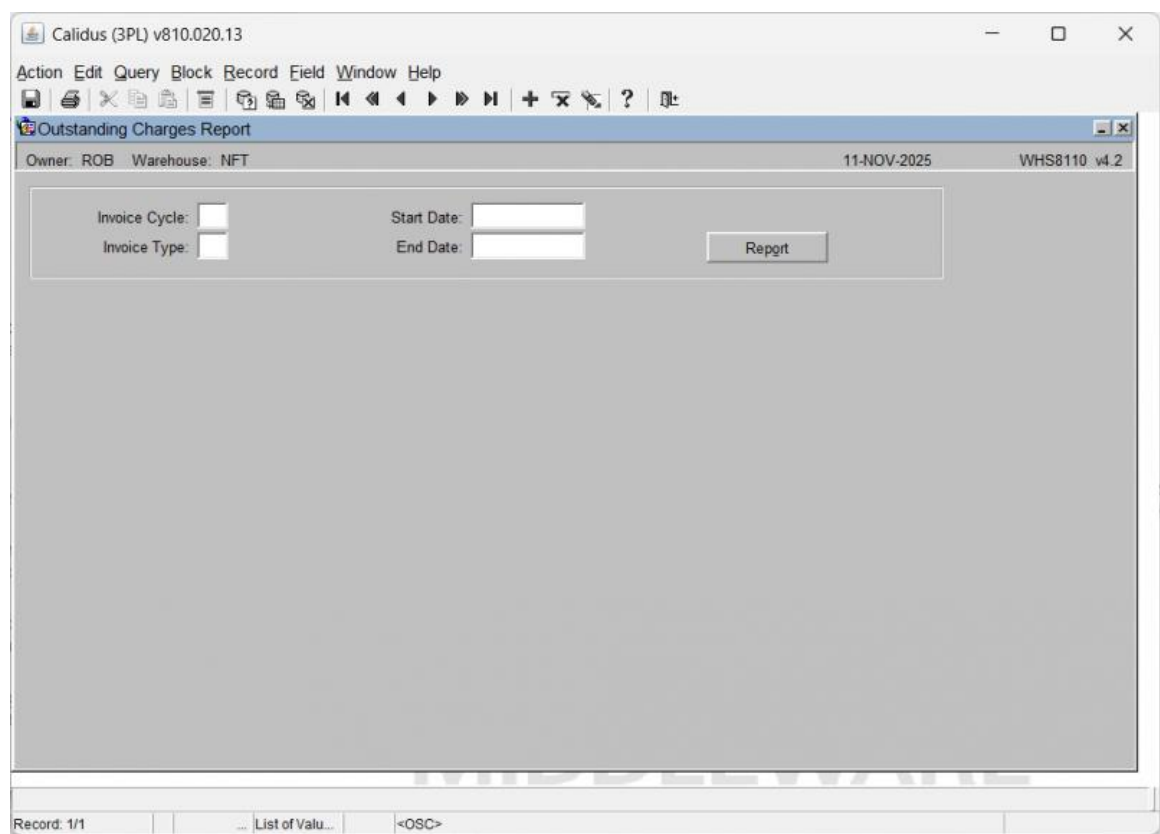
Aptean Ltd  
Copyright © 2011-2026.

Contents

1 WHS8110 Outstanding Charges Report.....1

# 1 WHS8110 Outstanding Charges Report

This is the *Outstanding Charges Report* screen (*WHS8110*).



The following fields document the report parameters:

Field Name	Description
Invoice Cycle	The identifier for the billing cycle to include in the report.
Invoice Type	The type or category of invoice to report on.
Start Date	The calendar start date for the report range.
End Date	The calendar end date for the report range.
Action Buttons:	

- **Report:** Executes the generation and display of the Outstanding Charges Report.

