

WHS8160

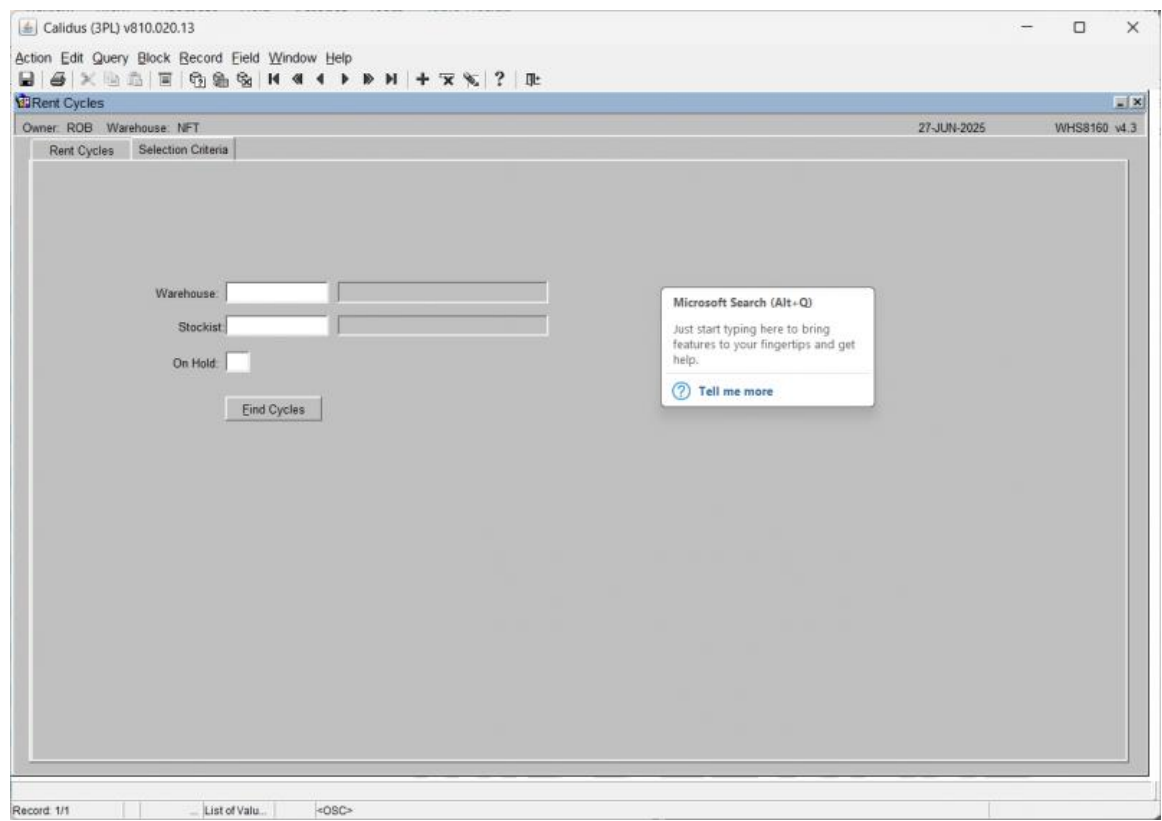
Aptean Ltd
Copyright © 2011-2025.

Contents

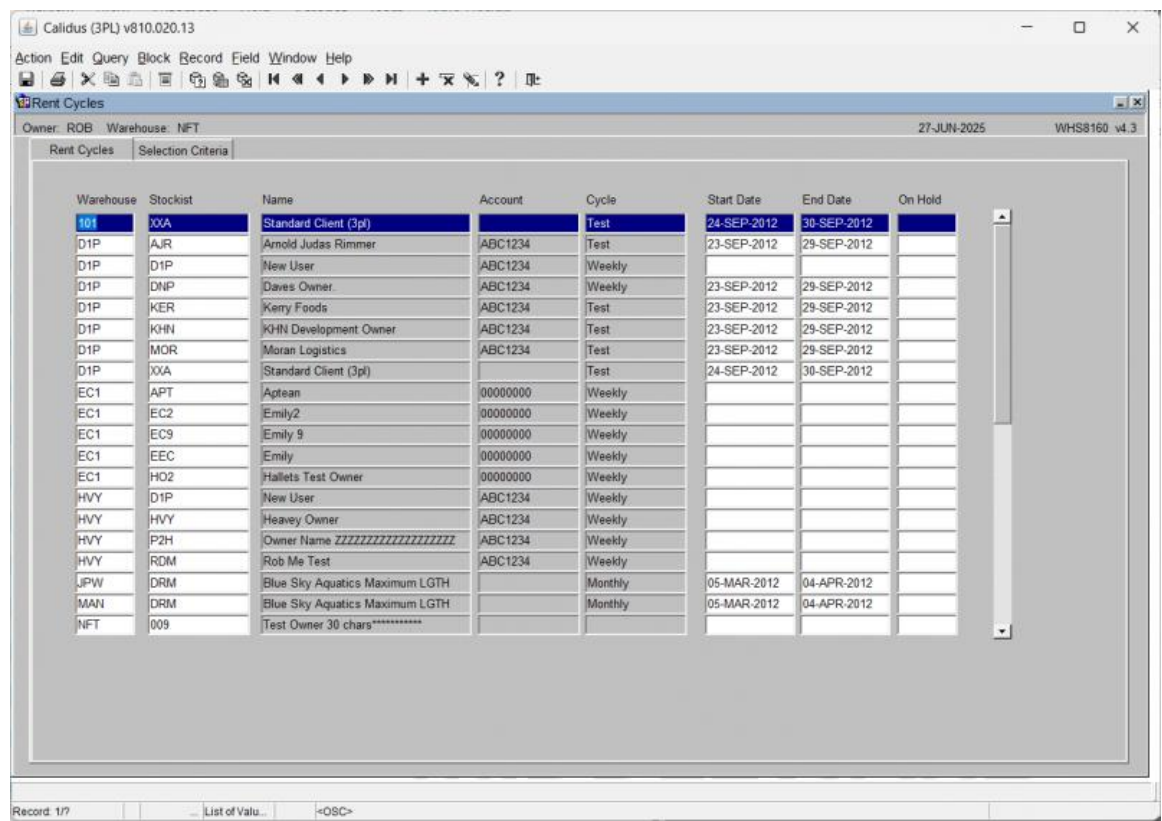
1 WHS8160.....1

1 WHS8160

The rent cycle screen allows the user to setup the start and end rent cycle for each warehouse and owner. The account and cycle information will be imported from the charging tab in the owner maintenance screen.



You start on the *Selection Criteria* tab, where you may find rent cycles by first optionally entering a warehouse, Stockist Code and On Hold indicator. When you click **Find Cycles** the screen will display the results on the *Rent Cycles* tab.



The screen displays the following, which you may amend or enter:

- *Warehouse* - an LOV is provided
- *Stockist* - the owner. An LOV is provided.
- *Name* - name of stockist
- *Account* - display only
- *Cycle* - display only
- *Start Date* - the start of the rent cycle
- *End Date* - the end of the rent cycle
- *On Hold* - whether this cycle is on hold.

