

WHSORA130 Inventory Movement Report

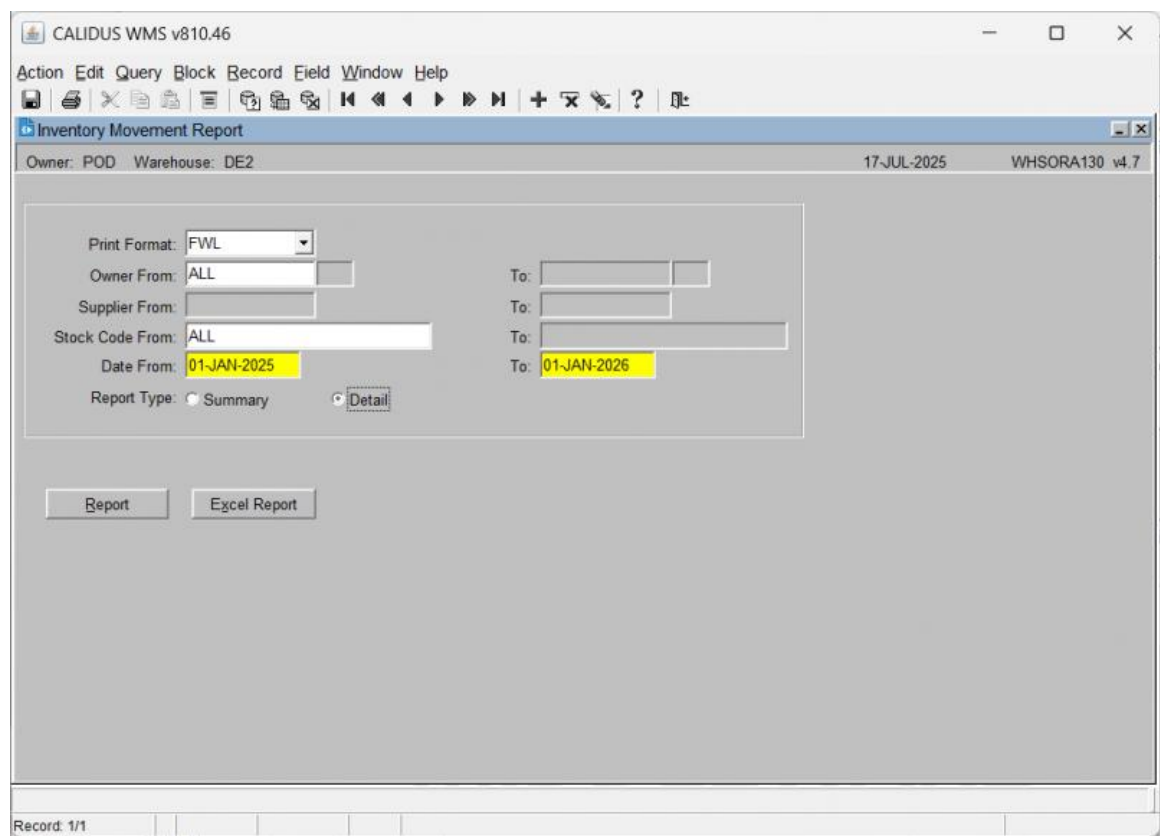
Aptean Ltd
Copyright © 2011-2026.

Contents

1 WHSORA130 Inventory Movement Report.....1

1 WHSORA130 Inventory Movement Report

This is the Inventory Movement Report (WHSORA130) screen.



Generating an Inventory Movement Report:

The screen displays the following input fields:

- *Print Format*: A dropdown list for selecting the report's print format. The available options are *FWL*, *AVO*, *CLA*, and *ELY*. An LOV is provided.
- *Owner From/To*: Input fields for entering a range of owner codes.
- *Supplier From/To*: Input fields for entering a range of supplier codes.
- *Stock Code From/To*: Input fields for entering a range of stock codes.
- *Date From/To*: Input fields for entering a range of dates.
- *Report Type*: A radio button group with options *Summary* and *Detail* to determine the level of detail in the report.

There are also buttons:

- **Report**
- **Excel Report**

When details are entered, click the **Report** button, which will start Inventory Movement Report generation. If this is a report, this will ask you how you would like to print the report through the standard screen. More details on this process can be found in the guide [Printing From the WMS](#).

When you click the **Excel Report** button, the inventory movement data will be exported to a spreadsheet and served up to your browser.

